

Contact

Post:

REPUBLIC OF SINGAPORE
AERONAUTICAL
INFORMATION SERVICES
CIVIL AVIATION AUTHORITY
OF SINGAPORE
SINGAPORE CHANGI
AIRPORT
P.O. BOX 1, SINGAPORE
918141

Tel: (65) 6595 6051

AFS: WSSSYNYX

Fax: (65) 64410221

Email: caas_singaporeais@caas.gov.sgURL: www.caas.gov.sgURL: <https://fpl-1.caasaim.gov.sg>

AIP Supplement for Singapore



**AIP SUP
069/2018**

Effective from 13 NOV 2018

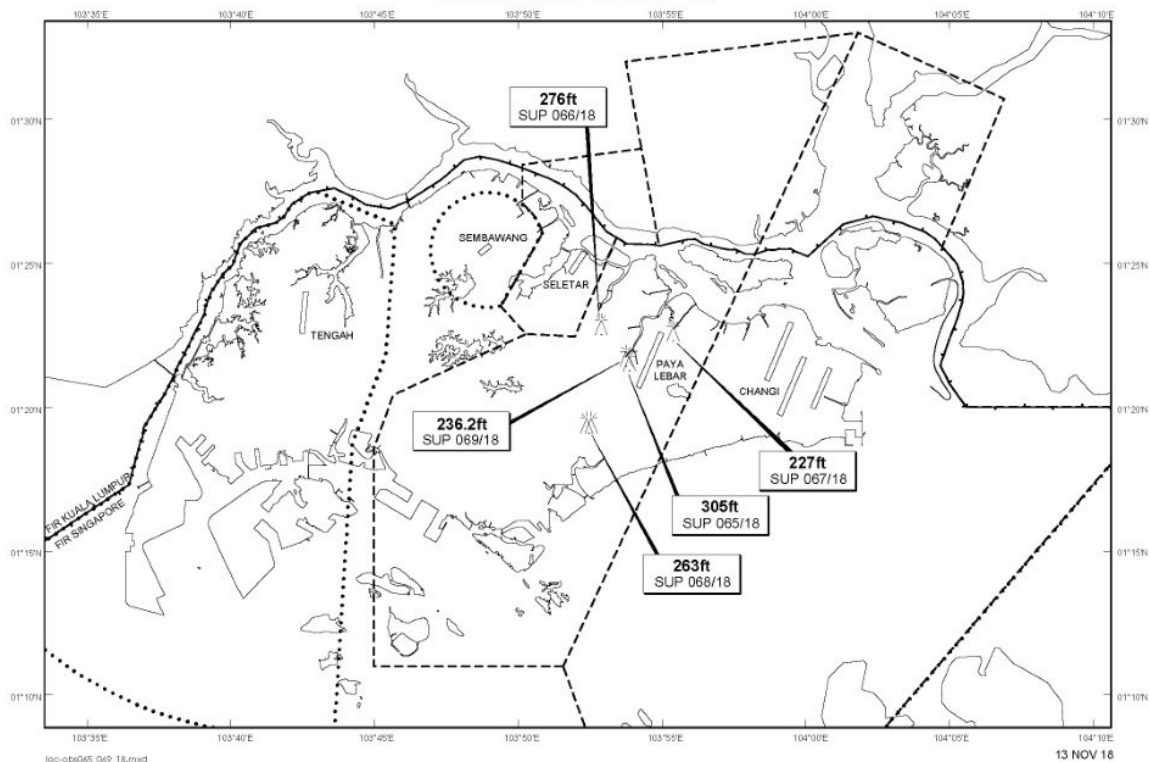
/ 10 MAY 2020

Published on 13 NOV 2018

PAYA LEBAR AIRPORT – MOBILE CRANE

WIE/2005101559 one mobile crane, height 236.2ft AMSL, erected at 012147N 1035345E (bearing 316.4 degrees, distance 0.6nm from Paya Lebar ARP - within Paya Lebar Control Zone). Mobile crane marked and lighted at night. (NOTAM A4270/18 dated 30/10/18 is hereby superseded.)

LOCATION OF OBSTACLES



PAGE INTENTIONALLY LEFT BLANK