

**Contact**

Post:

REPUBLIC OF SINGAPORE  
AERONAUTICAL  
INFORMATION SERVICES  
CIVIL AVIATION AUTHORITY  
OF SINGAPORE  
SINGAPORE CHANGI  
AIRPORT  
P.O. BOX 1, SINGAPORE  
918141

Tel: (65) 6595 6051

AFS: WSSSYNYX

Fax: (65) 64410221

Email: [caas\\_singaporeais@caas.gov.sg](mailto:caas_singaporeais@caas.gov.sg)URL: [www.caas.gov.sg](http://www.caas.gov.sg)URL: <https://fpl-1.caasaim.gov.sg>

## AIP Supplement for Singapore



**AIP SUP  
070/2018**

**Effective from 13 NOV 2018**

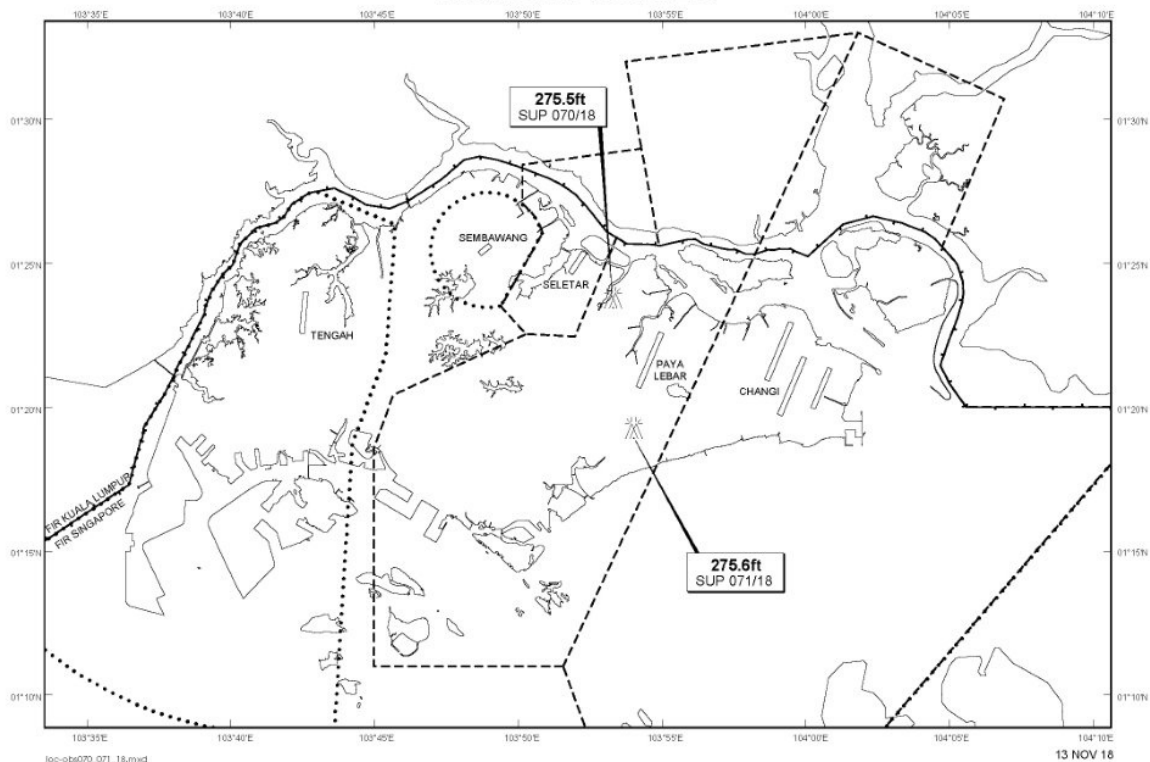
**/ 31 DEC 2020**

**Published on 13 NOV 2018**

### PAYA LEBAR AIRPORT – LUFFER CRANES AND FLAT TOP CRANES

WIE/2012311559 two luffer cranes and three flat top cranes, height 275.5ft AMSL, erected at 012348N 1035318E (bearing 340.6 degrees, distance 2.6nm from Paya Lebar ARP - within Paya Lebar Control Zone). Luffer cranes and flat top cranes marked and lighted at night. (NOTAM A4253/18 dated 29/10/18 is hereby superseded.)

#### LOCATION OF OBSTACLES



*PAGE INTENTIONALLY LEFT BLANK*