

Contact

Post:

REPUBLIC OF SINGAPORE
AERONAUTICAL
INFORMATION SERVICES
CIVIL AVIATION AUTHORITY
OF SINGAPORE
SINGAPORE CHANGI
AIRPORT
P.O. BOX 1, SINGAPORE
918141

Tel: (65) 6595 6051

AFS: WSSSYNYX

Fax: (65) 64410221

Email: caas_singaporeais@caas.gov.sgURL: www.caas.gov.sgURL: <https://fpl-1.caasaim.gov.sg>

AIP Supplement for Singapore



**AIP SUP
071/2018**

Effective from 13 NOV 2018

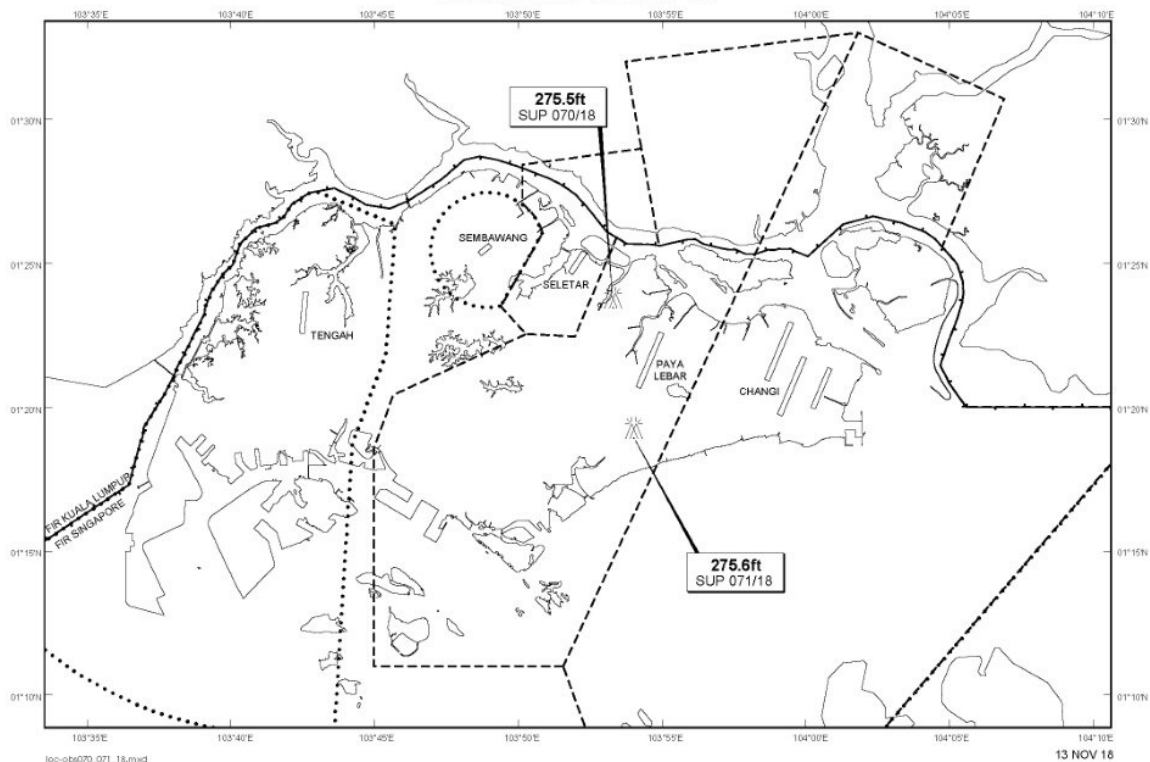
/ 31 DEC 2023

Published on 13 NOV 2018

PAYA LEBAR AIRPORT – SADDLE CRANES

WIE/2312311559 seven saddle cranes, height 275.6ft AMSL, erected at 011916N 1035401E (bearing 184.1 degrees, distance 2.1nm from Paya Lebar ARP - within Paya Lebar Control Zone). Saddle cranes marked and lighted at night. (NOTAM A3736/18 dated 25/09/18 is hereby superseded.)

LOCATION OF OBSTACLES



PAGE INTENTIONALLY LEFT BLANK