

Contact

Post:

REPUBLIC OF SINGAPORE
AERONAUTICAL
INFORMATION SERVICES
CIVIL AVIATION AUTHORITY
OF SINGAPORE
SINGAPORE CHANGI
AIRPORT
P.O. BOX 1, SINGAPORE
918141

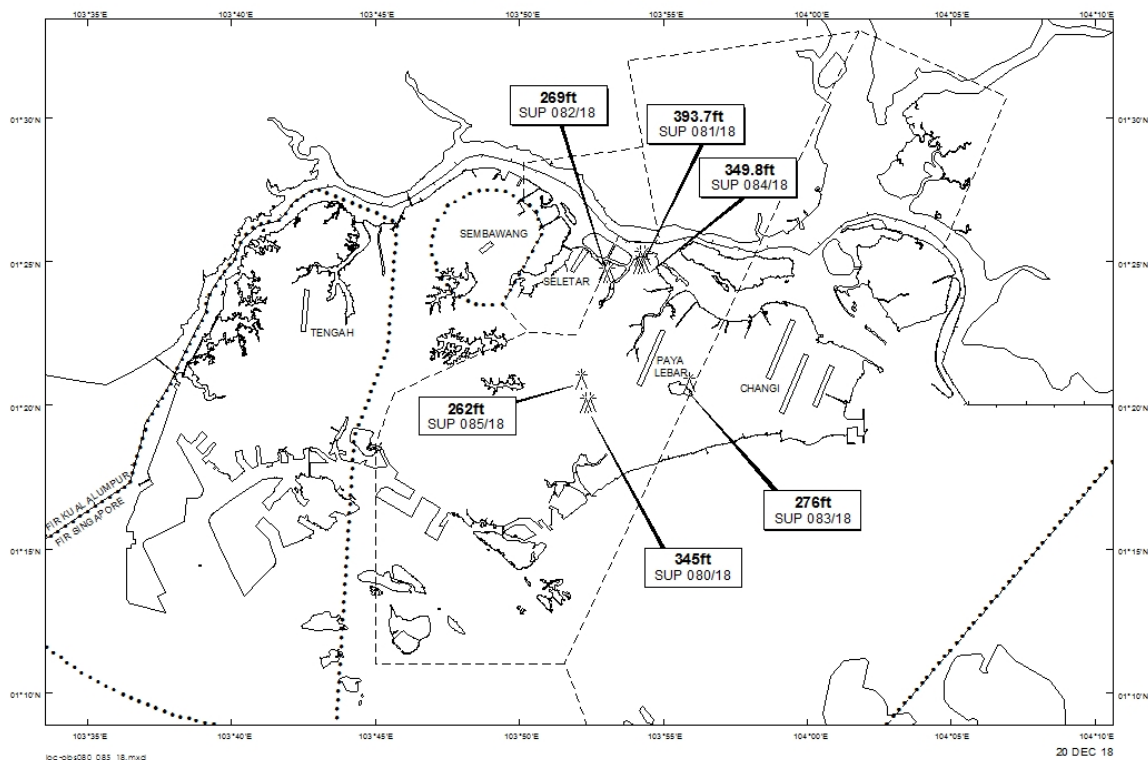
Tel: (65) 6595 6051

AFS: WSSSYNYX

Fax: (65) 64410221

Email: caas_singaporeais@caas.gov.sgURL: www.caas.gov.sgURL: <https://fpl-1.caasaim.gov.sg>**AIP Supplement for
Singapore****AIP SUP
082/2018****Effective from 20 DEC 2018****/ 30 AUG 2019****Published on 20 DEC 2018****PAYA LEBAR AIRPORT – CRAWLER CRANES**

WIE/1908301559 three crawler cranes, height 269ft AMSL, erected at 012435N 1035303E (bearing 333.1 degrees, distance 2.5nm from Paya Lebar ARP - within Paya Lebar Control Zone). Crawler cranes marked and lighted at night. (NOTAM A4825/18 dated 03/12/18 is hereby superseded.)

LOCATION OF OBSTACLES

PAGE INTENTIONALLY LEFT BLANK