

Contact

Post:

REPUBLIC OF SINGAPORE
AERONAUTICAL
INFORMATION SERVICES
CIVIL AVIATION AUTHORITY
OF SINGAPORE
SINGAPORE CHANGI
AIRPORT
P.O. BOX 1, SINGAPORE
918141

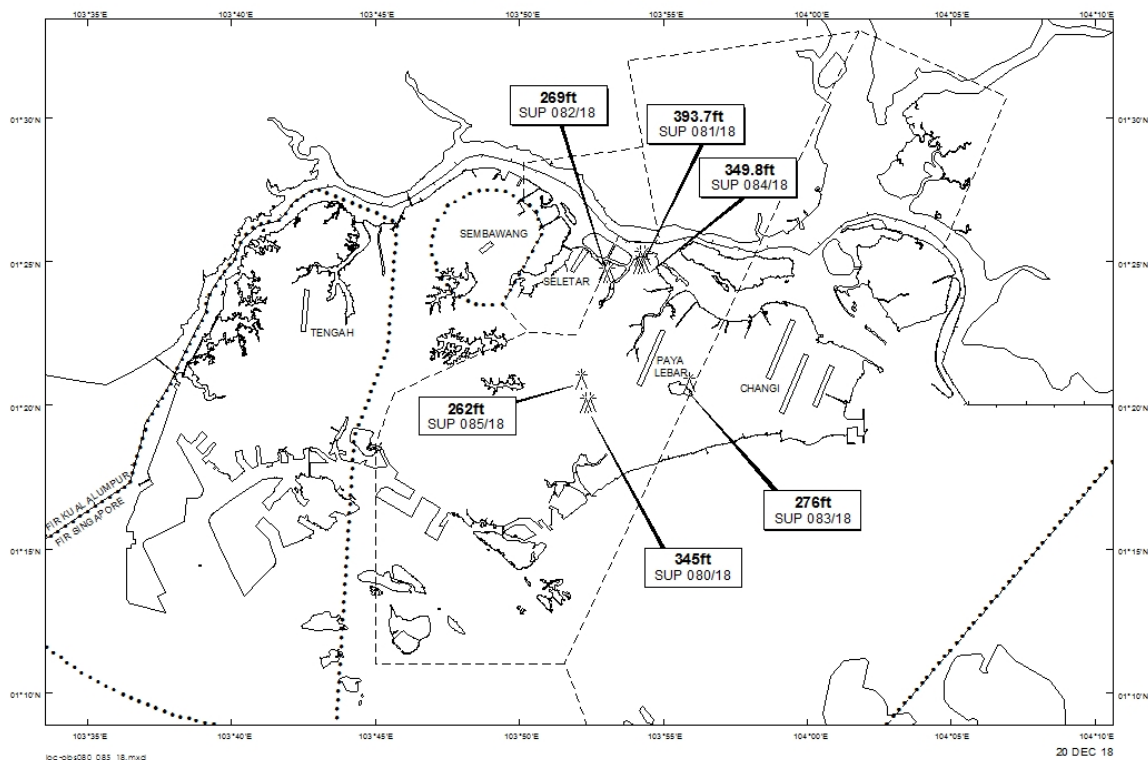
Tel: (65) 6595 6051

AFS: WSSSYNYX

Fax: (65) 64410221

Email: caas_singaporeais@caas.gov.sgURL: www.caas.gov.sgURL: <https://fpl-1.caasaim.gov.sg>**AIP Supplement for
Singapore****AIP SUP
084/2018****Effective from 30 DEC 2018****/ 30 SEP 2019****Published on 20 DEC 2018****PAYA LEBAR AIRPORT – HAMMERHEAD CRANES**

Between 1812301600/1909301559 ten hammerhead cranes, height 349.8ft AMSL, erected at 012455N 1035415E (bearing 1.3 degrees, distance 3.6nm from Paya Lebar ARP - within Paya Lebar Control Zone). Hammerhead cranes marked and lighted at night. (NOTAM A4991/18 dated 18/12/18 is hereby superseded.)

LOCATION OF OBSTACLES

PAGE INTENTIONALLY LEFT BLANK