

Contact

Post:

REPUBLIC OF SINGAPORE
AERONAUTICAL
INFORMATION SERVICES
CIVIL AVIATION AUTHORITY
OF SINGAPORE
SINGAPORE CHANGI
AIRPORT
P.O. BOX 1, SINGAPORE
918141

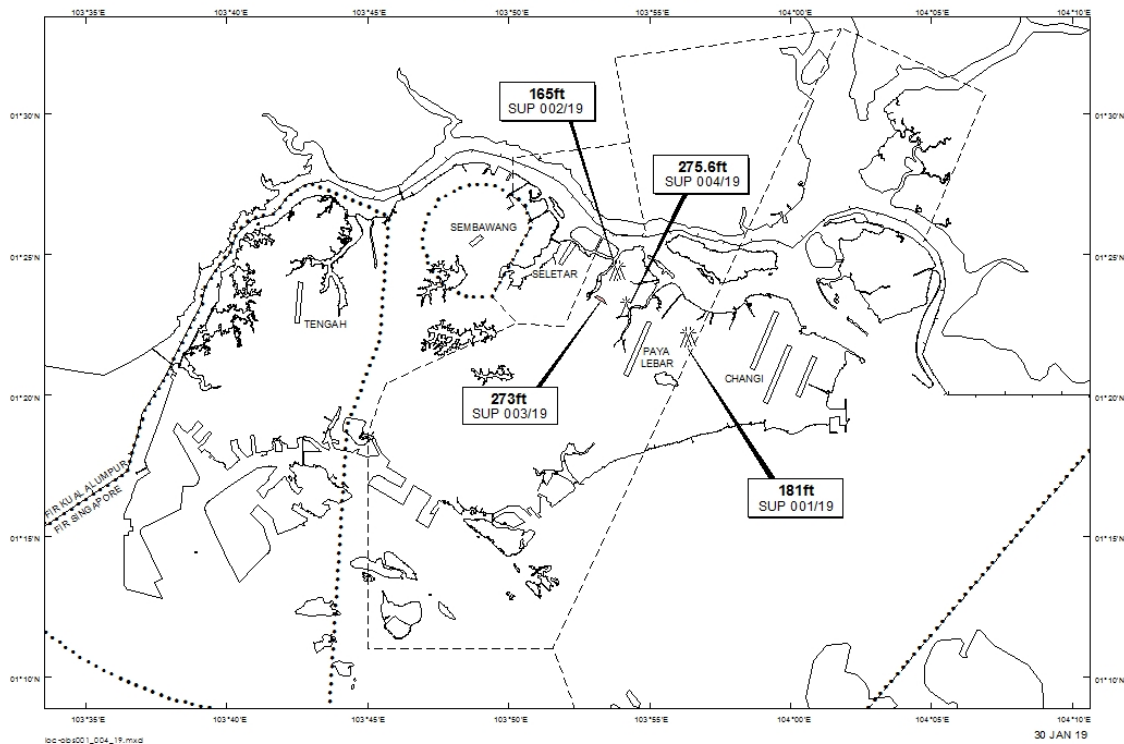
Tel: (65) 6595 6051

AFS: WSSSYNYX

Fax: (65) 64410221

Email: caas_singaporeais@caas.gov.sgURL: www.caas.gov.sgURL: <https://fpl-1.caasaim.gov.sg>**AIP Supplement for
Singapore****AIP SUP
004/2019****Effective from 30 JAN 2019****/ 30 NOV 2019****Published on 30 JAN 2019****PAYA LEBAR AIRPORT – LUFFER CRANE**

WIE/1911301559 one luffer crane, height 275.6ft AMSL, erected at 012307N 1035409E (bearing 359.2 degrees, distance 1.8nm from Paya Lebar ARP - within Paya Lebar Control Zone). Luffer crane marked and lighted at night. (NOTAM A0013/19 dated 02/01/19 is hereby superseded.)

LOCATION OF OBSTACLES

PAGE INTENTIONALLY LEFT BLANK