

**Contact**

Post:

REPUBLIC OF SINGAPORE  
AERONAUTICAL  
INFORMATION SERVICES  
CIVIL AVIATION AUTHORITY  
OF SINGAPORE  
SINGAPORE CHANGI  
AIRPORT  
P.O. BOX 1, SINGAPORE  
918141

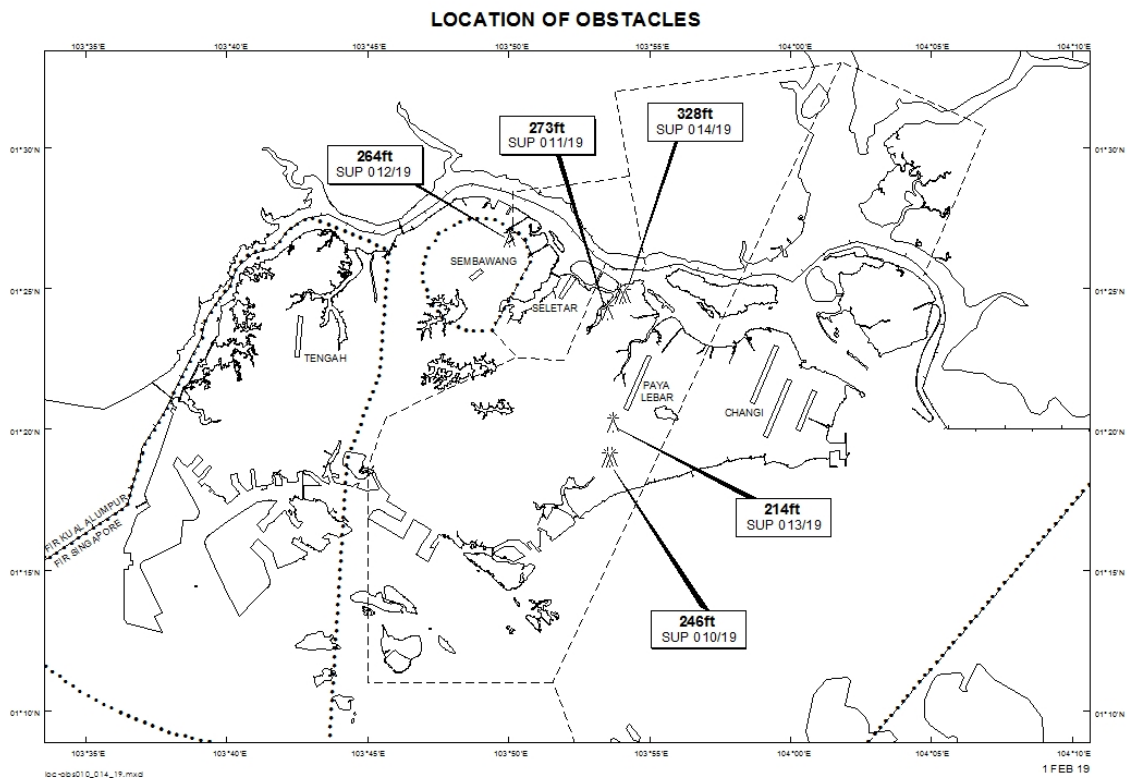
Tel: (65) 6595 6051

AFS: WSSSYNYX

Fax: (65) 64410221

Email: [caas\\_singaporeais@caas.gov.sg](mailto:caas_singaporeais@caas.gov.sg)URL: [www.caas.gov.sg](http://www.caas.gov.sg)URL: <https://fpl-1.caasaim.gov.sg>**AIP Supplement for  
Singapore****AIP SUP  
010/2019****Effective from 01 FEB 2019****/ 15 APR 2019****Published on 01 FEB 2019****PAYA LEBAR AIRPORT – CRAWLER CRANES**

WIE/1904151559 two crawler cranes, height 246ft AMSL, erected at 011859N 1035335E (bearing 194.0 degrees, distance 2.43nm from Paya Lebar ARP – within Paya Lebar Control Zone). Crawler cranes marked and lighted at night. (NOTAM A5024/18 dated 19/12/18 is hereby superseded.)



*PAGE INTENTIONALLY LEFT BLANK*