

Contact

Post:

REPUBLIC OF SINGAPORE
AERONAUTICAL
INFORMATION SERVICES
CIVIL AVIATION AUTHORITY
OF SINGAPORE
SINGAPORE CHANGI
AIRPORT
P.O. BOX 1, SINGAPORE
918141

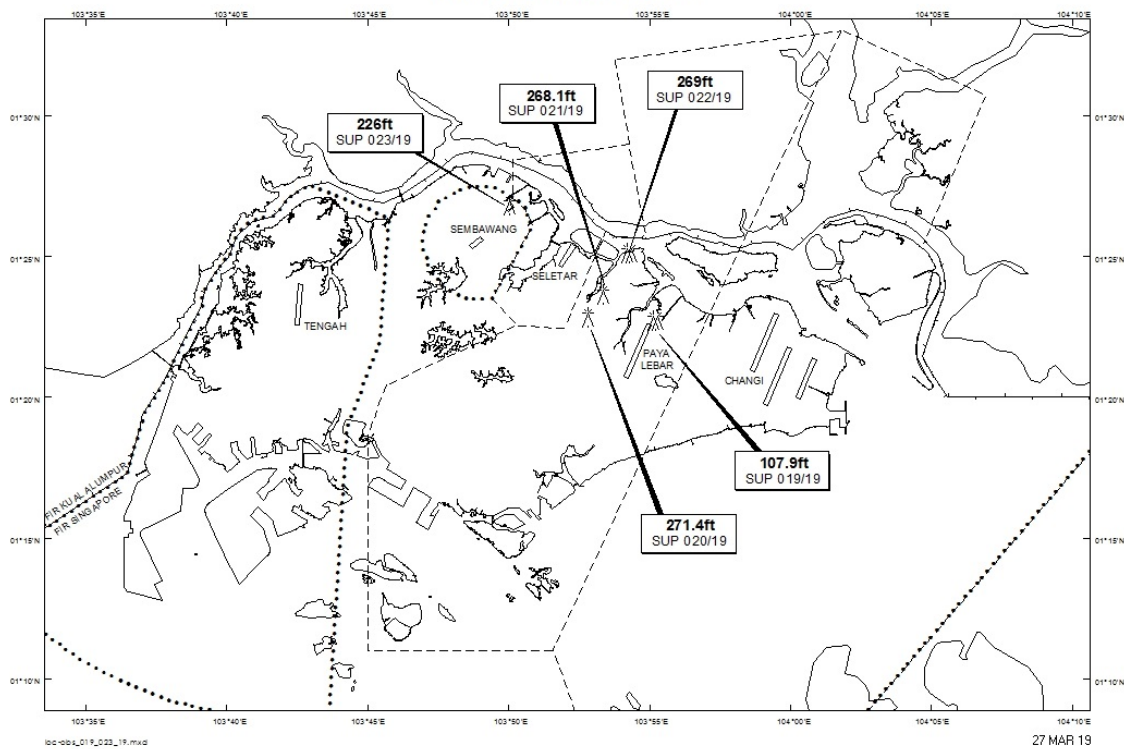
Tel: (65) 6595 6051

AFS: WSSSYNYX

Fax: (65) 64410221

Email: caas_singaporeais@caas.gov.sgURL: www.caas.gov.sgURL: <https://fpl-1.caasaim.gov.sg>**AIP Supplement for
Singapore****AIP SUP
023/2019****Effective from 27 MAR 2019****/ 01 NOV 2019****Published on 27 MAR 2019****SEMBAWANG AERODROME – MOBILE CRANE**

WIE/1911011559 one mobile crane, height 226ft AMSL, erected at 012647N 1035002E (bearing 63 degrees, distance 2.4nm from Sembawang ARP – within Sembawang Aerodrome Traffic Zone). Mobile crane marked and lighted at night. (NOTAM A0853/19 dated 07/03/19 is hereby superseded.)

LOCATION OF OBSTACLES

PAGE INTENTIONALLY LEFT BLANK