

Contact

Post:

REPUBLIC OF SINGAPORE
AERONAUTICAL
INFORMATION SERVICES
CIVIL AVIATION AUTHORITY
OF SINGAPORE
SINGAPORE CHANGI
AIRPORT
P.O. BOX 1, SINGAPORE
918141

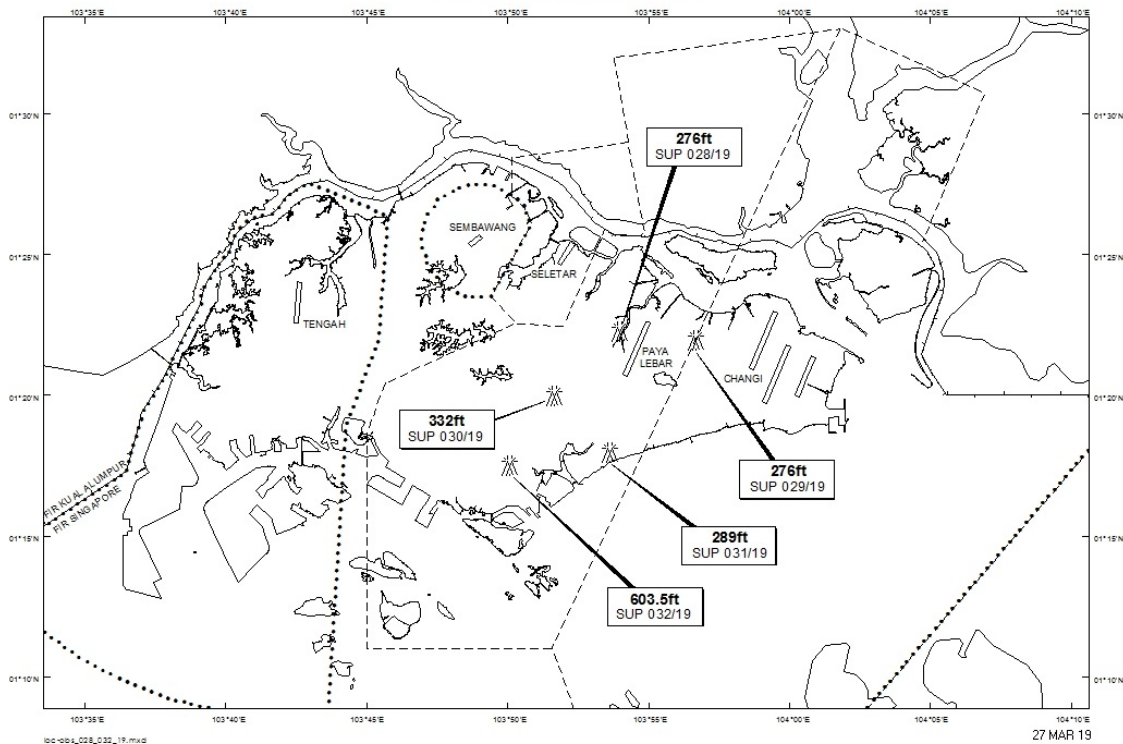
Tel: (65) 6595 6051

AFS: WSSSYNYX

Fax: (65) 64410221

Email: caas_singaporeais@caas.gov.sgURL: www.caas.gov.sgURL: <https://fpl-1.caasaim.gov.sg>**AIP Supplement for
Singapore****AIP SUP****031/2019****Effective from 27 MAR 2019****/ 28 JAN 2022****Published on 27 MAR 2019****PAYA LEBAR AIRPORT – LUFFER CRANES**

WIE/2201282359 two luffer cranes, height 289ft AMSL, erected at 011756N 1035337E (bearing 189.1 degrees, distance 3.5nm from Paya Lebar ARP – within Paya Lebar Control Zone). Luffer cranes marked and lighted at night. (NOTAM A0417/19 dated 02/02/19 is hereby superseded.)

LOCATION OF OBSTACLES

PAGE INTENTIONALLY LEFT BLANK