

Contact

Post:

REPUBLIC OF SINGAPORE
AERONAUTICAL
INFORMATION SERVICES
CIVIL AVIATION AUTHORITY
OF SINGAPORE
SINGAPORE CHANGI
AIRPORT
P.O. BOX 1, SINGAPORE
918141

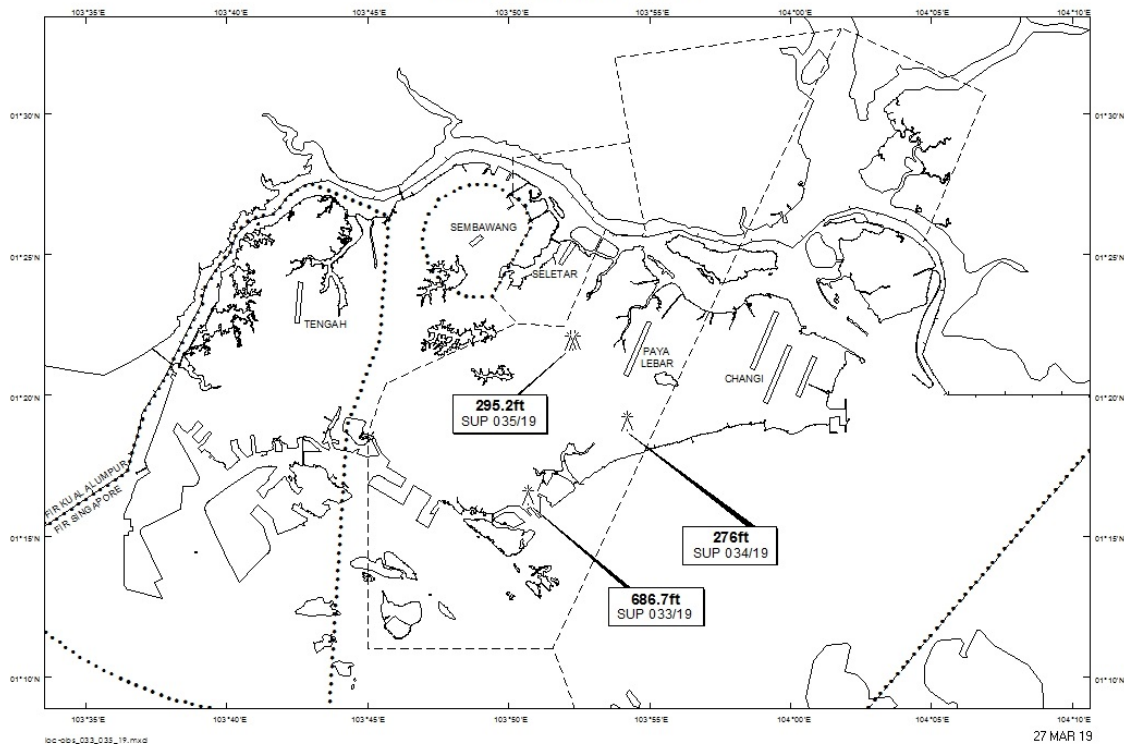
Tel: (65) 6595 6051

AFS: WSSSYNYX

Fax: (65) 64410221

Email: caas_singaporeais@caas.gov.sgURL: www.caas.gov.sgURL: <https://fpl-1.caasaim.gov.sg>**AIP Supplement for
Singapore****AIP SUP
033/2019****Effective from 27 MAR 2019****/ 31 DEC 2022****Published on 27 MAR 2019****PAYA LEBAR AIRPORT – LUFFER CRANE**

WIE/2212311559 one luffer crane, height 686.7ft AMSL, erected at 011626N 1035041E (bearing 215.4 degrees, distance 6nm from Paya Lebar ARP – within Paya Lebar Control Zone). Luffer crane marked and lighted at night. (NOTAM A0594/19 dated 19/02/19 is hereby superseded.)

LOCATION OF OBSTACLES

PAGE INTENTIONALLY LEFT BLANK