

Contact

Post:

REPUBLIC OF SINGAPORE
AERONAUTICAL
INFORMATION SERVICES
CIVIL AVIATION AUTHORITY
OF SINGAPORE
SINGAPORE CHANGI
AIRPORT
P.O. BOX 1, SINGAPORE
918141

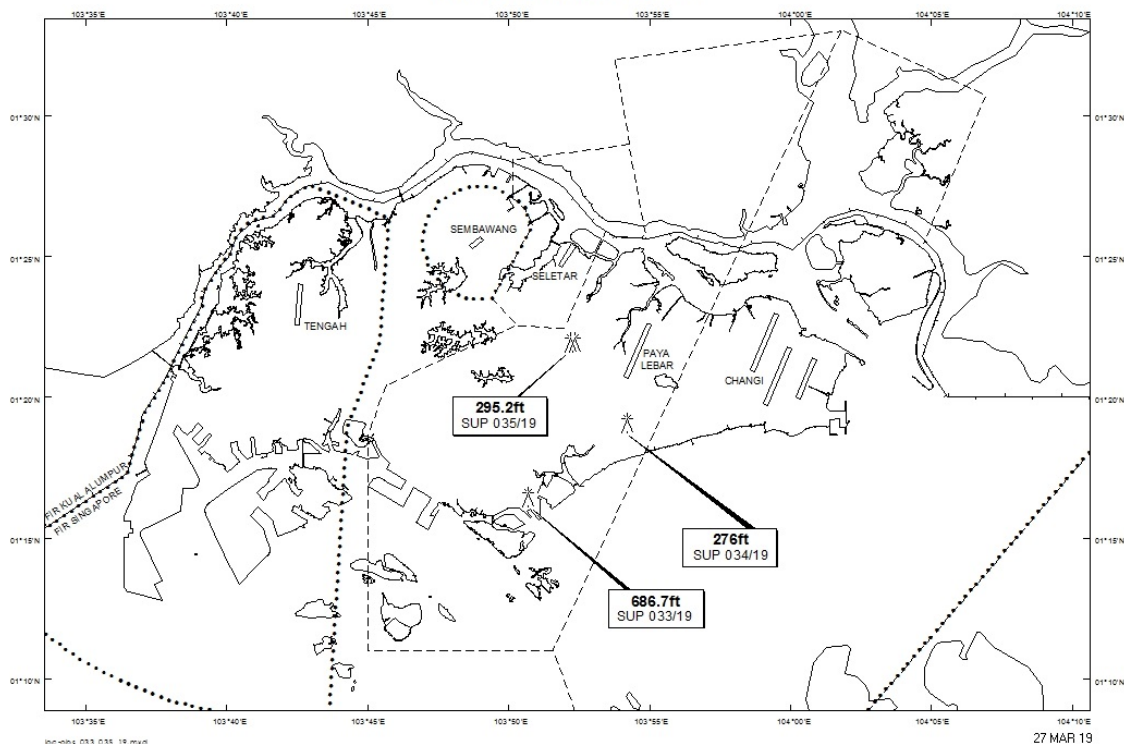
Tel: (65) 6595 6051

AFS: WSSSYNYX

Fax: (65) 64410221

Email: caas_singaporeais@caas.gov.sgURL: www.caas.gov.sgURL: <https://fpl-1.caasaim.gov.sg>**AIP Supplement for
Singapore****AIP SUP
034/2019****Effective from 27 MAR 2019****/ 31 DEC 2022****Published on 27 MAR 2019****PAYA LEBAR AIRPORT – SADDLE CRANES**

WIE/2212311559 six saddle cranes, height 276ft AMSL, erected at 011905N 1035411E (bearing 179.6 degrees, distance 2.3nm from Paya Lebar ARP – within Paya Lebar Control Zone). Saddle cranes marked and lighted at night. (NOTAM A0667/19 dated 22/02/19 is hereby superseded.)

LOCATION OF OBSTACLES

PAGE INTENTIONALLY LEFT BLANK