

Contact

Post:

REPUBLIC OF SINGAPORE
AERONAUTICAL
INFORMATION SERVICES
CIVIL AVIATION AUTHORITY
OF SINGAPORE
SINGAPORE CHANGI
AIRPORT
P.O. BOX 1, SINGAPORE
918141

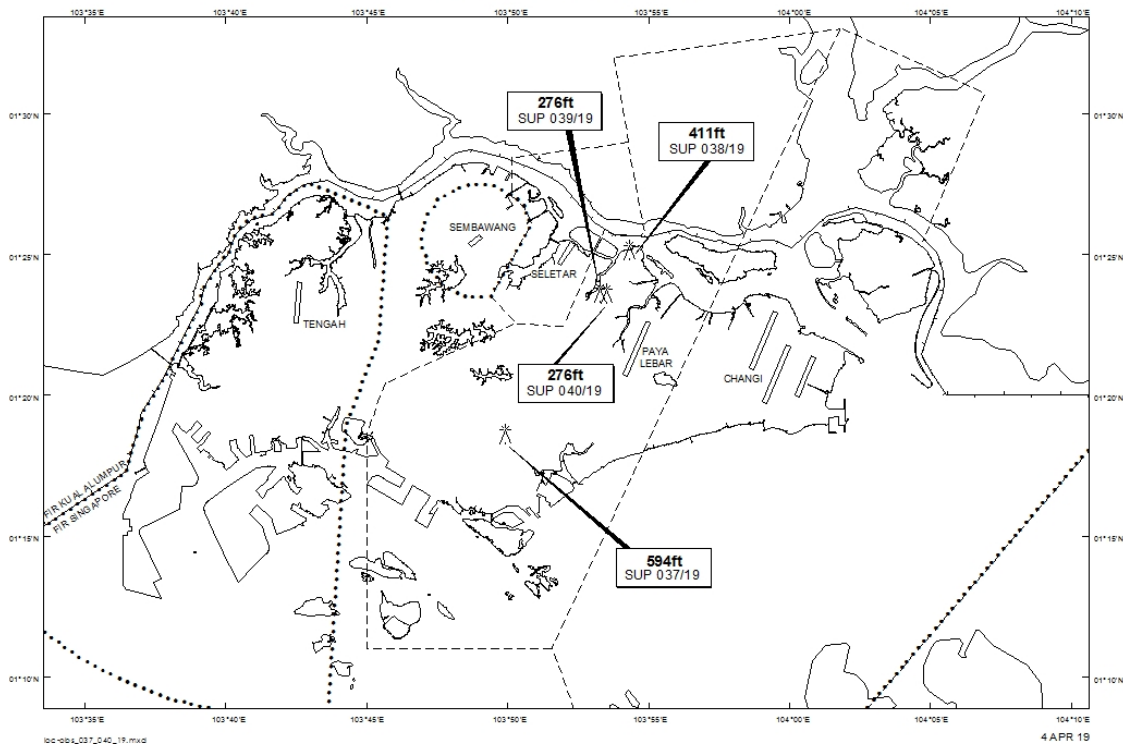
Tel: (65) 6595 6051

AFS: WSSSYNYX

Fax: (65) 64410221

Email: caas_singaporeais@caas.gov.sgURL: www.caas.gov.sgURL: <https://fpl-1.caasaim.gov.sg>**AIP Supplement for
Singapore****AIP SUP
038/2019****Effective from 04 APR 2019****/ 07 SEP 2019****Published on 04 APR 2019****PAYA LEBAR AIRPORT – MOBILE CRANE**

WIE/1909071559 one mobile crane, height 411ft AMSL, erected at 012509N 1035419E (bearing 2.1 degrees, distance 3.8nm from Paya Lebar ARP – within Paya Lebar Control Zone). Mobile crane marked and lighted at night. (NOTAM A0899/19 dated 12/03/19 is hereby superseded.)

LOCATION OF OBSTACLES

PAGE INTENTIONALLY LEFT BLANK