

**Contact**

Post:

REPUBLIC OF SINGAPORE  
AERONAUTICAL  
INFORMATION SERVICES  
CIVIL AVIATION AUTHORITY  
OF SINGAPORE  
SINGAPORE CHANGI  
AIRPORT  
P.O. BOX 1, SINGAPORE  
918141

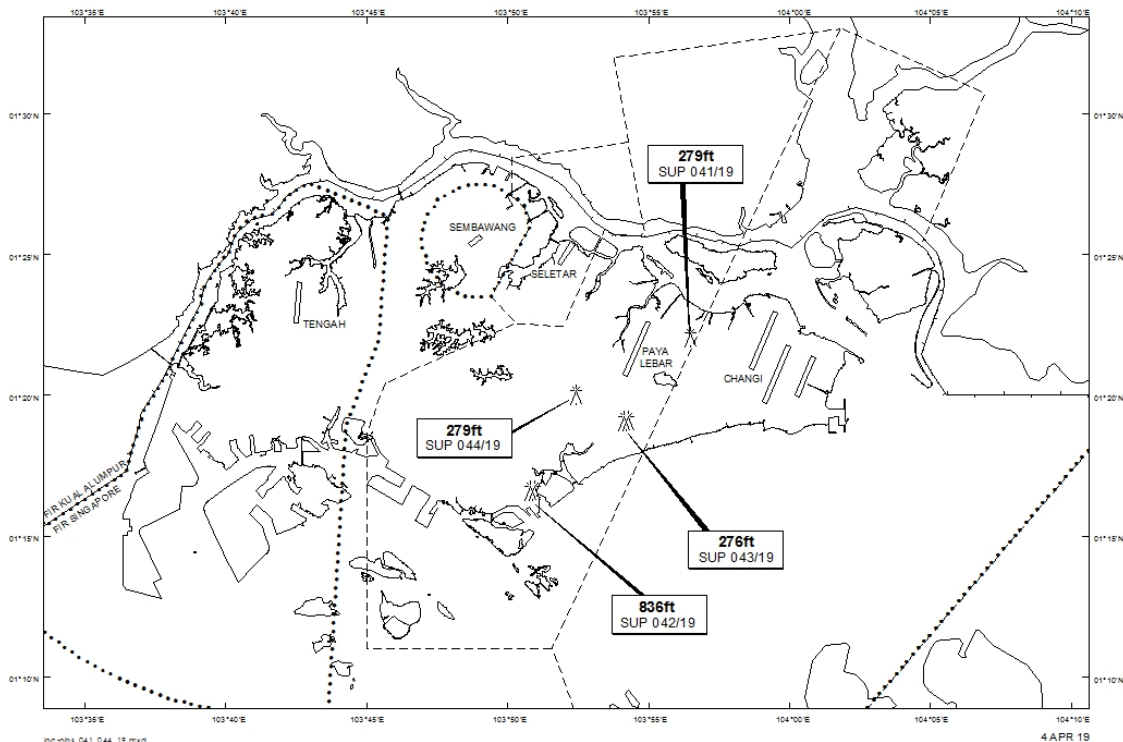
Tel: (65) 6595 6051

AFS: WSSSYNYX

Fax: (65) 64410221

Email: [caas\\_singaporeais@caas.gov.sg](mailto:caas_singaporeais@caas.gov.sg)URL: [www.caas.gov.sg](http://www.caas.gov.sg)URL: <https://fpl-1.caasaim.gov.sg>**AIP Supplement for  
Singapore****AIP SUP  
043/2019****Effective from 04 APR 2019****/ 31 DEC 2020****Published on 04 APR 2019****PAYA LEBAR AIRPORT – SADDLE CRANES**

WIE/2012311559 nine saddle cranes, height 276ft AMSL, erected at 011905N 1035411E (bearing 214.9 degrees, distance 5.8nm from Paya Lebar ARP – within Paya Lebar Control Zone). Saddle cranes marked and lighted at night. (NOTAM A1042/19 dated 21/03/19 is hereby superseded.)

**LOCATION OF OBSTACLES**

*PAGE INTENTIONALLY LEFT BLANK*