

**Contact**

Post:

REPUBLIC OF SINGAPORE  
AERONAUTICAL  
INFORMATION SERVICES  
CIVIL AVIATION AUTHORITY  
OF SINGAPORE  
SINGAPORE CHANGI  
AIRPORT  
P.O. BOX 1, SINGAPORE  
918141

Tel: (65) 6595 6051

AFS: WSSSYNYX

Fax: (65) 64410221

Email: [caas\\_singaporeais@caas.gov.sg](mailto:caas_singaporeais@caas.gov.sg)URL: [www.caas.gov.sg](http://www.caas.gov.sg)URL: <https://fpl-1.caasaim.gov.sg>**AIP Supplement for  
Singapore****AIP SUP****092/2017****Effective from 31 JAN 2018****/ 11 FEB 2018****Published on 07 SEP 2017****FLYING DISPLAYS IN CONJUNCTION WITH THE SINGAPORE AIRSHOW 2018  
EXHIBITION FROM WEDNESDAY 31 JANUARY TO SUNDAY 11 FEBRUARY  
2018****1 INTRODUCTION**

1.1 Flying displays will be conducted during the Singapore Airshow 2018 Exhibition from 06 to 11 February 2018. Prior to the Exhibition, practices and rehearsals will be conducted from 31 January to 05 February 2018.

1.2 During the periods of practices, rehearsals and flying displays, Singapore Changi Airport and the airspace around the airport will be closed to non-participating aircraft.

**2 RESTRICTIONS AND CLOSURES OF SINGAPORE CHANGI AIRPORT AND AIRSPACE**

2.1 The details of the periods of Singapore Changi Airport and airspace closures are shown in Annex A.

2.2 The airspace to be closed is bounded by the following coordinates:

012517N 1035814E, thence clockwise along the Singapore / Kuala Lumpur FIR boundary, 012017N 1040522E, 011707N 1035618E, 011835N 1035658E, thence anti-clockwise along the eastern coastline of Singapore, 012254N 1035707E and 012517N 1035814E.

2.3 The vertical limits of airspace closure is from Ground / Sea Level up to 10,000ft AMSL. Please refer to Annex B for the chart showing the area of the airspace closure.

2.4 It is anticipated that many flights will arrive at and depart from Singapore Changi Airport shortly before and after each airport and airspace closure period. To avoid the possibility of flights being delayed until after the airport and airspace are re-opened, aircraft operators are advised to plan their flights to arrive or depart Singapore Changi Airport well before the closure times.

2.5 For the last 15 minutes prior to the closures of Singapore Changi Airport, priority will be given to Changi arrivals to land on both runways.

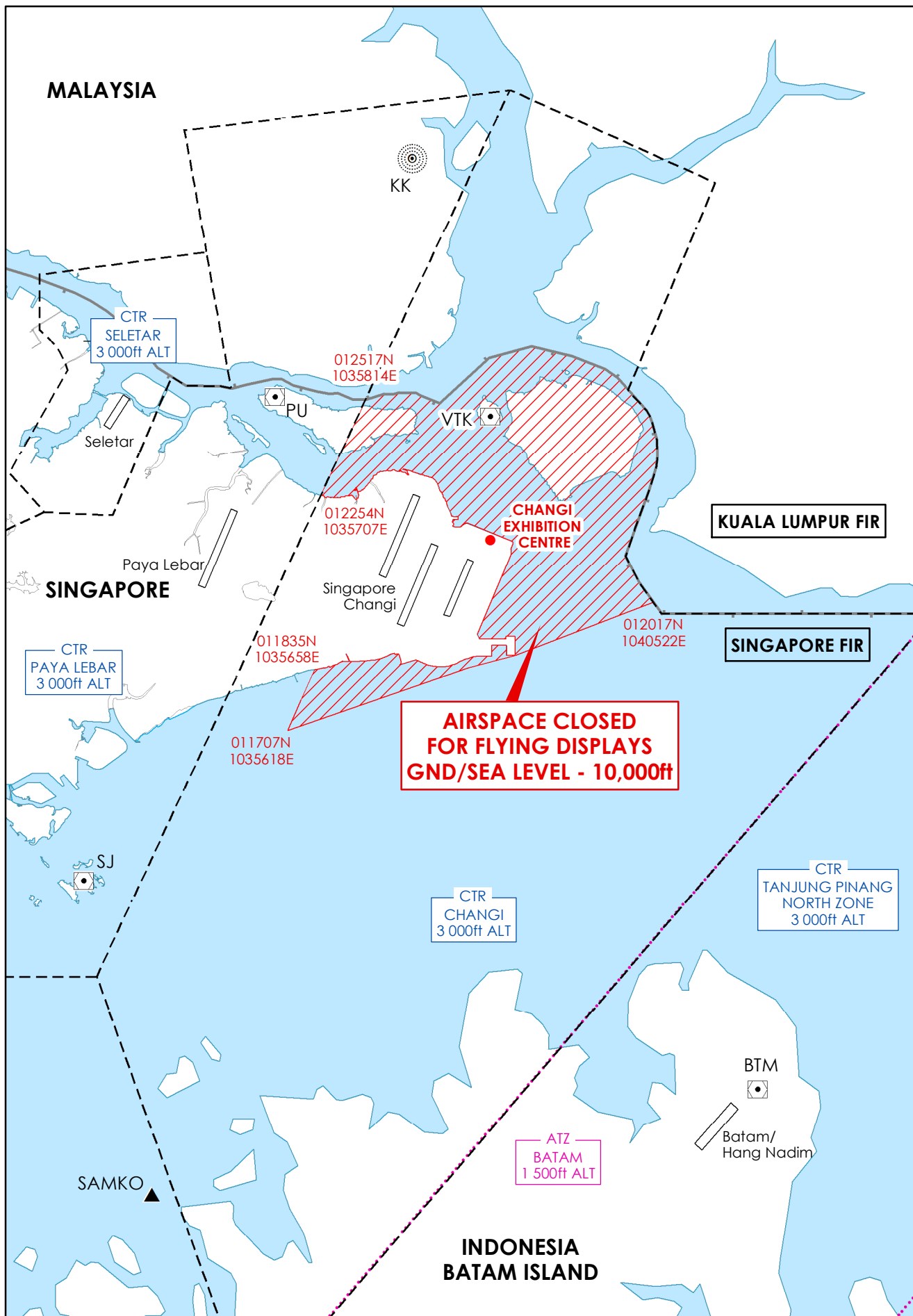
2.6 For the first 15 minutes following the re-opening of Singapore Changi Airport, priority will be given to Changi arrivals to land on both runways while departures will depart on Runway 02C/20C only. Segregated mode of operations will resume thereafter.

**Annex A****Closure of Singapore Changi Airport and airspace during the Singapore Airshow 2018 Exhibition Flying Displays**

Details of the period of closures of Singapore Changi Airport and airspace are shown below:

	<b>Type of Activity</b>	<b>Day / Date</b>	<b>Timing (UTC)</b>
a)	Practices	Wednesday, 31 Jan 18	0230 – 0300
		Thursday, 01 Feb 18	0230 – 0310
		Friday, 02 Feb 18	0230 – 0320
		Saturday, 03 Feb 18	0230 – 0320
b)	Combined Rehearsal	Sunday, 04 Feb 18	0230 – 0330
	Combined Rehearsal (back-up)	Monday, 05 Feb 18	0230 – 0330
c)	Flying Displays	Tuesday, 06 Feb 18	0430 – 0530
		Wednesday, 07 Feb 18	0330 – 0430
		Thursday, 08 Feb 18	0330 – 0430
		Friday, 09 Feb 18	NIL
		Saturday, 10 Feb 18	0330 – 0400
			0630 – 0700
		Sunday, 11 Feb 18	0330 – 0400
0630 – 0700			

# SINGAPORE AIRSHOW 2018 EXHIBITION AIRSPACE CLOSURE FOR FLYING DISPLAYS



*PAGE INTENTIONALLY LEFT BLANK*