

Contact

Post:

REPUBLIC OF SINGAPORE
AERONAUTICAL
INFORMATION SERVICES
CIVIL AVIATION AUTHORITY
OF SINGAPORE
SINGAPORE CHANGI
AIRPORT
P.O. BOX 1, SINGAPORE
918141

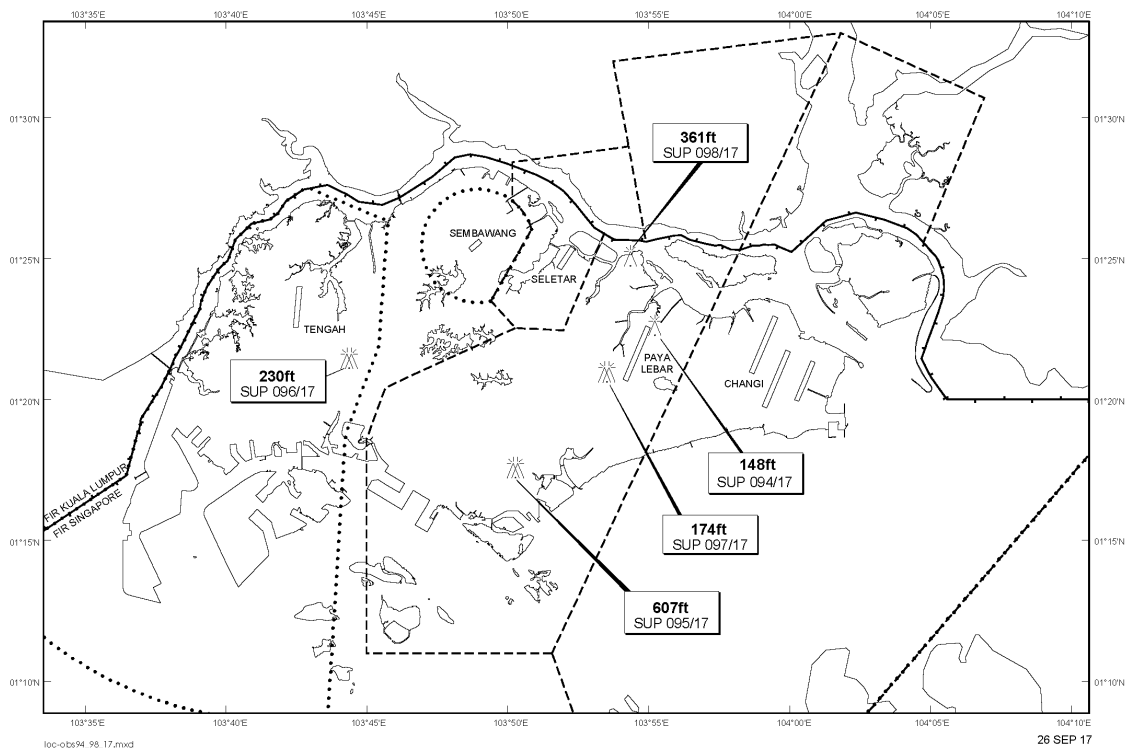
Tel: (65) 6595 6051

AFS: WSSSYNYX

Fax: (65) 64410221

Email: caas_singaporeais@caas.gov.sgURL: www.caas.gov.sgURL: <https://fpl-1.caasaim.gov.sg>**AIP Supplement for
Singapore****AIP SUP
097/2017****Effective from 26 SEP 2017****/ 24 JAN 2018****Published on 26 SEP 2017****PAYA LEBAR AIRPORT – CRAWLER CRANES AND PILING RIGS**

WIE/1801241559 three crawler cranes and three piling rigs, height 174ft AMSL, erected at 012059N 1035330E (bearing 241.6 degrees, distance 0.8nm from Paya Lebar ARP - within Paya Lebar Control Zone). Crawler cranes and piling rigs marked and lighted at night. (NOTAM A2346/17 dated 02/08/17 is hereby superseded.)

LOCATION OF OBSTACLES

PAGE INTENTIONALLY LEFT BLANK