

Contact

Post:

REPUBLIC OF SINGAPORE
AERONAUTICAL
INFORMATION SERVICES
CIVIL AVIATION AUTHORITY
OF SINGAPORE
SINGAPORE CHANGI
AIRPORT
P.O. BOX 1, SINGAPORE
918141

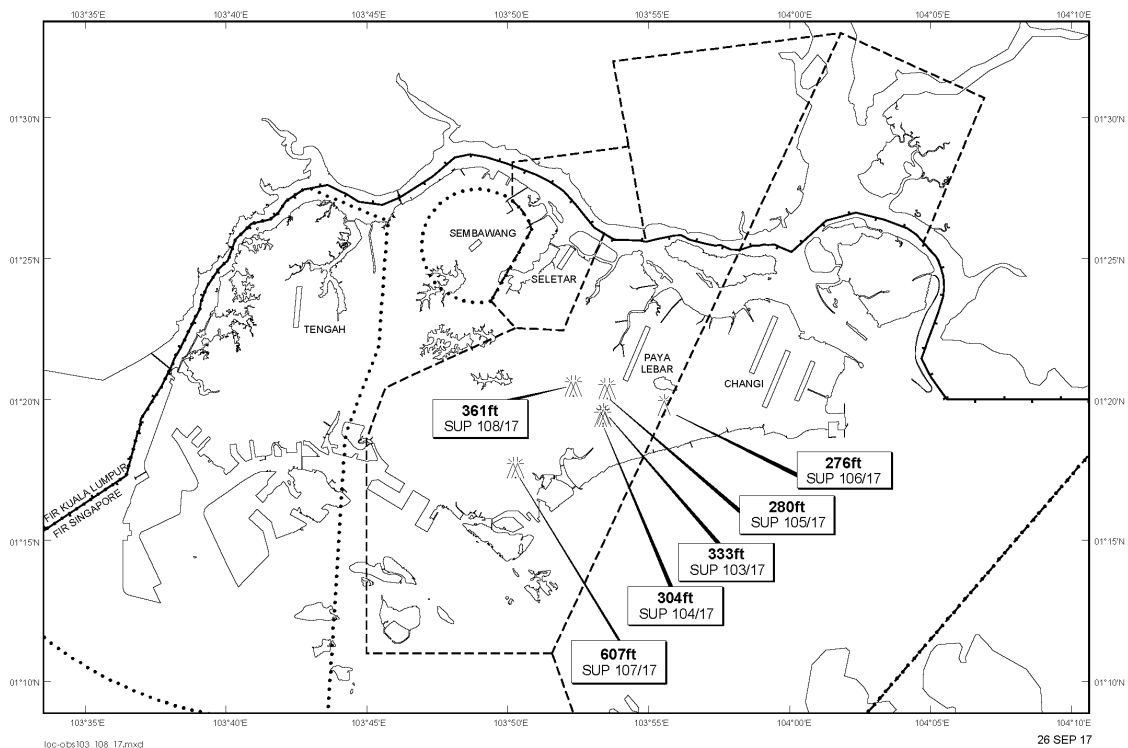
Tel: (65) 6595 6051

AFS: WSSSYNYX

Fax: (65) 64410221

Email: caas_singaporeais@caas.gov.sgURL: www.caas.gov.sgURL: <https://fpl-1.caasaim.gov.sg>**AIP Supplement for
Singapore****AIP SUP
103/2017****Effective from 26 SEP 2017****/ 31 DEC 2017****Published on 26 SEP 2017****PAYA LEBAR AIRPORT – MOBILE CRANE**

WIE/1712311559 one mobile crane, height 333ft AMSL, erected at 011930N 1035323E (bearing 202.8 degrees, distance 2nm from Paya Lebar ARP - within Paya Lebar Control Zone). Mobile crane marked and lighted at night. (NOTAM A2557/17 dated 24/08/17 is hereby superseded.)

LOCATION OF OBSTACLES

PAGE INTENTIONALLY LEFT BLANK