

Contact

Post:

REPUBLIC OF SINGAPORE
AERONAUTICAL
INFORMATION SERVICES
CIVIL AVIATION AUTHORITY
OF SINGAPORE
SINGAPORE CHANGI
AIRPORT
P.O. BOX 1, SINGAPORE
918141

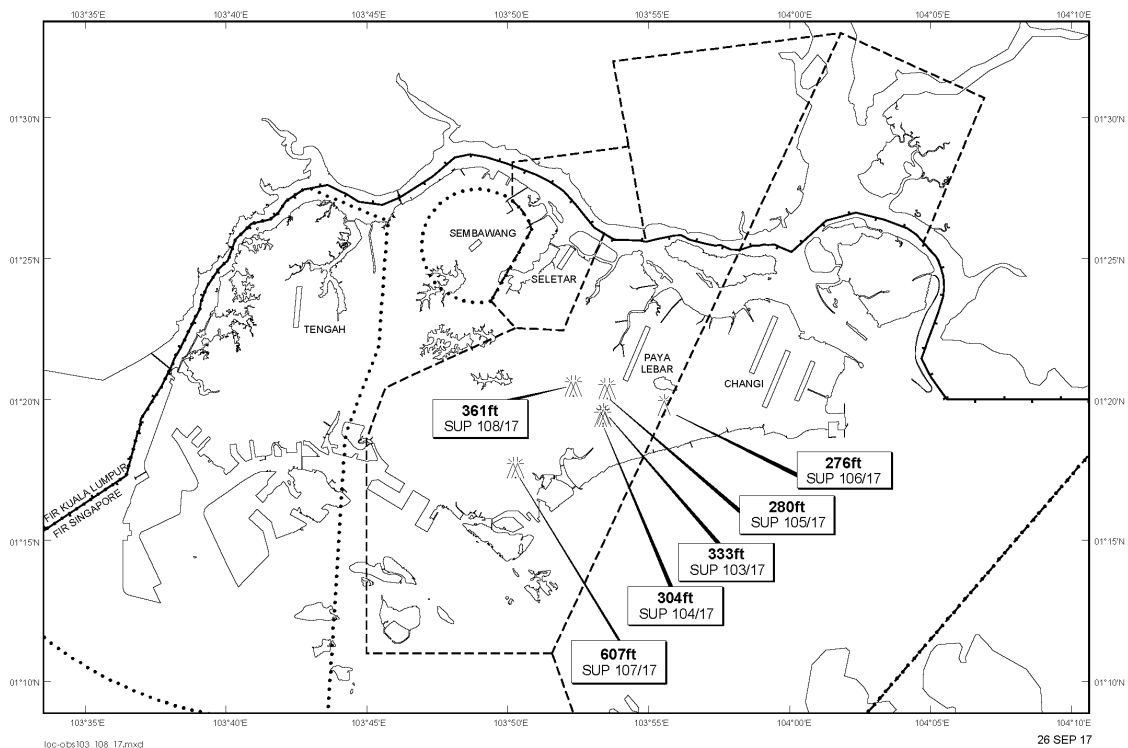
Tel: (65) 6595 6051

AFS: WSSSYNYX

Fax: (65) 64410221

Email: caas_singaporeais@caas.gov.sgURL: www.caas.gov.sgURL: <https://fpl-1.caasaim.gov.sg>**AIP Supplement for
Singapore****AIP SUP
105/2017****Effective from 29 SEP 2017****/ 31 DEC 2018****Published on 26 SEP 2017****PAYA LEBAR AIRPORT – LUFFER CRANE AND SADDLE CRANE**

Between 1709292200 and 1812311559 one luffer crane and one saddle crane, height 280ft AMSL, erected at 012023N 1035331E (bearing 214.5 degrees, distance 1.2nm from Paya Lebar ARP - within Paya Lebar Control Zone). Luffer crane and saddle crane marked and lighted at night. (NOTAM A2879/17 dated 22/09/17 is hereby superseded.)

LOCATION OF OBSTACLES

PAGE INTENTIONALLY LEFT BLANK