

Contact

Post:

REPUBLIC OF SINGAPORE
AERONAUTICAL
INFORMATION SERVICES
CIVIL AVIATION AUTHORITY
OF SINGAPORE
SINGAPORE CHANGI
AIRPORT
P.O. BOX 1, SINGAPORE
918141

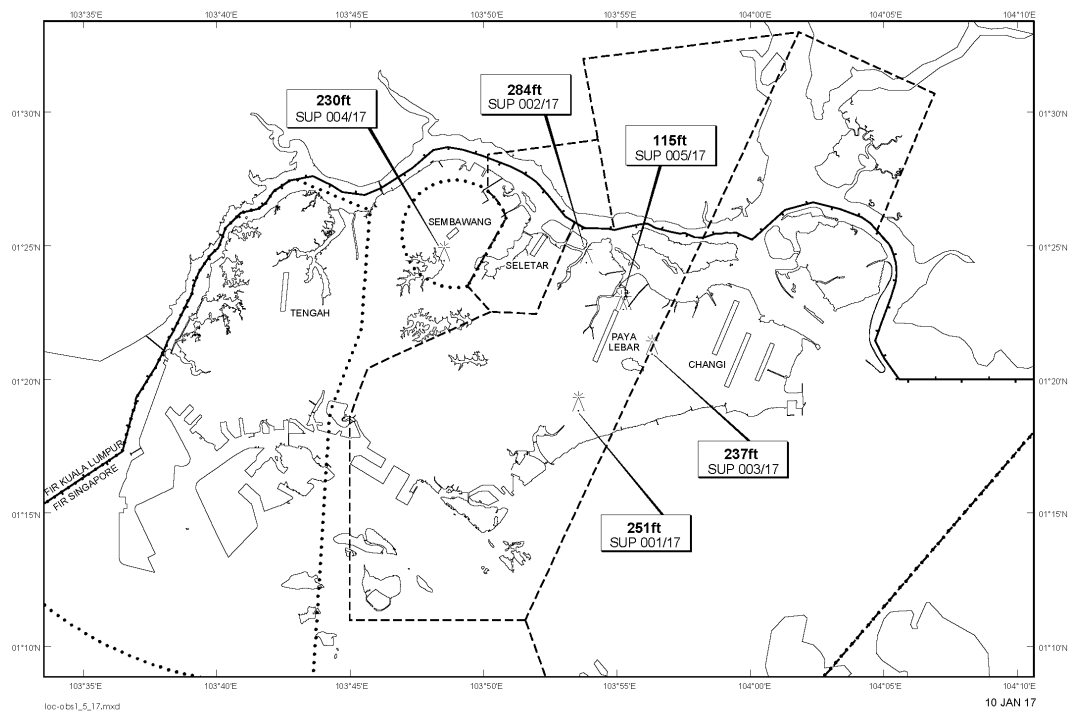
Tel: (65) 6595 6051

AFS: WSSSYNYX

Fax: (65) 64410221

Email: caas_singaporeais@caas.gov.sgURL: www.caas.gov.sgURL: <https://fpl-1.caasaim.gov.sg>**AIP Supplement for
Singapore****AIP SUP
001/2017****Effective from 10 JAN 2017****/ 30 MAR 2017****Published on 10 JAN 2017****PAYA LEBAR AIRPORT – MOBILE CRANE**

WIE/1703301559 one mobile crane, height 251ft AMSL, erected at 011911N 1035333E (bearing 196 degrees, distance 2.3nm from Paya Lebar ARP - within Paya Lebar CTR). Mobile crane marked and lighted at night. (NOTAM A2273/16 dated 20/09/16 is hereby superseded.)

LOCATION OF OBSTACLES

PAGE INTENTIONALLY LEFT BLANK