

Telephone: (65) 6595 6051
AFS: WSSSYNYX
Facsimile: (65) 6441 0221
caas_singaporeais@caas.gov.sg
www.caas.gov.sg

REPUBLIC OF SINGAPORE
AERONAUTICAL INFORMATION SERVICES
CIVIL AVIATION AUTHORITY OF SINGAPORE
SINGAPORE CHANGI AIRPORT
P.O. BOX 1, SINGAPORE 918141

REVISIONS TO SINGAPORE CHANGI AIRPORT RUNWAY 02C/20C DEPARTURE END OF RUNWAY (DER) FOR STANDARD INSTRUMENT DEPARTURES (SIDS)

1 INTRODUCTION

- 1.1 The purpose of this AIP Supplement is to provide details on the revisions to Singapore Changi Airport Runway 02C/20C DER for SIDs due to the shortening of the clearways for Runway 02C/20C from its current 270m to 60m. The revised DER for SIDs Runway 02C/20C shall be effective from **0000UTC, 17 September 2015**.

2 REVISED DER FOR SIDS RUNWAY 02C/20C

- 2.1 The existing DER for Runway 02C/20C will be revised as follows:

Runway	Existing DER	New DER
02C	01°21'52"N 104°00'00"E	01°21'45"N 103°59'57"E
20C	01°19'35"N 103°59'02"E	01°19'42"N 103°59'05"E

- 2.2 The following SIDs will be updated with the new DERs (see charts in the respective Appendices):

S/N	SID to be updated with the new DER	Chart for updated SID
i	ADMIM 1A and 1B	Appendix A-1
ii	ANITO 6A and 5B	Appendix A-2
iii	AROSO 2A and 2B	Appendix A-3
iv	BAVUS 1A and 1B	Appendix A-4
v	KADAR 1A and 1B	Appendix A-5
vi	MASBO 2A and 2B	Appendix A-6
vii	TOMAN 2A and 2B	Appendix A-7
viii	VENIX 1A and 1B	Appendix A-8
ix	VMR 5A and 6B	Appendix A-9

3 CANCELLATION

- 3.1 This AIP Supplement 137/15 will remain current until the information is incorporated into AIP Singapore.

**STANDARD DEPARTURE CHART
RNAV (GNSS) -
INSTRUMENT (SID)**

TWR 118.6 / 118.25
APP 120.3
ACC 133.25

TRANSITION ALTITUDE
11 000ft

D-ATIS AP ID-WSSSS
128.6

**SINGAPORE/Singapore Changi
RWY 02C/20C
ADMIM DEPARTURES
ADMIM 1A (R02C)
ADMIM 1B (R20C)**

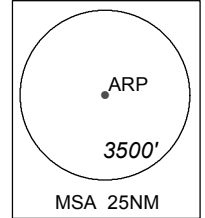
ELEV, ALT IN FEET
BEARINGS, TRACKS AND
RADIALS ARE MAGNETIC
VAR 26°E (2015)

DISTANCES IN NM
NOTE: RADAR REQUIRED

NOTE: ACFT UNABLE TO FLY THE SID
PROFILE SHALL INFORM ATC
PRIOR TO DEPARTURE AND TO
EXPECT RADAR VECTORED,
IF NECESSARY

NOTE: RNAV-1 NAVIGATION SPECIFICATION
GNSS REQUIRED

NOTE: REFER TO BACK PAGE FOR
- FORMAL AND TABULAR DESCRIPTIONS
- RADIO COM FAILURE PROCEDURES



GENERAL INFORMATION

**INITIAL CLIMB
3000FT OR AS DIRECTED BY ATC**

ALL SIDs INCLUDE NOISE PREFERENTIAL ROUTES.

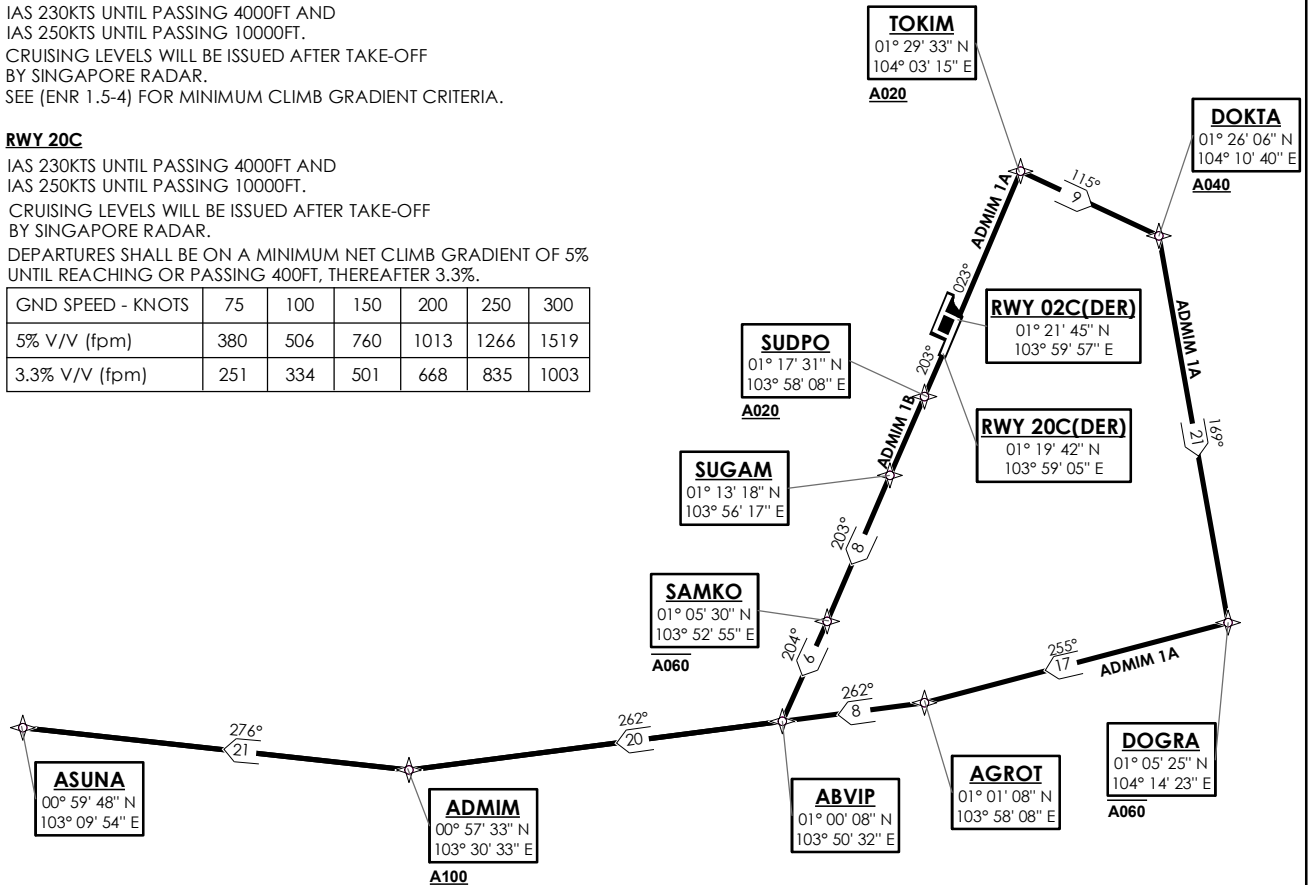
RWY 02C

IAS 230KTS UNTIL PASSING 4000FT AND
IAS 250KTS UNTIL PASSING 10000FT.
CRUISING LEVELS WILL BE ISSUED AFTER TAKE-OFF
BY SINGAPORE RADAR.
SEE (ENR 1.5-4) FOR MINIMUM CLIMB GRADIENT CRITERIA.

RWY 20C

IAS 230KTS UNTIL PASSING 4000FT AND
IAS 250KTS UNTIL PASSING 10000FT.
CRUISING LEVELS WILL BE ISSUED AFTER TAKE-OFF
BY SINGAPORE RADAR.
DEPARTURES SHALL BE ON A MINIMUM NET CLIMB GRADIENT OF 5%
UNTIL REACHING OR PASSING 400FT, THEREAFTER 3.3%.

GND SPEED - KNOTS	75	100	150	200	250	300
5% V/V (fpm)	380	506	760	1013	1266	1519
3.3% V/V (fpm)	251	334	501	668	835	1003



NOT TO SCALE

ADMIM 1A (SID) RNAV GNSS RWY 02C - DESCRIPTIONS

Formal & Abbreviated Descriptions

Formal Description	Abbreviated Description	Path Terminator	Fly-Over required
To TOKIM on course 023° at or above 2000ft, turn right. To DOKTA at or above 4000ft, turn right. To DOGRA at or below 6000ft, turn right. To AGROT, turn right. To ABVIP. To ADMIM at or above 10000ft, turn right. To ASUNA.	TOKIM [M023; A020+; R] -	CF	N
	DOKTA [A040+; R] -	TF	N
	DOGRA [A060-; R] -	TF	N
	AGROT [R] -	TF	N
	ABVIP -	TF	N
	ADMIM [A100+; R] -	TF	N
	ASUNA	TF	N

Tabular Descriptions

Path Term	Waypoint Name	Fly-Over	Course °M(°T)	Magnetic Variation	Turn Direction	Altitude	Speed Limit	Navigation Spec
CF	TOKIM	-	023(022.5)	-0.5	R	A020+	-	RNAV1
TF	DOKTA	-	115(114.5)	-0.5	R	A040+	-	RNAV1
TF	DOGRA	-	169(168.5)	-0.5	R	A060-	-	RNAV1
TF	AGROT	-	255(254.5)	-0.5	R	-	-	RNAV1
TF	ABVIP	-	262(261.5)	-0.5	-	-	-	RNAV1
TF	ADMIM	-	262(261.5)	-0.5	R	A100+	-	RNAV1
TF	ASUNA	-	276(275.5)	-0.5	-	-	-	RNAV1

ADMIM 1B (SID) RNAV GNSS RWY 20C - DESCRIPTIONS

Formal & Abbreviated Descriptions

Formal Description	Abbreviated Description	Path Terminator	Fly-Over required
To SUDPO on course 203° at or above 2000ft. To SUGAM. To SAMKO at or below 6000ft, turn right. To ABVIP, turn right. To ADMIM at or above 10000ft, turn right. To ASUNA.	SUDPO [M203; A020+] -	CF	N
	SUGAM -	TF	N
	SAMKO [A060-; R] -	TF	N
	ABVIP [R] -	TF	N
	ADMIM [A100+; R] -	TF	N
	ASUNA	TF	N

Tabular Descriptions

Path Term	Waypoint Name	Fly-Over	Course °M(°T)	Magnetic Variation	Turn Direction	Altitude	Speed Limit	Navigation Spec
CF	SUDPO	-	203(202.5)	-0.5	-	A020+	-	RNAV1
TF	SUGAM	-	203(202.5)	-0.5	-	-	-	RNAV1
TF	SAMKO	-	203(202.5)	-0.5	R	A060-	-	RNAV1
TF	ABVIP	-	204(203.5)	-0.5	R	-	-	RNAV1
TF	ADMIM	-	262(261.5)	-0.5	R	A100+	-	RNAV1
TF	ASUNA	-	276(275.5)	-0.5	-	-	-	RNAV1

RADIO COMMUNICATIONS FAILURE PROCEDURE

1	SET TRANSPONDER TO MODE A/C CODE 7600
2	<p>COMMUNICATIONS FAILURE OCCURS IMMEDIATELY AFTER DEPARTURE ON:</p> <p>RWY 02C - PROCEED STRAIGHT AHEAD TO NYLON HOLDING AREA (NHA) CLIMBING TO THE LAST ASSIGNED ALTITUDE, THEREAFTER REFER TO SINGAPORE AIP ON RADIO COMMUNICATIONS FAILURE PROCEDURE.</p> <p>RWY 20C - PROCEED STRAIGHT AHEAD TO SAMKO HOLDING AREA (SHA) CLIMBING TO THE LAST ASSIGNED ALTITUDE, THEREAFTER REFER TO SINGAPORE AIP ON RADIO COMMUNICATIONS FAILURE PROCEDURE.</p>

**STANDARD DEPARTURE CHART
RNAV (GNSS) -
INSTRUMENT (SID)**

TWR 118.6 / 118.25 APP 120.3 ACC 134.4	TRANSITION ALTITUDE 11 000ft
	D-ATIS AP ID-WSSS 128.6

**SINGAPORE/Singapore Changi
RWY 02C/20C
ANITO DEPARTURES
ANITO 6A (R02C)
ANITO 5B (R20C)**

ELEV, ALT IN FEET
BEARINGS, TRACKS AND
RADIALS ARE MAGNETIC
VAR 26'E (2015)

DISTANCES IN NM

NOTE: RADAR REQUIRED

NOTE: ACFT UNABLE TO FLY THE SID
PROFILE SHALL INFORM ATC
PRIOR TO DEPARTURE AND TO
EXPECT RADAR VECTORED,
IF NECESSARY

NOTE: RNAV-1 NAVIGATION SPECIFICATION
GNSS REQUIRED

NOTE: REFER TO BACK PAGE FOR
- FORMAL AND TABULAR DESCRIPTIONS
- RADIO COM FAILURE PROCEDURES

GENERAL INFORMATION

**INITIAL CLIMB
3000FT OR AS DIRECTED BY ATC**

ON INITIAL CONTACT WHEN REQUESTING ATC,
INFORM ATC OF THE FLIGHT LEVEL AIRCRAFT
CAN CROSS ANITO

ALL SIDs INCLUDE NOISE PREFERENTIAL ROUTES.

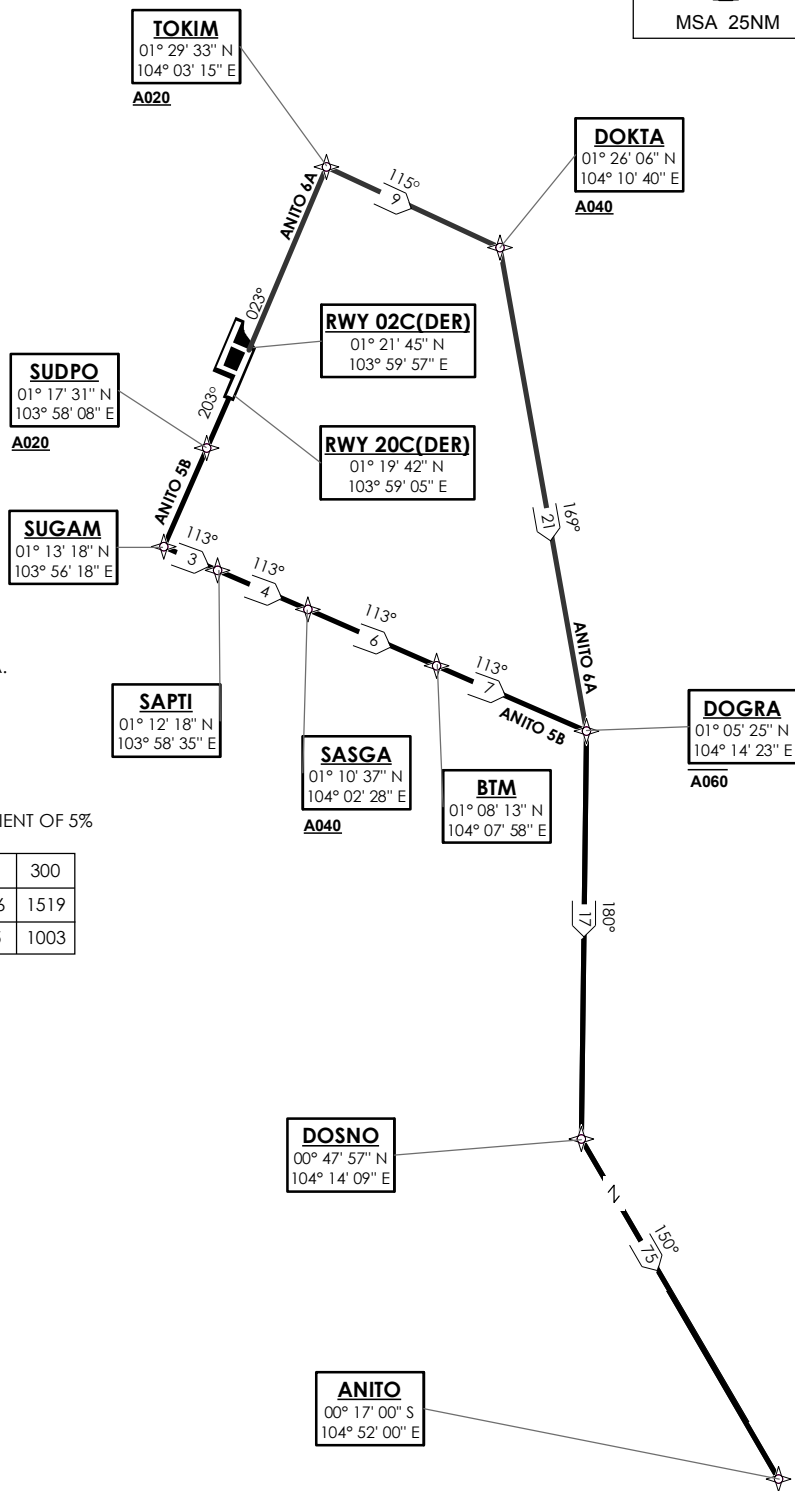
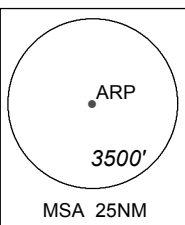
RWY 02C

IAS 230KTS UNTIL PASSING 4000FT AND
IAS 250KTS UNTIL PASSING 10000FT.
CRUISING LEVELS WILL BE ISSUED AFTER TAKE-OFF
BY SINGAPORE RADAR.
SEE (ENR 1.5-4) FOR MINIMUM CLIMB GRADIENT CRITERIA.

RWY 20C

IAS 230KTS UNTIL PASSING 4000FT AND
IAS 250KTS UNTIL PASSING 10000FT.
CRUISING LEVELS WILL BE ISSUED AFTER TAKE-OFF
BY SINGAPORE RADAR.
DEPARTURES SHALL BE ON A MINIMUM NET CLIMB GRADIENT OF 5%
UNTIL REACHING OR PASSING 400FT, THEREAFTER 3.3%.

GND SPEED - KNOTS	75	100	150	200	250	300
5% V/V (fpm)	380	506	760	1013	1266	1519
3.3% V/V (fpm)	251	334	501	668	835	1003



NOT TO SCALE

ANITO 6A (SID) RNAV GNSS RWY 02C - DESCRIPTIONS

Formal & Abbreviated Descriptions

Formal Description	Abbreviated Description	Path Terminator	Fly-Over required
To TOKIM on course 023° at or above 2000ft, turn right. To DOKTA at or above 4000ft, turn right. To DOGRA at or below 6000ft, turn right. To DOSNO, turn left. To ANITO.	TOKIM [M023; A020+; R] -	CF	N
	DOKTA [A040+; R] -	TF	N
	DOGRA [A060-; R] -	TF	N
	DOSNO [L] -	TF	N
	ANITO	TF	N

Tabular Descriptions

Path Term	Waypoint Name	Fly-Over	Course °M(°T)	Magnetic Variation	Turn Direction	Altitude	Speed Limit	Navigation Spec
CF	TOKIM	-	023(022.5)	-0.5	R	A020+	-	RNAV1
TF	DOKTA	-	115(114.5)	-0.5	R	A040+	-	RNAV1
TF	DOGRA	-	169(168.5)	-0.5	R	A060-	-	RNAV1
TF	DOSNO	-	180(179.5)	-0.5	L	-	-	RNAV1
TF	ANITO	-	150(149.5)	-0.5	-	-	-	RNAV1

ANITO 5B (SID) RNAV GNSS RWY 20C - DESCRIPTIONS

Formal & Abbreviated Descriptions

Formal Description	Abbreviated Description	Path Terminator	Fly-Over required
To SUDPO on course 203° at or above 2000ft. To SUGAM, turn left. To SAPTI. To SASGA at or above 4000ft. To BTM. To DOGRA at or below 6000ft, turn right. To DOSNO, turn left. To ANITO.	SUDPO [M203; A020+] -	CF	N
	SUGAM [L] -	TF	N
	SAPTI -	TF	N
	SASGA [A040+] -	TF	N
	BTM -	TF	N
	DOGRA [A060-; R] -	TF	N
	DOSNO [L] -	TF	N
ANITO	TF	N	

Tabular Descriptions

Path Term	Waypoint Name	Fly-Over	Course °M(°T)	Magnetic Variation	Turn Direction	Altitude	Speed Limit	Navigation Spec
CF	SUDPO	-	203(202.5)	-0.5	-	A020+	-	RNAV1
TF	SUGAM	-	203(202.5)	-0.5	L	-	-	RNAV1
TF	SAPTI	-	113(113.3)	-0.5	-	-	-	RNAV1
TF	SASGA	-	113(113.3)	-0.5	-	A040+	-	RNAV1
TF	BTM	-	113(113.3)	-0.5	-	-	-	RNAV1
TF	DOGRA	-	113(113.3)	-0.5	R	A060-	-	RNAV1
TF	DOSNO	-	180(179.5)	-0.5	L	-	-	RNAV1
TF	ANITO	-	150(149.5)	-0.5	-	-	-	RNAV1

RADIO COMMUNICATIONS FAILURE PROCEDURE

1	SET TRANSPONDER TO MODE A/C CODE 7600
2	<p>COMMUNICATIONS FAILURE OCCURS IMMEDIATELY AFTER DEPARTURE ON:</p> <p>RWY 02C - PROCEED STRAIGHT AHEAD TO NYLON HOLDING AREA (NHA) CLIMBING TO THE LAST ASSIGNED ALTITUDE, THEREAFTER REFER TO SINGAPORE AIP ON RADIO COMMUNICATIONS FAILURE PROCEDURE.</p> <p>RWY 20C - PROCEED STRAIGHT AHEAD TO SAMKO HOLDING AREA (SHA) CLIMBING TO THE LAST ASSIGNED ALTITUDE, THEREAFTER REFER TO SINGAPORE AIP ON RADIO COMMUNICATIONS FAILURE PROCEDURE.</p>

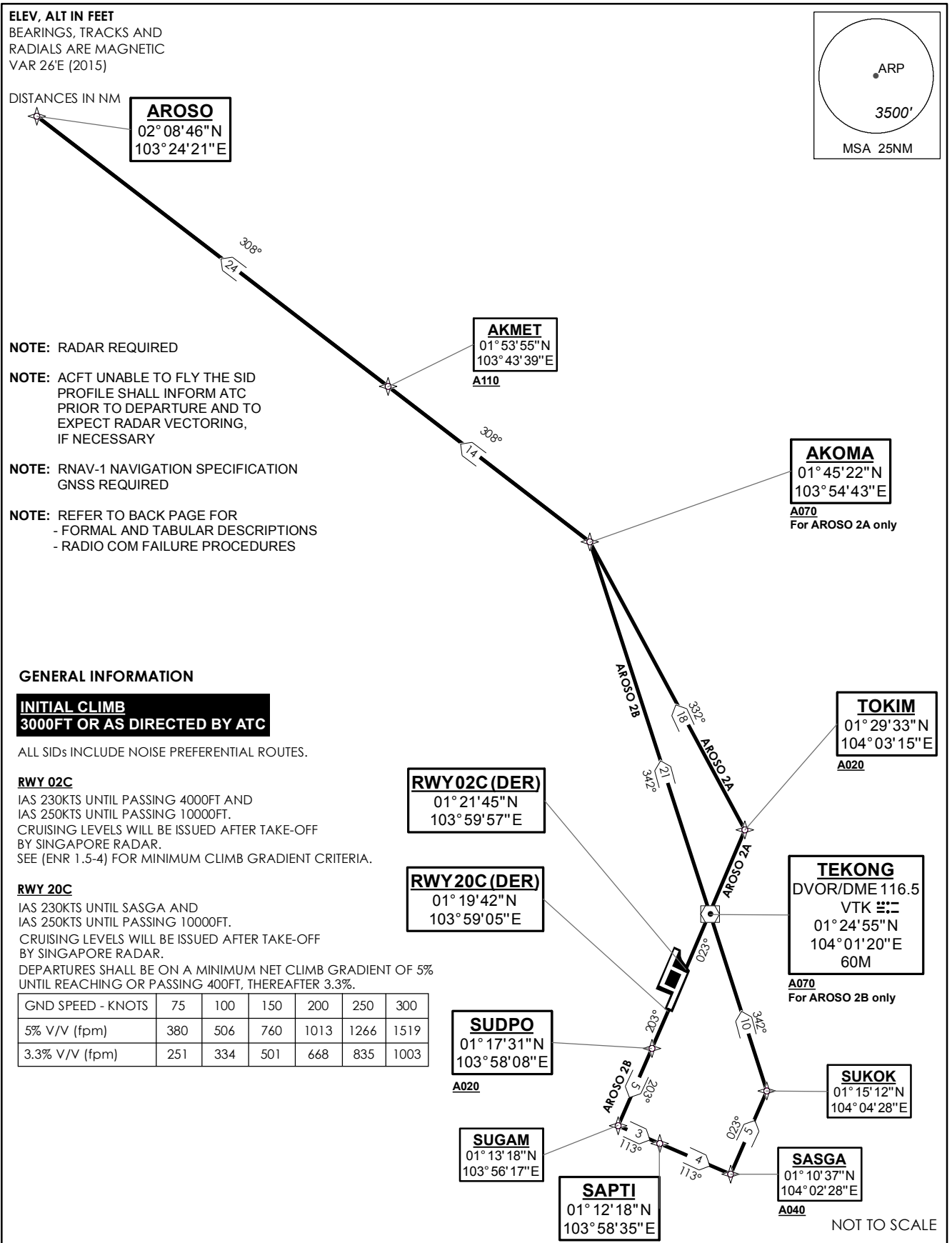
**STANDARD DEPARTURE CHART
RNAV (GNSS) -
INSTRUMENT (SID)**

TWR 118.6 / 118.25
APP 120.3
ACC 133.25

TRANSITION ALTITUDE
11 000ft

D-ATIS AP ID-WSSS
128.6

**SINGAPORE/Singapore Changi
RWY 02C/20C
AROSO DEPARTURES
AROSO 2A (R02C)
AROSO 2B (R20C)**



AROSO 2A (SID) RNAV GNSS RWY 02C - DESCRIPTIONS

Formal & Abbreviated Descriptions

Formal Description	Abbreviated Description	Path Terminator	Fly-Over required
To TOKIM on course 023° at or above 2000ft, turn left. To AKOMA at or above 7000ft, turn left. To AKMET at or above 11000ft. To AROSO.	TOKIM [M023; A020+; L] -	CF	N
	AKOMA [A070+; L] -	TF	N
	AKMET [A110+] -	TF	N
	AROSO	TF	N

Tabular Descriptions

Path Term	Waypoint Name	Fly-Over	Course °M(°T)	Magnetic Variation	Turn Direction	Altitude	Speed Limit	Navigation Spec
CF	TOKIM	-	023(022.5)	-0.5	L	A020+	-	RNAV1
TF	AKOMA	-	332(331.5)	-0.5	L	A070+	-	RNAV1
TF	AKMET	-	308(307.5)	-0.5	-	A110+	-	RNAV1
TF	AROSO	-	308(307.5)	-0.5	-	-	-	RNAV1

AROSO 2B (SID) RNAV GNSS RWY 20C - DESCRIPTIONS

Formal & Abbreviated Descriptions

Formal Description	Abbreviated Description	Path Terminator	Fly-Over required
To SUDPO on course 203° at or above 2000ft. To SUGAM, turn left. To SAPTI. To SASGA at or above 4000ft, speed 230kts, turn left. To SUKOK, turn left. To VTK at or above 7000ft. To AKOMA, turn left. To AKMET at or above 11000ft. To AROSO.	SUDPO [M203; A020+] -	CF	N
	SUGAM [L] -	TF	N
	SAPTI -	TF	N
	SASGA [A040+; K230; L] -	TF	N
	SUKOK [L] -	TF	N
	VTK [A070+] -	TF	N
	AKOMA [L] -	TF	N
	AKMET [A110+] -	TF	N
	AROSO	TF	N

Tabular Descriptions

Path Term	Waypoint Name	Fly-Over	Course °M(°T)	Magnetic Variation	Turn Direction	Altitude	Speed Limit	Navigation Spec
CF	SUDPO	-	203(202.5)	-0.5	-	A020+	-	RNAV1
TF	SUGAM	-	203(202.5)	-0.5	L	-	-	RNAV1
TF	SAPTI	-	113(113.3)	-0.5	-	-	-	RNAV1
TF	SASGA	-	113(113.3)	-0.5	L	A040+	K230	RNAV1
TF	SUKOK	-	023(023.6)	-0.5	L	-	-	RNAV1
TF	VTK	-	342(341.5)	-0.5	-	A070+	-	RNAV1
TF	AKOMA	-	342(341.5)	-0.5	L	-	-	RNAV1
TF	AKMET	-	308(307.5)	-0.5	-	A110+	-	RNAV1
TF	AROSO	-	308(307.5)	-0.5	-	-	-	RNAV1

RADIO COMMUNICATIONS FAILURE PROCEDURE

1	SET TRANSPONDER TO MODE A/C CODE 7600
2	<p>COMMUNICATIONS FAILURE OCCURS IMMEDIATELY AFTER DEPARTURE ON:</p> <p>RWY 02C - PROCEED STRAIGHT AHEAD TO NYLON HOLDING AREA (NHA) CLIMBING TO THE LAST ASSIGNED ALTITUDE, THEREAFTER REFER TO SINGAPORE AIP ON RADIO COMMUNICATIONS FAILURE PROCEDURE.</p> <p>RWY 20C - PROCEED STRAIGHT AHEAD TO SAMKO HOLDING AREA (SHA) CLIMBING TO THE LAST ASSIGNED ALTITUDE, THEREAFTER REFER TO SINGAPORE AIP ON RADIO COMMUNICATIONS FAILURE PROCEDURE.</p>

**STANDARD DEPARTURE CHART
RNAV (GNSS) -
INSTRUMENT (SID)**

TWR 118.6 / 118.25
APP 120.3
ACC 134.4

TRANSITION ALTITUDE
11 000ft

D-ATIS AP ID-WSSS
128.6

**SINGAPORE/Singapore Changi
RWY 02C/20C
BAVUS DEPARTURES
BAVUS 1A (R02C)
BAVUS 1B (R20C)**

ELEV, ALT IN FEET
BEARINGS, TRACKS AND
RADIALS ARE MAGNETIC
VAR 26°E (2015)

DISTANCES IN NM

NOTE: RADAR REQUIRED

NOTE: ACFT UNABLE TO FLY THE SID
PROFILE SHALL INFORM ATC
PRIOR TO DEPARTURE AND TO
EXPECT RADAR VECTURING,
IF NECESSARY

NOTE: RNAV-1 NAVIGATION SPECIFICATION
GNSS REQUIRED

NOTE: REFER TO BACK PAGE FOR
- FORMAL AND TABULAR DESCRIPTIONS
- RADIO COM FAILURE PROCEDURES

GENERAL INFORMATION

**INITIAL CLIMB
3000FT OR AS DIRECTED BY ATC**

ALL SIDs INCLUDE NOISE PREFERENTIAL ROUTES.

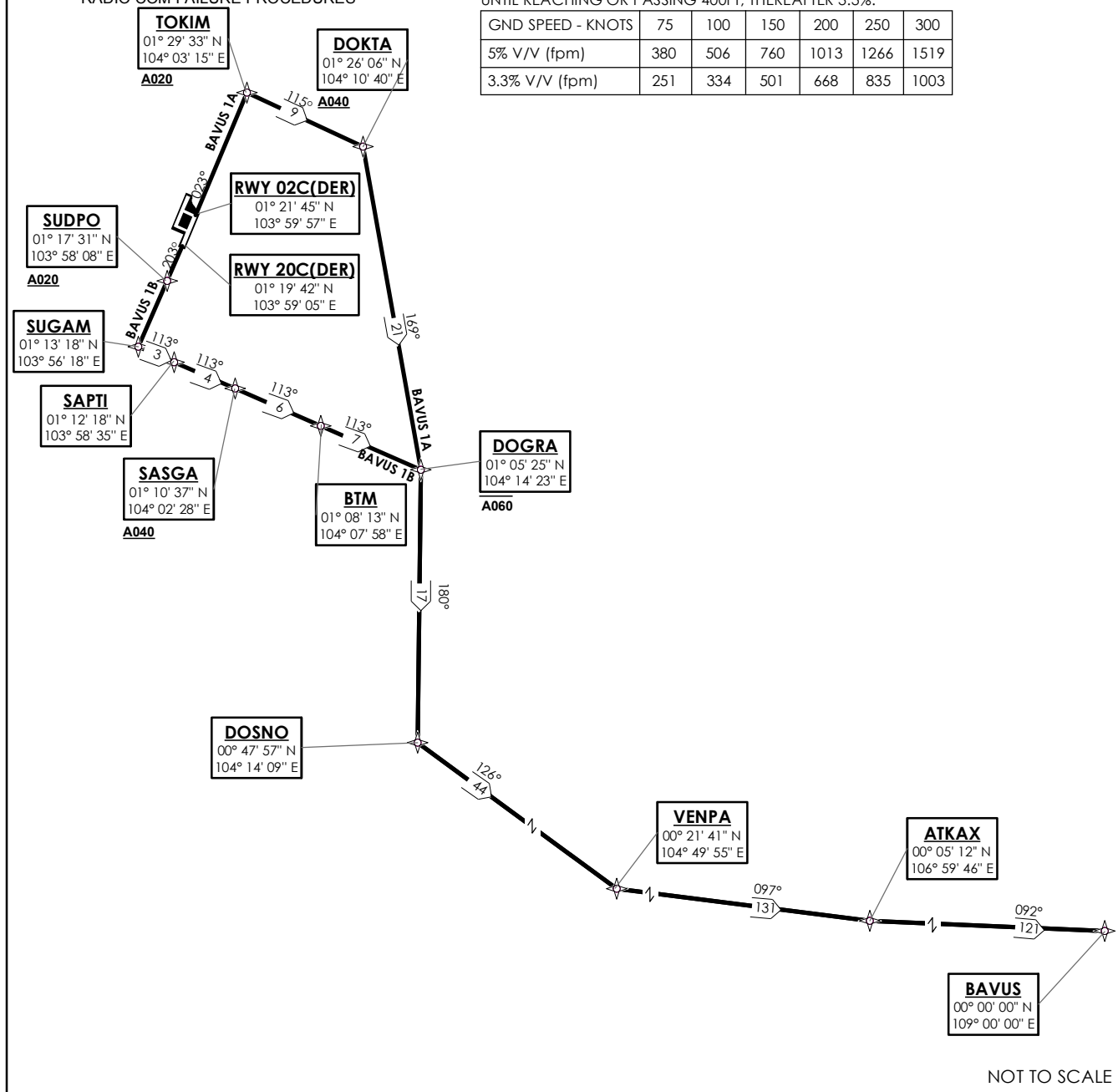
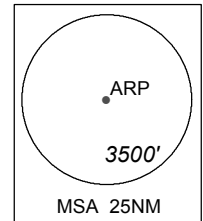
RWY 02C

IAS 230KTS UNTIL PASSING 4000FT AND
IAS 250KTS UNTIL PASSING 10000FT.
CRUISING LEVELS WILL BE ISSUED AFTER TAKE-OFF
BY SINGAPORE RADAR.
SEE (ENR 1.5-4) FOR MINIMUM CLIMB GRADIENT CRITERIA.

RWY 20C

IAS 230KTS UNTIL PASSING 4000FT AND
IAS 250KTS UNTIL PASSING 10000FT.
CRUISING LEVELS WILL BE ISSUED AFTER TAKE-OFF
BY SINGAPORE RADAR.
DEPARTURES SHALL BE ON A MINIMUM NET CLIMB GRADIENT OF 5%
UNTIL REACHING OR PASSING 400FT, THEREAFTER 3.3%.

GND SPEED - KNOTS	75	100	150	200	250	300
5% V/V (fpm)	380	506	760	1013	1266	1519
3.3% V/V (fpm)	251	334	501	668	835	1003



BAVUS 1A (SID) RNAV GNSS RWY 02C - DESCRIPTIONS

Formal & Abbreviated Descriptions

Formal Description	Abbreviated Description	Path Terminator	Fly-Over required
To TOKIM on course 023° at or above 2000ft, turn right. To DOKTA at or above 4000ft, turn right. To DOGRA at or below 6000ft, turn right. To DOSNO, turn left. To VENPA, turn left. To ATKAX, turn left. To BAVUS.	TOKIM [M023; A020+; R] -	CF	N
	DOKTA [A040+; R] -	TF	N
	DOGRA [A060-; R] -	TF	N
	DOSNO [L] -	TF	N
	VENPA [L] -	TF	N
	ATKAX [L] -	TF	N
	BAVUS	TF	N

Tabular Descriptions

Path Term	Waypoint Name	Fly-Over	Course °M(°T)	Magnetic Variation	Turn Direction	Altitude	Speed Limit	Navigation Spec
CF	TOKIM	-	023(022.5)	-0.5	R	A020+	-	RNAV1
TF	DOKTA	-	115(114.5)	-0.5	R	A040+	-	RNAV1
TF	DOGRA	-	169(168.5)	-0.5	R	A060-	-	RNAV1
TF	DOSNO	-	180(179.5)	-0.5	L	-	-	RNAV1
TF	VENPA	-	126(125.5)	-0.5	L	-	-	RNAV1
TF	ATKAX	-	097(096.5)	-0.5	L	-	-	RNAV1
TF	BAVUS	-	092(091.5)	-0.5	-	-	-	RNAV1

BAVUS 1B (SID) RNAV GNSS RWY 20C - DESCRIPTIONS

Formal & Abbreviated Descriptions

Formal Description	Abbreviated Description	Path Terminator	Fly-Over required
To SUDPO on course 203° at or above 2000ft. To SUGAM, speed turn left. To SAPTI. To SASGA at or above 4000ft. To BTM. To DOGRA at or below 6000ft, turn right. To DOSNO, turn left. To VENPA, turn left. To ATKAX, turn left. To BAVUS.	SUDPO [M203; A020+] -	CF	N
	SUGAM [L] -	TF	N
	SAPTI -	TF	N
	SASGA [A040+] -	TF	N
	BTM -	TF	N
	DOGRA [A060-; R] -	TF	N
	DOSNO [L] -	TF	N
	VENPA [L] -	TF	N
	ATKAX [L] -	TF	N
	BAVUS	TF	N

Tabular Descriptions

Path Term	Waypoint Name	Fly-Over	Course °M(°T)	Magnetic Variation	Turn Direction	Altitude	Speed Limit	Navigation Spec
CF	SUDPO	-	203(202.5)	-0.5	-	A020+	-	RNAV1
TF	SUGAM	-	203(202.5)	-0.5	L	-	-	RNAV1
TF	SAPTI	-	113(113.3)	-0.5	-	-	-	RNAV1
TF	SASGA	-	113(113.3)	-0.5	-	A040+	-	RNAV1
TF	BTM	-	113(113.3)	-0.5	-	-	-	RNAV1
TF	DOGRA	-	113(113.3)	-0.5	R	A060-	-	RNAV1
TF	DOSNO	-	180(179.5)	-0.5	L	-	-	RNAV1
TF	VENPA	-	126(125.5)	-0.5	L	-	-	RNAV1
TF	ATKAX	-	097(096.5)	-0.5	L	-	-	RNAV1
TF	BAVUS	-	092(091.5)	-0.5	-	-	-	RNAV1

RADIO COMMUNICATIONS FAILURE PROCEDURE

1	SET TRANSPONDER TO MODE A/C CODE 7600
2	<p>COMMUNICATIONS FAILURE OCCURS IMMEDIATELY AFTER DEPARTURE ON:</p> <p>RWY 02C - PROCEED STRAIGHT AHEAD TO NYLON HOLDING AREA (NHA) CLIMBING TO THE LAST ASSIGNED ALTITUDE, THEREAFTER REFER TO SINGAPORE AIP ON RADIO COMMUNICATIONS FAILURE PROCEDURE.</p> <p>RWY 20C - PROCEED STRAIGHT AHEAD TO SAMKO HOLDING AREA (SHA) CLIMBING TO THE LAST ASSIGNED ALTITUDE, THEREAFTER REFER TO SINGAPORE AIP ON RADIO COMMUNICATIONS FAILURE PROCEDURE.</p>

**STANDARD DEPARTURE CHART
RNAV (GNSS) -
INSTRUMENT (SID)**

TWR 118.6 / 118.25
APP 120.3
ACC 134.4

TRANSITION ALTITUDE
11 000ft

D-ATIS AP ID-WSSS
128.6

**SINGAPORE/Singapore Changi
RWY 02C/20C
KADAR DEPARTURES
KADAR 1A (R02C)
KADAR 1B (R20C)**

ELEV, ALT IN FEET
BEARINGS, TRACKS AND
RADIALS ARE MAGNETIC
VAR 26°E (2015)

DISTANCES IN NM

NOTE: RADAR REQUIRED

NOTE: ACFT UNABLE TO FLY THE SID
PROFILE SHALL INFORM ATC
PRIOR TO DEPARTURE AND TO
EXPECT RADAR VECTORED,
IF NECESSARY

NOTE: RNAV-1 NAVIGATION SPECIFICATION
GNSS REQUIRED

NOTE: REFER TO BACK PAGE FOR
- FORMAL AND TABULAR DESCRIPTIONS
- RADIO COM FAILURE PROCEDURES

GENERAL INFORMATION

**INITIAL CLIMB
3000FT OR AS DIRECTED BY ATC**

ALL SIDs INCLUDE NOISE PREFERENTIAL ROUTES.

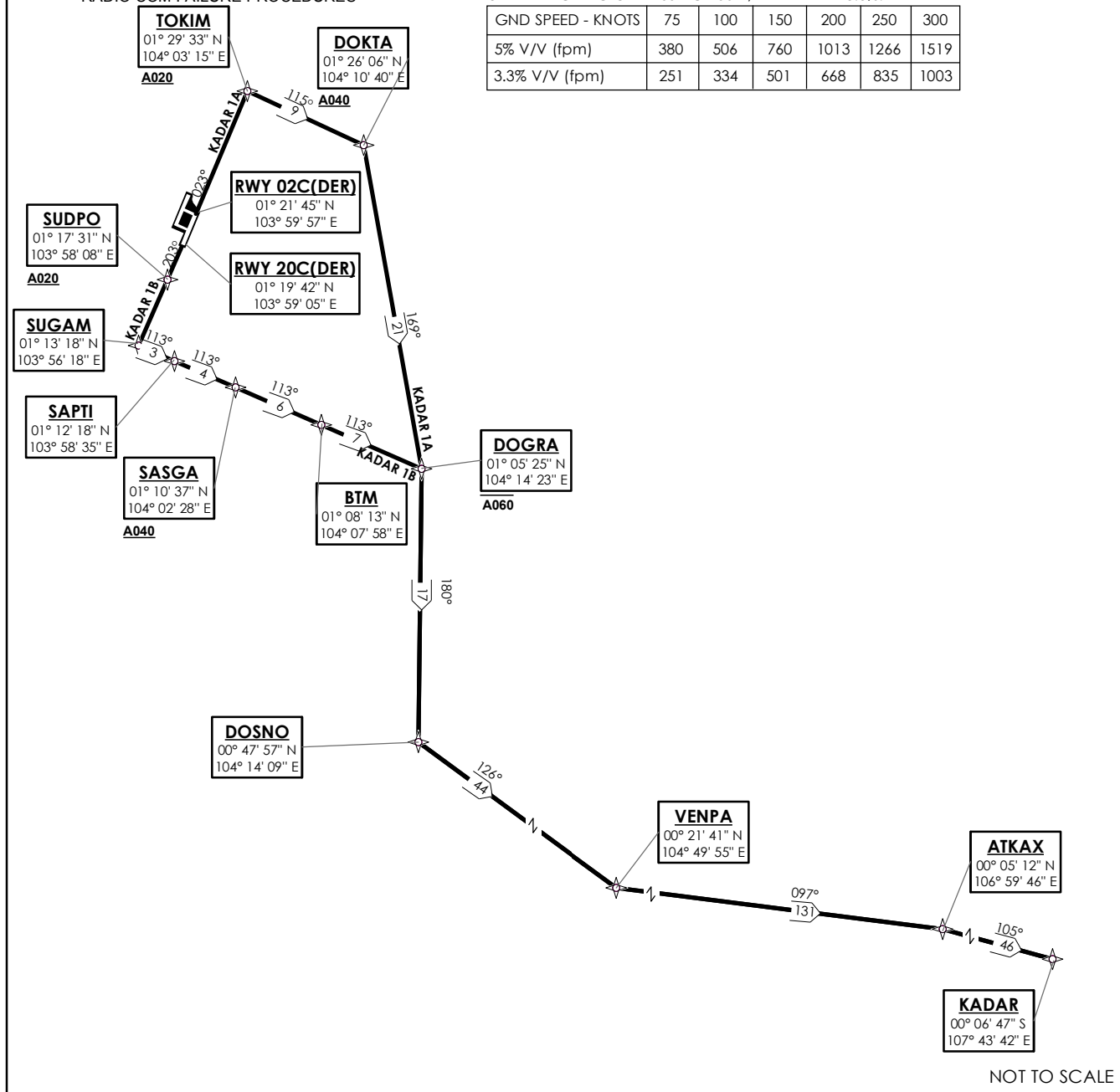
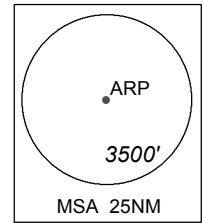
RWY 02C

IAS 230KTS UNTIL PASSING 4000FT AND
IAS 250KTS UNTIL PASSING 10000FT.
CRUISING LEVELS WILL BE ISSUED AFTER TAKE-OFF
BY SINGAPORE RADAR.
SEE (ENR 1.5-4) FOR MINIMUM CLIMB GRADIENT CRITERIA.

RWY 20C

IAS 230KTS UNTIL PASSING 4000FT AND
IAS 250KTS UNTIL PASSING 10000FT.
CRUISING LEVELS WILL BE ISSUED AFTER TAKE-OFF
BY SINGAPORE RADAR.
DEPARTURES SHALL BE ON A MINIMUM NET CLIMB GRADIENT OF 5%
UNTIL REACHING OR PASSING 400FT, THEREAFTER 3.3%.

GND SPEED - KNOTS	75	100	150	200	250	300
5% V/V (fpm)	380	506	760	1013	1266	1519
3.3% V/V (fpm)	251	334	501	668	835	1003



KADAR 1A (SID) RNAV GNSS RWY 02C - DESCRIPTIONS

Formal & Abbreviated Descriptions

Formal Description	Abbreviated Description	Path Terminator	Fly-Over required
To TOKIM on course 023° at or above 2000ft, turn right. To DOKTA at or above 4000ft, turn right. To DOGRA at or below 6000ft, turn right. To DOSNO, turn left. To VENPA, turn left. To ATKAX, turn right. To KADAR.	TOKIM [M023; A020+; R] -	CF	N
	DOKTA [A040+; R] -	TF	N
	DOGRA [A060-; R] -	TF	N
	DOSNO [L] -	TF	N
	VENPA [L] -	TF	N
	ATKAX [R] -	TF	N
	KADAR	TF	N

Tabular Descriptions

Path Term	Waypoint Name	Fly-Over	Course °M(°T)	Magnetic Variation	Turn Direction	Altitude	Speed Limit	Navigation Spec
CF	TOKIM	-	023(022.5)	-0.5	R	A020+	-	RNAV1
TF	DOKTA	-	115(114.5)	-0.5	R	A040+	-	RNAV1
TF	DOGRA	-	169(168.5)	-0.5	R	A060-	-	RNAV1
TF	DOSNO	-	180(179.5)	-0.5	L	-	-	RNAV1
TF	VENPA	-	126(125.5)	-0.5	L	-	-	RNAV1
TF	ATKAX	-	097(096.5)	-0.5	R	-	-	RNAV1
TF	KADAR	-	105(104.5)	-0.5	-	-	-	RNAV1

KADAR 1B (SID) RNAV GNSS RWY 20C - DESCRIPTIONS

Formal & Abbreviated Descriptions

Formal Description	Abbreviated Description	Path Terminator	Fly-Over required
To SUDPO on course 203° at or above 2000ft. To SUGAM, turn left. To SAPTI. To SASGA at or above 4000ft. To BTM. To DOGRA at or below 6000ft, turn right. To DOSNO, turn left. To VENPA, turn left. To ATKAX, turn right. To KADAR.	SUDPO [M203; A020+] -	CF	N
	SUGAM [L] -	TF	N
	SAPTI -	TF	N
	SASGA [A040+] -	TF	N
	BTM -	TF	N
	DOGRA [A060-; R] -	TF	N
	DOSNO [L] -	TF	N
	VENPA [L] -	TF	N
	ATKAX [R] -	TF	N
KADAR	TF	N	

Tabular Descriptions

Path Term	Waypoint Name	Fly-Over	Course °M(°T)	Magnetic Variation	Turn Direction	Altitude	Speed Limit	Navigation Spec
CF	SUDPO	-	203(202.5)	-0.5	-	A020+	-	RNAV1
TF	SUGAM	-	203(202.5)	-0.5	L	-	-	RNAV1
TF	SAPTI	-	113(113.3)	-0.5	-	-	-	RNAV1
TF	SASGA	-	113(113.3)	-0.5	-	A040+	-	RNAV1
TF	BTM	-	113(113.3)	-0.5	-	-	-	RNAV1
TF	DOGRA	-	113(113.3)	-0.5	R	A060-	-	RNAV1
TF	DOSNO	-	180(179.5)	-0.5	L	-	-	RNAV1
TF	VENPA	-	126(125.5)	-0.5	L	-	-	RNAV1
TF	ATKAX	-	097(096.5)	-0.5	R	-	-	RNAV1
TF	KADAR	-	105(104.5)	-0.5	-	-	-	RNAV1

RADIO COMMUNICATIONS FAILURE PROCEDURE

1	SET TRANSPONDER TO MODE A/C CODE 7600
2	<p>COMMUNICATIONS FAILURE OCCURS IMMEDIATELY AFTER DEPARTURE ON:</p> <p>RWY 02C - PROCEED STRAIGHT AHEAD TO NYLON HOLDING AREA (NHA) CLIMBING TO THE LAST ASSIGNED ALTITUDE, THEREAFTER REFER TO SINGAPORE AIP ON RADIO COMMUNICATIONS FAILURE PROCEDURE.</p> <p>RWY 20C - PROCEED STRAIGHT AHEAD TO SAMKO HOLDING AREA (SHA) CLIMBING TO THE LAST ASSIGNED ALTITUDE, THEREAFTER REFER TO SINGAPORE AIP ON RADIO COMMUNICATIONS FAILURE PROCEDURE.</p>

**STANDARD DEPARTURE CHART
RNAV (GNSS) -
INSTRUMENT (SID)**

TWR 118.6 / 118.25
APP 120.3
ACC 133.25

TRANSITION ALTITUDE
11 000ft

D-ATIS AP ID-WSSS
128.6

**SINGAPORE/Singapore Changi
RWY 02C/20C
MASBO DEPARTURES
MASBO 2A (R02C)
MASBO 2B (R20C)**

ELEV, ALT IN FEET

BEARINGS, TRACKS AND
RADIALS ARE MAGNETIC
VAR 26°E (2015)

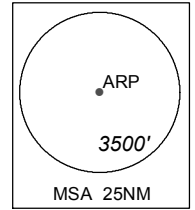
DISTANCES IN NM

NOTE: RADAR REQUIRED

NOTE: ACFT UNABLE TO FLY THE SID
PROFILE SHALL INFORM ATC
PRIOR TO DEPARTURE AND TO
EXPECT RADAR VECTURING,
IF NECESSARY

NOTE: RNAV-1 NAVIGATION SPECIFICATION
GNSS REQUIRED

NOTE: REFER TO BACK PAGE FOR
- FORMAL AND TABULAR DESCRIPTIONS
- RADIO COM FAILURE PROCEDURES



MASBO
02° 02' 48" N
102° 52' 51" E

SABKA
01° 50' 51" N
103° 17' 13" E

AGVAR
01° 47' 19" N
103° 41' 45" E
A110

AKOMA
01° 45' 22" N
103° 54' 43" E
A070
For MASBO 2A only

TOKIM
01° 29' 33" N
104° 03' 15" E
A020

RWY02C(DER)
01° 21' 45" N
103° 59' 57" E

RWY20C(DER)
01° 19' 42" N
103° 59' 05" E

TEKONG
DVOR/DME 116.5
VTK
01° 24' 55" N
104° 01' 20" E
60M
A070
For MASBO 2B only

SUDPO
01° 17' 31" N
103° 58' 08" E
A020

SUKOK
01° 15' 12" N
104° 04' 28" E

SUGAM
01° 13' 18" N
103° 56' 17" E

SASGA
01° 10' 37" N
104° 02' 28" E
A040

SAPTI
01° 12' 18" N
103° 58' 35" E

GENERAL INFORMATION

**INITIAL CLIMB
3000FT OR AS DIRECTED BY ATC**

ALL SIDs INCLUDE NOISE PREFERENTIAL ROUTES.

RWY 02C

IAS 230KTS UNTIL PASSING 4000FT AND
IAS 250KTS UNTIL PASSING 10000FT.
CRUISING LEVELS WILL BE ISSUED AFTER TAKE-OFF
BY SINGAPORE RADAR.
SEE (ENR 1.5-4) FOR MINIMUM CLIMB GRADIENT CRITERIA.

RWY 20C

IAS 230KTS UNTIL SASGA AND
IAS 250KTS UNTIL PASSING 10000FT.
CRUISING LEVELS WILL BE ISSUED AFTER TAKE-OFF
BY SINGAPORE RADAR.
DEPARTURES SHALL BE ON A MINIMUM NET CLIMB GRADIENT OF 5%
UNTIL REACHING OR PASSING 400FT, THEREAFTER 3.3%.

GND SPEED - KNOTS	75	100	150	200	250	300
5% V/V (fpm)	380	506	760	1013	1266	1519
3.3% V/V (fpm)	251	334	501	668	835	1003

MASBO 2A (SID) RNAV GNSS RWY 02C - DESCRIPTIONS

Formal & Abbreviated Descriptions

Formal Description	Abbreviated Description	Path Terminator	Fly-Over required
To TOKIM on course 023° at or above 2000ft, turn left. To AKOMA at or above 7000ft, turn left. To AGVAR at or above 11000ft. To SABKA, turn right. To MASBO.	TOKIM [M023; A020+; L] -	CF	N
	AKOMA [A070+; L] -	TF	N
	AGVAR [A110+] -	TF	N
	SABKA [R] -	TF	N
	MASBO	TF	N

Tabular Descriptions

Path Term	Waypoint Name	Fly-Over	Course °M(°T)	Magnetic Variation	Turn Direction	Altitude	Speed Limit	Navigation Spec
CF	TOKIM	-	023(022.5)	-0.5	L	A020+	-	RNAV1
TF	AKOMA	-	332(331.5)	-0.5	L	A070+	-	RNAV1
TF	AGVAR	-	278(277.5)	-0.5	-	A110+	-	RNAV1
TF	SABKA	-	278(277.5)	-0.5	R	-	-	RNAV1
TF	MASBO	-	296(295.5)	-0.5	-	-	-	RNAV1

MASBO 2B (SID) RNAV GNSS RWY 20C - DESCRIPTIONS

Formal & Abbreviated Descriptions

Formal Description	Abbreviated Description	Path Terminator	Fly-Over required
To SUDPO on course 203° at or above 2000ft. To SUGAM, turn left. To SAPTI. To SASGA at or above 4000ft, speed 230kts, turn left. To SUKOK, turn left. To VTK at or above 7000ft. To AKOMA, turn left. To AGVAR at or above 11000ft. To SABKA, turn right. To MASBO.	SUDPO [M203; A020+] -	CF	N
	SUGAM [L] -	TF	N
	SAPTI -	TF	N
	SASGA [A040+; K230; L] -	TF	N
	SUKOK [L] -	TF	N
	VTK [A070+] -	TF	N
	AKOMA [L] -	TF	N
	AGVAR [A110+] -	TF	N
	SABKA [R] -	TF	N
	MASBO	TF	N

Tabular Descriptions

Path Term	Waypoint Name	Fly-Over	Course °M(°T)	Magnetic Variation	Turn Direction	Altitude	Speed Limit	Navigation Spec
CF	SUDPO	-	203(202.5)	-0.5	-	A020+	-	RNAV1
TF	SUGAM	-	203(202.5)	-0.5	L	-	-	RNAV1
TF	SAPTI	-	113(113.3)	-0.5	-	-	-	RNAV1
TF	SASGA	-	113(113.3)	-0.5	L	A040+	K230	RNAV1
TF	SUKOK	-	023(023.6)	-0.5	L	-	-	RNAV1
TF	VTK	-	342(341.5)	-0.5	-	A070+	-	RNAV1
TF	AKOMA	-	342(341.5)	-0.5	L	-	-	RNAV1
TF	AGVAR	-	278(277.5)	-0.5	-	A110+	-	RNAV1
TF	SABKA	-	278(277.5)	-0.5	R	-	-	RNAV1
TF	MASBO	-	296(295.5)	-0.5	-	-	-	RNAV1

RADIO COMMUNICATIONS FAILURE PROCEDURE

1	SET TRANSPONDER TO MODE A/C CODE 7600
2	<p>COMMUNICATIONS FAILURE OCCURS IMMEDIATELY AFTER DEPARTURE ON:</p> <p>RWY 02C - PROCEED STRAIGHT AHEAD TO NYLON HOLDING AREA (NHA) CLIMBING TO THE LAST ASSIGNED ALTITUDE, THEREAFTER REFER TO SINGAPORE AIP ON RADIO COMMUNICATIONS FAILURE PROCEDURE.</p> <p>RWY 20C - PROCEED STRAIGHT AHEAD TO SAMKO HOLDING AREA (SHA) CLIMBING TO THE LAST ASSIGNED ALTITUDE, THEREAFTER REFER TO SINGAPORE AIP ON RADIO COMMUNICATIONS FAILURE PROCEDURE.</p>

STANDARD DEPARTURE CHART
RNAV (GNSS) -
INSTRUMENT (SID)

TWR 118.6 / 118.25
APP 120.3
ACC 134.2

TRANSITION ALTITUDE
11 000ft

D-ATIS AP ID-WSSS
128.6

SINGAPORE/Singapore Changi
RWY 02C/20C
TOMAN DEPARTURES
TOMAN 2A (R02C)
TOMAN 2B (R20C)

ELEV, ALT IN FEET
BEARINGS, TRACKS AND
RADIALS ARE MAGNETIC
VAR 26°E (2015)

DISTANCES IN NM
NOTE: RADAR REQUIRED

NOTE: ACFT UNABLE TO FLY THE SID
PROFILE SHALL INFORM ATC
PRIOR TO DEPARTURE AND TO
EXPECT RADAR VECTURING,
IF NECESSARY

NOTE: RNAV-1 NAVIGATION SPECIFICATION
GNSS REQUIRED

NOTE: REFER TO BACK PAGE FOR
- FORMAL AND TABULAR DESCRIPTIONS
- RADIO COM FAILURE PROCEDURES

GENERAL INFORMATION

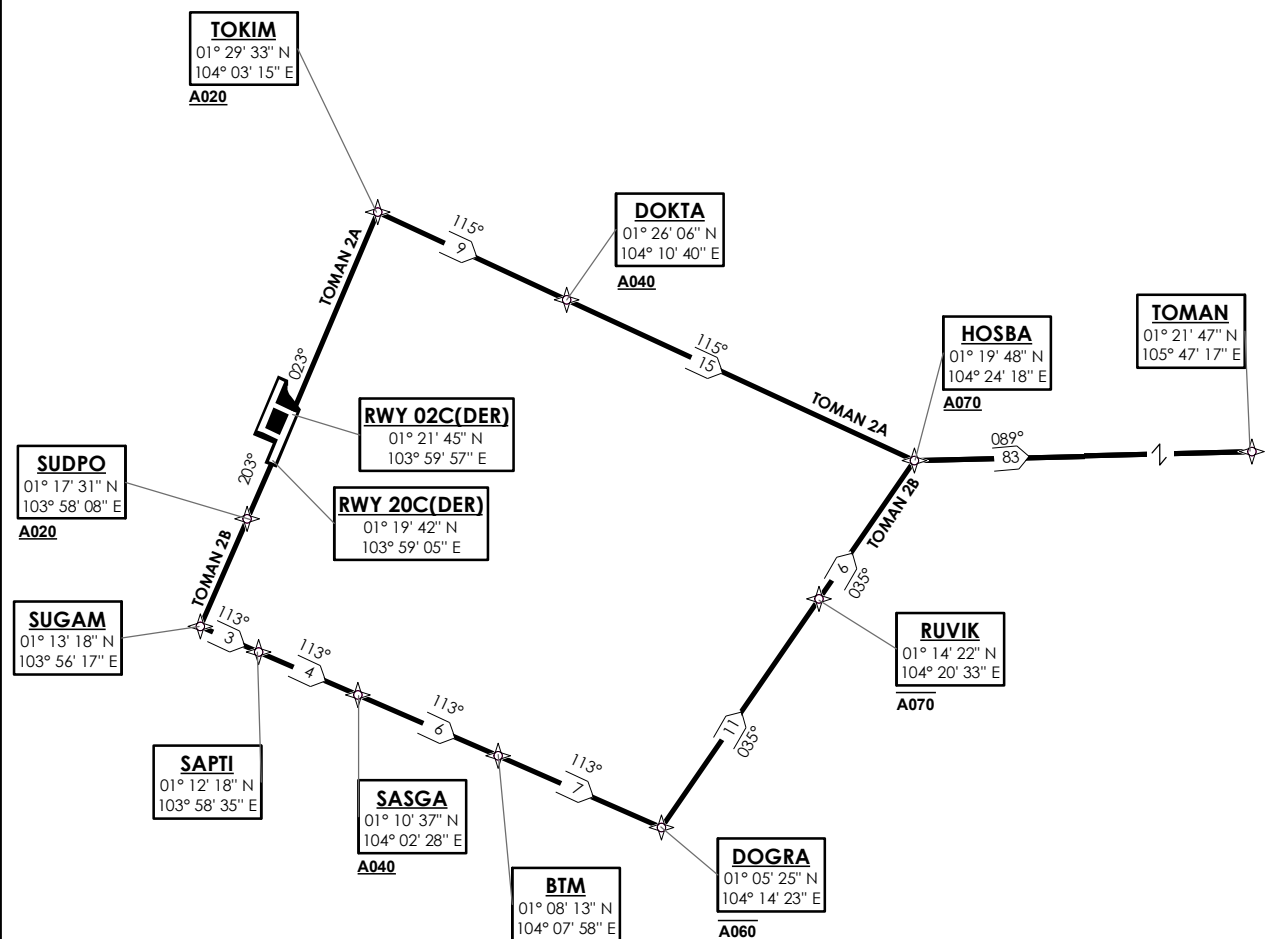
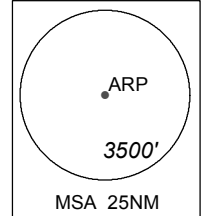
INITIAL CLIMB
3000FT OR AS DIRECTED BY ATC

ALL SIDs INCLUDE NOISE PREFERENTIAL ROUTES.

RWY 02C
IAS 230KTS UNTIL PASSING 4000FT AND
IAS 250KTS UNTIL PASSING 10000FT.
CRUISING LEVELS WILL BE ISSUED AFTER TAKE-OFF
BY SINGAPORE RADAR.
SEE (ENR 1.5-4) FOR MINIMUM CLIMB GRADIENT CRITERIA.

RWY 20C
IAS 230KTS UNTIL PASSING 4000FT AND
IAS 250KTS UNTIL PASSING 10000FT.
CRUISING LEVELS WILL BE ISSUED AFTER TAKE-OFF
BY SINGAPORE RADAR.
DEPARTURES SHALL BE ON A MINIMUM NET CLIMB GRADIENT OF 5%
UNTIL REACHING OR PASSING 400FT, THEREAFTER 3.3%.

GND SPEED - KNOTS	75	100	150	200	250	300
5% V/V (fpm)	380	506	760	1013	1266	1519
3.3% V/V (fpm)	251	334	501	668	835	1003



NOT TO SCALE

TOMAN 2A (SID) RNAV GNSS RWY 02C - DESCRIPTIONS

Formal & Abbreviated Descriptions

Formal Description	Abbreviated Description	Path Terminator	Fly-Over required
To TOKIM on course 023° at or above 2000ft, turn right. To DOKTA at or above 4000ft. To HOSBA at or above 7000ft, turn left. To TOMAN.	TOKIM [M023; A020+; R] -	CF	N
	DOKTA [A040+] -	TF	N
	HOSBA [A070+; L] -	TF	N
	TOMAN	TF	N

Tabular Descriptions

Path Term	Waypoint Name	Fly-Over	Course °M(°T)	Magnetic Variation	Turn Direction	Altitude	Speed Limit	Navigation Spec
CF	TOKIM	-	023(022.5)	-0.5	R	A020+	-	RNAV1
TF	DOKTA	-	115(114.5)	-0.5	-	A040+	-	RNAV1
TF	HOSBA	-	115(114.5)	-0.5	L	A070+	-	RNAV1
TF	TOMAN	-	089(088.5)	-0.5	-	-	-	RNAV1

TOMAN 2B (SID) RNAV GNSS RWY 20C - DESCRIPTIONS

Formal & Abbreviated Descriptions

Formal Description	Abbreviated Description	Path Terminator	Fly-Over required
To SUDPO on course 203° at or above 2000ft. To SUGAM, turn left. To SAPTI. To SASGA at or above 4000ft. To BTM. To DOGRA at or below 6000ft, turn left. To RUVIK at or below 7000ft. To HOSBA at or above 7000ft, turn right. To TOMAN.	SUDPO [M203; A020+] -	CF	N
	SUGAM [L] -	TF	N
	SAPTI -	TF	N
	SASGA [A040+] -	TF	N
	BTM -	TF	N
	DOGRA [A060-; L] -	TF	N
	RUVIK [A070-] -	TF	N
	HOSBA [A070+; R] -	TF	N
TOMAN	TF	N	

Tabular Descriptions

Path Term	Waypoint Name	Fly-Over	Course °M(°T)	Magnetic Variation	Turn Direction	Altitude	Speed Limit	Navigation Spec
CF	SUDPO	-	203(202.5)	-0.5	-	A020+	-	RNAV1
TF	SUGAM	-	203(202.5)	-0.5	L	-	-	RNAV1
TF	SAPTI	-	113(113.3)	-0.5	-	-	-	RNAV1
TF	SASGA	-	113(113.3)	-0.5	-	A040+	-	RNAV1
TF	BTM	-	113(113.3)	-0.5	-	-	-	RNAV1
TF	DOGRA	-	113(113.3)	-0.5	L	A060-	-	RNAV1
TF	RUVIK	-	035(034.5)	-0.5	-	A070-	-	RNAV1
TF	HOSBA	-	035(034.5)	-0.5	R	A070+	-	RNAV1
TF	TOMAN	-	089(088.5)	-0.5	-	-	-	RNAV1

RADIO COMMUNICATIONS FAILURE PROCEDURE

1	SET TRANSPONDER TO MODE A/C CODE 7600
2	COMMUNICATIONS FAILURE OCCURS IMMEDIATELY AFTER DEPARTURE ON: RWY 02C - PROCEED STRAIGHT AHEAD TO NYLON HOLDING AREA (NHA) CLIMBING TO THE LAST ASSIGNED ALTITUDE, THEREAFTER REFER TO SINGAPORE AIP ON RADIO COMMUNICATIONS FAILURE PROCEDURE. RWY 20C - PROCEED STRAIGHT AHEAD TO SAMKO HOLDING AREA (SHA) CLIMBING TO THE LAST ASSIGNED ALTITUDE, THEREAFTER REFER TO SINGAPORE AIP ON RADIO COMMUNICATIONS FAILURE PROCEDURE.

**STANDARD DEPARTURE CHART
RNAV (GNSS) -
INSTRUMENT (SID)**

TWR 118.6 / 118.25
APP 120.3
ACC 134.4

TRANSITION ALTITUDE
11 000ft

D-ATIS AP ID-WSSS
128.6

**SINGAPORE/Singapore Changi
RWY 02C/20C
VENIX DEPARTURES
VENIX 1A (R02C)
VENIX 1B (R20C)**

ELEV, ALT IN FEET
BEARINGS, TRACKS AND
RADIALS ARE MAGNETIC
VAR 26°E (2015)

DISTANCES IN NM

NOTE: RADAR REQUIRED

NOTE: ACFT UNABLE TO FLY THE SID
PROFILE SHALL INFORM ATC
PRIOR TO DEPARTURE AND TO
EXPECT RADAR VECTURING,
IF NECESSARY

NOTE: RNAV-1 NAVIGATION SPECIFICATION
GNSS REQUIRED

NOTE: REFER TO BACK PAGE FOR
- FORMAL AND TABULAR DESCRIPTIONS
- RADIO COM FAILURE PROCEDURES

GENERAL INFORMATION

**INITIAL CLIMB
3000FT OR AS DIRECTED BY ATC**

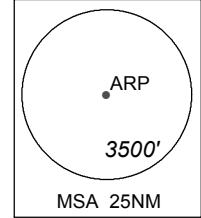
ALL SIDs INCLUDE NOISE PREFERENTIAL ROUTES.

RWY 02C

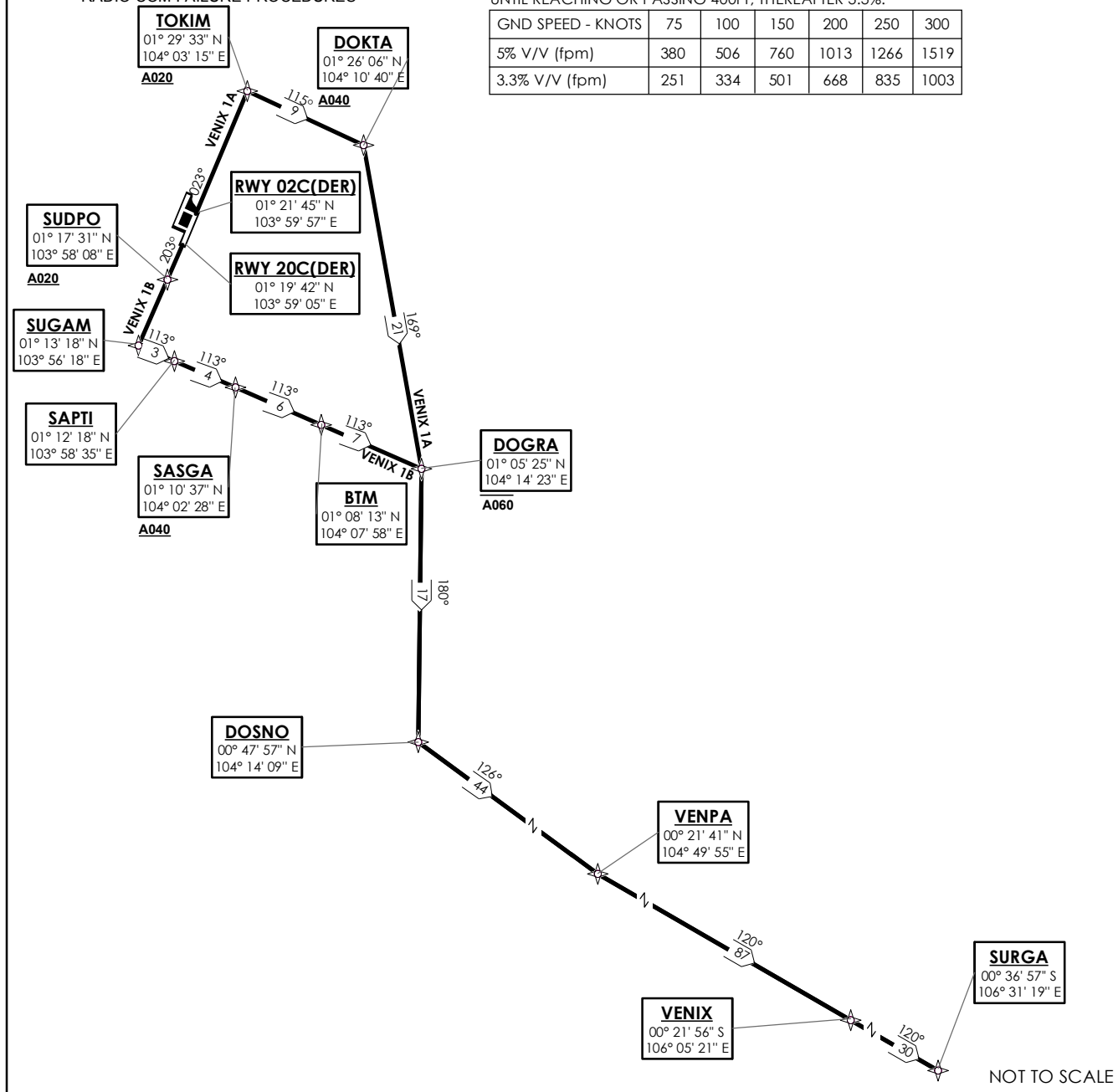
IAS 230KTS UNTIL PASSING 4000FT AND
IAS 250KTS UNTIL PASSING 10000FT.
CRUISING LEVELS WILL BE ISSUED AFTER TAKE-OFF
BY SINGAPORE RADAR.
SEE (ENR 1.5-4) FOR MINIMUM CLIMB GRADIENT CRITERIA.

RWY 20C

IAS 230KTS UNTIL PASSING 4000FT AND
IAS 250KTS UNTIL PASSING 10000FT.
CRUISING LEVELS WILL BE ISSUED AFTER TAKE-OFF
BY SINGAPORE RADAR.
DEPARTURES SHALL BE ON A MINIMUM NET CLIMB GRADIENT OF 5%
UNTIL REACHING OR PASSING 400FT, THEREAFTER 3.3%.



GND SPEED - KNOTS	75	100	150	200	250	300
5% V/V (fpm)	380	506	760	1013	1266	1519
3.3% V/V (fpm)	251	334	501	668	835	1003



NOT TO SCALE

VENIX 1A (SID) RNAV GNSS RWY 02C - DESCRIPTIONS

Formal & Abbreviated Descriptions

Formal Description	Abbreviated Description	Path Terminator	Fly-Over required
To TOKIM on course 023° at or above 2000ft., turn right. To DOKTA at or above 4000ft, turn right. To DOGRA at or below 6000ft, turn right. To DOSNO, turn left. To VENPA, turn left. To VENIX. To SURGA.	TOKIM [M023; A020+; R] -	CF	N
	DOKTA [A040+; R] -	TF	N
	DOGRA [A060-; R] -	TF	N
	DOSNO [L] -	TF	N
	VENPA [L] -	TF	N
	VENIX -	TF	N
	SURGA	TF	N

Tabular Descriptions

Path Term	Waypoint Name	Fly-Over	Course °M(°T)	Magnetic Variation	Turn Direction	Altitude	Speed Limit	Navigation Spec
CF	TOKIM	-	023(022.5)	-0.5	R	A020+	-	RNAV1
TF	DOKTA	-	115(114.5)	-0.5	R	A040+	-	RNAV1
TF	DOGRA	-	169(168.5)	-0.5	R	A060-	-	RNAV1
TF	DOSNO	-	180(179.5)	-0.5	L	-	-	RNAV1
TF	VENPA	-	126(125.5)	-0.5	L	-	-	RNAV1
TF	VENIX	-	120(199.5)	-0.5	-	-	-	RNAV1
TF	SURGA	-	120(199.5)	-0.5	-	-	-	RNAV1

VENIX 1B (SID) RNAV GNSS RWY 20C - DESCRIPTIONS

Formal & Abbreviated Descriptions

Formal Description	Abbreviated Description	Path Terminator	Fly-Over required
To SUDPO on course 203° at or above 2000ft. To SUGAM, turn left. To SAPTI. To SASGA at or above 4000ft. To BTM. To DOGRA at or below 6000ft, turn right. To DOSNO, turn left. To VENPA, turn left. To VENIX. To SURGA.	SUDPO [M203; A020+] -	CF	N
	SUGAM [L] -	TF	N
	SAPTI -	TF	N
	SASGA [A040+] -	TF	N
	BTM -	TF	N
	DOGRA [A060-; R] -	TF	N
	DOSNO [L] -	TF	N
	VENPA [L] -	TF	N
	VENIX -	TF	N
	SURGA	TF	N

Tabular Descriptions

Path Term	Waypoint Name	Fly-Over	Course °M(°T)	Magnetic Variation	Turn Direction	Altitude	Speed Limit	Navigation Spec
CF	SUDPO	-	203(202.5)	-0.5	-	A020+	-	RNAV1
TF	SUGAM	-	203(202.5)	-0.5	L	-	-	RNAV1
TF	SAPTI	-	113(113.3)	-0.5	-	-	-	RNAV1
TF	SASGA	-	113(113.3)	-0.5	-	A040+	-	RNAV1
TF	BTM	-	113(113.3)	-0.5	-	-	-	RNAV1
TF	DOGRA	-	113(113.3)	-0.5	R	A060-	-	RNAV1
TF	DOSNO	-	180(179.5)	-0.5	L	-	-	RNAV1
TF	VENPA	-	126(125.5)	-0.5	L	-	-	RNAV1
TF	VENIX	-	120(199.5)	-0.5	-	-	-	RNAV1
TF	SURGA	-	120(199.5)	-0.5	-	-	-	RNAV1

RADIO COMMUNICATIONS FAILURE PROCEDURE

1	SET TRANSPONDER TO MODE A/C CODE 7600
2	<p>COMMUNICATIONS FAILURE OCCURS IMMEDIATELY AFTER DEPARTURE ON:</p> <p>RWY 02C - PROCEED STRAIGHT AHEAD TO NYLON HOLDING AREA (NHA) CLIMBING TO THE LAST ASSIGNED ALTITUDE, THEREAFTER REFER TO SINGAPORE AIP ON RADIO COMMUNICATIONS FAILURE PROCEDURE.</p> <p>RWY 20C - PROCEED STRAIGHT AHEAD TO SAMKO HOLDING AREA (SHA) CLIMBING TO THE LAST ASSIGNED ALTITUDE, THEREAFTER REFER TO SINGAPORE AIP ON RADIO COMMUNICATIONS FAILURE PROCEDURE.</p>

**STANDARD DEPARTURE CHART
RNAV (GNSS) -
INSTRUMENT (SID)**

TWR 118.6 / 118.25
APP 120.3
ACC 133.8

TRANSITION ALTITUDE
11 000ft

D-ATIS AP ID-WSSS
128.6

**SINGAPORE/Singapore Changi
RWY 02C/20C
MERSING DEPARTURES
VMR 5A (R02C)
VMR 6B (R20C)**

ELEV, ALT IN FEET
BEARINGS, TRACKS AND
RADIALS ARE MAGNETIC
VAR 26°E (2015)

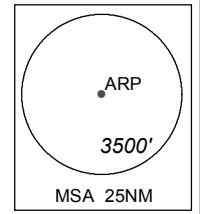
DISTANCES IN NM
NOTE: RADAR REQUIRED

**NOTE: ACFT UNABLE TO FLY THE SID
PROFILE SHALL INFORM ATC
PRIOR TO DEPARTURE AND TO
EXPECT RADAR VECTORED,
IF NECESSARY**

**NOTE: RNAV-1 NAVIGATION SPECIFICATION
GNSS REQUIRED**

**NOTE: REFER TO BACK PAGE FOR
- FORMAL AND TABULAR DESCRIPTIONS
- RADIO COM FAILURE PROCEDURES**

VMR
02° 23' 18" N
103° 52' 18" E



GENERAL INFORMATION

**INITIAL CLIMB
3000FT OR AS DIRECTED BY ATC**

ALL SIDs INCLUDE NOISE PREFERENTIAL ROUTES.

RWY 02C

IAS 230KTS UNTIL PASSING 4000FT AND
IAS 250KTS UNTIL PASSING 10000FT.
CRUISING LEVELS WILL BE ISSUED AFTER TAKE-OFF
BY SINGAPORE RADAR.
SEE (ENR 1.5-4) FOR MINIMUM CLIMB GRADIENT CRITERIA.

RWY 20C

IAS 230KTS UNTIL SASGA AND
IAS 250KTS UNTIL PASSING 10000FT.
CRUISING LEVELS WILL BE ISSUED AFTER TAKE-OFF
BY SINGAPORE RADAR.
DEPARTURES SHALL BE ON A MINIMUM NET CLIMB GRADIENT OF 5%
UNTIL REACHING OR PASSING 400FT, THEREAFTER 3.3%.

GND SPEED - KNOTS	75	100	150	200	250	300
5% V/V (fpm)	380	506	760	1013	1266	1519
3.3% V/V (fpm)	251	334	501	668	835	1003

RWY02C(DER)
01° 21' 45" N
103° 59' 57" E

RWY20C(DER)
01° 19' 42" N
103° 59' 05" E

SUDPO
01° 17' 31" N
103° 58' 08" E
A020

SUGAM
01° 13' 18" N
103° 56' 17" E

SAPTI
01° 12' 18" N
103° 58' 35" E

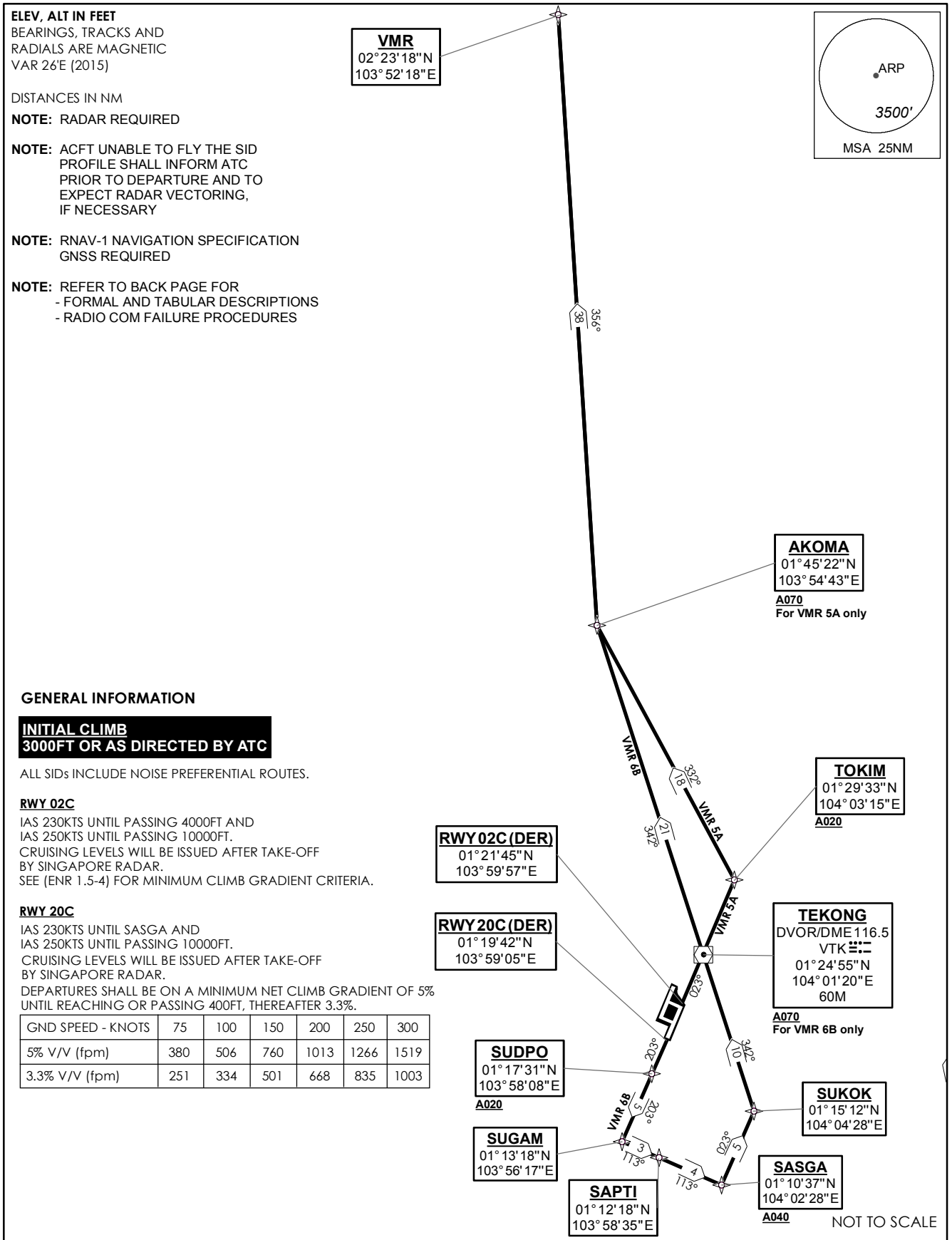
AKOMA
01° 45' 22" N
103° 54' 43" E
A070
For VMR 5A only

TOKIM
01° 29' 33" N
104° 03' 15" E
A020

TEKONG
DVOR/DME 116.5
VTK
01° 24' 55" N
104° 01' 20" E
60M
A070
For VMR 6B only

SUKOK
01° 15' 12" N
104° 04' 28" E

SASGA
01° 10' 37" N
104° 02' 28" E
A040



VMR 5A (SID) RNAV GNSS RWY 02C - DESCRIPTIONS

Formal & Abbreviated Descriptions

Formal Description	Abbreviated Description	Path Terminator	Fly-Over required
To TOKIM on course 023° at or above 2000ft, turn left. To AKOMA at or above 7000ft, turn right. To VMR.	TOKIM [M023; A020+; L] -	CF	N
	AKOMA [A070+; R] -	TF	N
	VMR	TF	N

Tabular Descriptions

Path Term	Waypoint Name	Fly-Over	Course °M(°T)	Magnetic Variation	Turn Direction	Altitude	Speed Limit	Navigation Spec
CF	TOKIM	-	023(022.5)	-0.5	L	A020+	-	RNAV1
TF	AKOMA	-	332(331.5)	-0.5	R	A070+	-	RNAV1
TF	VMR	-	356(355.5)	-0.5	-	-	-	RNAV1

VMR 6B (SID) RNAV GNSS RWY 20C - DESCRIPTIONS

Formal & Abbreviated Descriptions

Formal Description	Abbreviated Description	Path Terminator	Fly-Over required
To SUDPO on course 203° at or above 2000ft. To SUGAM, turn left. To SAPTI. To SASGA at or above 4000ft, speed 230kts, turn left. To SUKOK, turn left. To VTK at or above 7000ft. To AKOMA, turn right. To VMR.	SUDPO [M203; A020+] -	CF	N
	SUGAM [L] -	TF	N
	SAPTI -	TF	N
	SASGA [A040+; K230; L] -	TF	N
	SUKOK [L] -	TF	N
	VTK [A070+] -	TF	N
	AKOMA [R] -	TF	N
VMR	TF	N	

Tabular Descriptions

Path Term	Waypoint Name	Fly-Over	Course °M(°T)	Magnetic Variation	Turn Direction	Altitude	Speed Limit	Navigation Spec
CF	SUDPO	-	203(202.5)	-0.5	-	A020+	-	RNAV1
TF	SUGAM	-	203(202.5)	-0.5	L	-	-	RNAV1
TF	SAPTI	-	113(113.3)	-0.5	-	-	-	RNAV1
TF	SASGA	-	113(113.3)	-0.5	L	A040+	K230	RNAV1
TF	SUKOK	-	023(023.6)	-0.5	L	-	-	RNAV1
TF	VTK	-	342(341.5)	-0.5	-	A070+	-	RNAV1
TF	AKOMA	-	342(341.5)	-0.5	R	-	-	RNAV1
TF	VMR	-	356(355.5)	-0.5	-	-	-	RNAV1

RADIO COMMUNICATIONS FAILURE PROCEDURE

1	SET TRANSPONDER TO MODE A/C CODE 7600
2	<p>COMMUNICATIONS FAILURE OCCURS IMMEDIATELY AFTER DEPARTURE ON:</p> <p>RWY 02C - PROCEED STRAIGHT AHEAD TO NYLON HOLDING AREA (NHA) CLIMBING TO THE LAST ASSIGNED ALTITUDE, THEREAFTER REFER TO SINGAPORE AIP ON RADIO COMMUNICATIONS FAILURE PROCEDURE.</p> <p>RWY 20C - PROCEED STRAIGHT AHEAD TO SAMKO HOLDING AREA (SHA) CLIMBING TO THE LAST ASSIGNED ALTITUDE, THEREAFTER REFER TO SINGAPORE AIP ON RADIO COMMUNICATIONS FAILURE PROCEDURE.</p>