

Telephone: (65) 6595 6051  
AFS: WSSSYNYX  
Facsimile: (65) 6441 0221  
caas\_singaporeais@caas.gov.sg  
www.caas.gov.sg

REPUBLIC OF SINGAPORE  
AERONAUTICAL INFORMATION SERVICES  
CIVIL AVIATION AUTHORITY OF SINGAPORE  
SINGAPORE CHANGI AIRPORT  
P.O. BOX 1, SINGAPORE 918141

AIP SUPPLEMENT

166/15  
6TH NOVEMBER

## FLYING DISPLAY IN CONJUNCTION WITH THE SINGAPORE AIRSHOW 2016 EXHIBITION FROM WEDNESDAY 10 FEBRUARY TO SUNDAY 21 FEBRUARY 2016

### 1. INTRODUCTION

- 1.1 Flying displays will be conducted daily during the Singapore Airshow 2016 Exhibition from 16, 17, 18, 20 and 21 February 2016. Individual practices will be conducted from 10 to 13 February 2016 and combined rehearsals on 14 February 2016, with a back-up date on 15 February 2016.
- 1.2 Details of the periods of Singapore Changi Airport and airspace closures are shown in **Annex A**.

### 2. DEFINITION

- 2.1 The airspace to be closed is bounded by the following coordinates (see Annex B):

012517N 1035814E, thence clockwise along the Singapore / Kuala Lumpur FIR boundary, 012017N 1040522E, 011707N 1035618E, 011835N 1035658E, thence anti-clockwise along the eastern coastline of Singapore, 012254N 1035707E and 012517N 1035814E.

Vertical limits: Ground / Sea Level – 10,000ft.

### 3. RESTRICTIONS AND CLOSURES OF SINGAPORE CHANGI AIRPORT AND AIRSPACE

- 3.1 During the periods of practices, rehearsals and actual flying displays, Singapore Changi Airport and the airspace as shown in **Annex B** will be closed to non-participating aircraft.
- 3.2 It is anticipated that there would be many flights arriving and departing from Singapore Changi Airport shortly before each airport and airspace closure period. To avoid the possibility of flights being delayed until after the airport and airspace are re-opened, aircraft operators are advised to plan their flights to arrive or depart Singapore Changi Airport well before the closure times listed in **Annex A**.

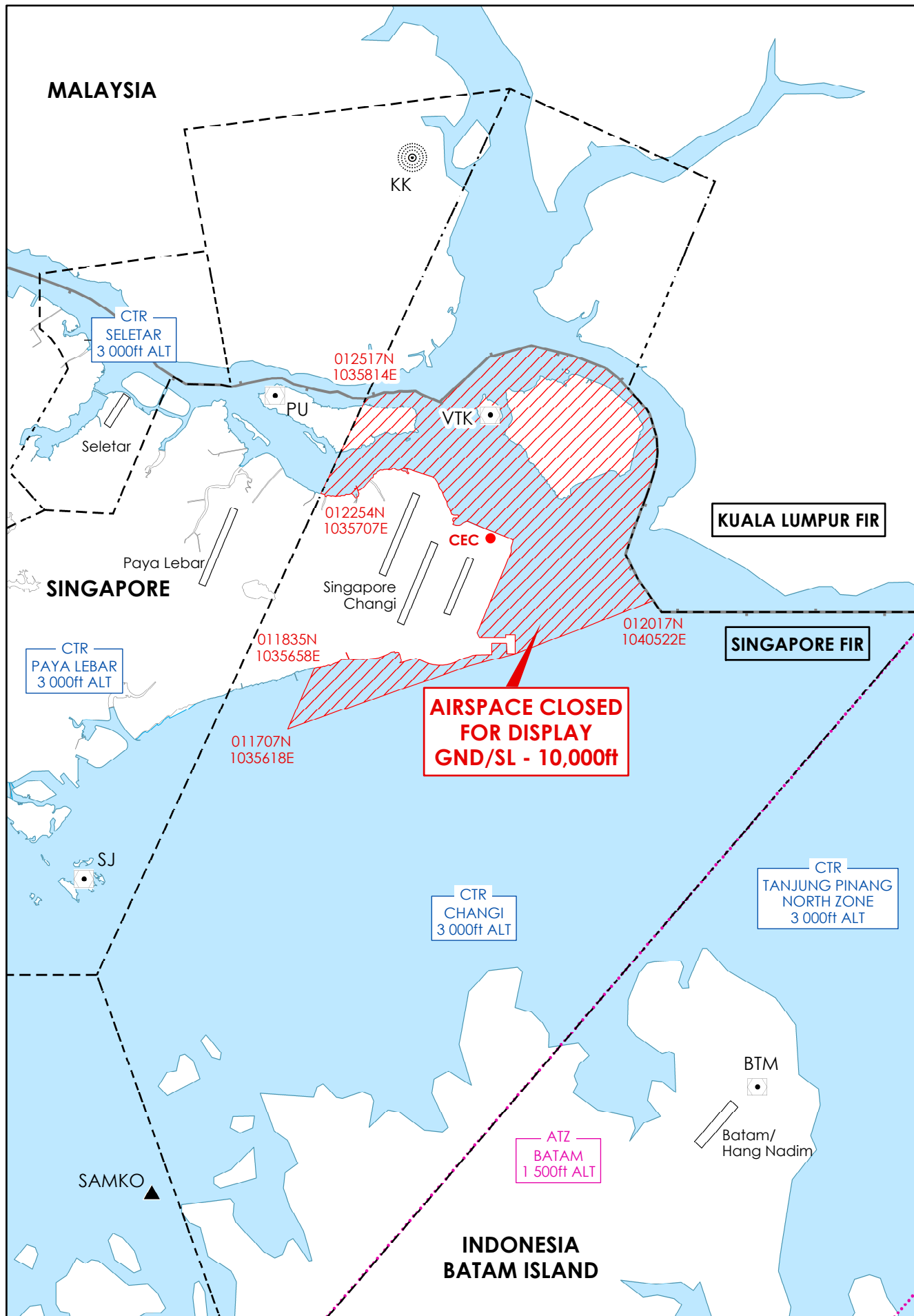
- 3.3 For the last 15 minutes prior to the closures of Singapore Changi Airport, priority will be given to Changi arrivals where arrivals will be allowed to land on both runways.
- 3.4 For the first 15 minutes following Singapore Changi Airport's re-opening, priority will be given to Changi arrivals where arrivals will be allowed to land on both runways while departures will depart on Runway 02C/20C only. Segregated mode of operations will resume thereafter.

**Closure of Singapore Changi Airport and airspace during the  
Singapore Airshow 2016 Exhibition Flying Displays**

Details of closures of Singapore Changi Airport and airspace are shown below:

Type of Activity		Day / Date	Timing (UTC)
a)	Practices	Wednesday, 10 Feb 16	0215 – 0245
		Thursday, 11 Feb 16	0215 - 0325
		Friday, 12 Feb 16	0215 – 0255
		Saturday, 13 Feb 16	0215 – 0255
b)	Combined Rehearsal	Sunday, 14 Feb 16	0215 – 0325
	Combined Rehearsal (back-up)	Monday, 15 Feb 16	0215 – 0315
c)	Flying Displays	Tuesday, 16 Feb 16	0430 – 0540
		Wednesday, 17 Feb 16	0330 – 0430
		Thursday, 18 Feb 16	0330 – 0430
		Friday, 19 Feb 16	NIL
		Saturday, 20 Feb 16	0230 – 0310
			0620 – 0700
		Sunday, 21 Feb 16	0230 – 0310
			0620 – 0700

# SINGAPORE AIRSHOW 2016 EXHIBITION AIRSPACE CLOSURE FOR FLYING DISPLAYS



Singapore\_Airshow\_2016.mxd