

Telephone: (65) 6595 6051
AFS: WSSSYNYX
Facsimile: (65) 6441 0221
caas_singaporeais@caas.gov.sg
www.caas.gov.sg

REPUBLIC OF SINGAPORE
AERONAUTICAL INFORMATION SERVICES
CIVIL AVIATION AUTHORITY OF SINGAPORE
SINGAPORE CHANGI AIRPORT
P.O. BOX 1, SINGAPORE 918141

AIP SUPPLEMENT

2/16
18TH FEBRUARY

WORKS SCHEDULE AND MOVEMENT AREA RESTRICTIONS PERTAINING TO RUNWAY RESURFACING WORKS, DIVERSION OF AIRSIDE SERVICES AND SOIL IMPROVEMENT WORKS AT SINGAPORE CHANGI AIRPORT

1. INTRODUCTION

- 1.1. This AIP Supplement is to update the aviation industry of the works schedule and movement areas restrictions at Singapore Changi Airport for the period from 26 March 2016 2201UTC to 29 October 2016 2200UTC due to the on-going upgrading programme to resurface the runway, divert the airside services infrastructure and carry out soil improvement works and other associated works.

2. CONSTRUCTION ZONES FOR AIRSIDE SERVICES DIVERSION

- 2.1. Please refer to **Appendix A** for the location of the construction works zones.

3. CONSTRUCTION ZONES FOR SOIL IMPROVEMENT

- 3.1. Please refer to **Appendix B** for the location of the construction works zones.

4. RUNWAY 02L/20R and Runway 02C/20C RESURFACING WORKS

- 4.1 Runway 02L/20R and Runway 02C/20C resurfacing works will take place during the runway closure for works and maintenance between 1630UTC and 2200UTC on the dates specified in paragraph 5.1.
- 4.2 In the event of an emergency, Runway 02L/20R and Runway 02C/20C will be reopened upon notification based on the following stipulated timings:
- (i) Between 1630 and 1930 runway will be re-opened within 120 minutes;
 - (ii) Between 1930 and 2100 runway will be re-opened by 2130UTC; and
 - (iii) Between 2100 and 2130 runway will be re-opened within 30 minutes.

5. LONG CLOSURES OF RUNWAY 02L/20R and RUNWAY 02C/20C

5.1 Runway 02L/20R and Runway 02C/20C will be closed between 1630UTC and 2200UTC nightly from 26 March 2016 to 29 October 2016 for works and maintenance as follows:

Month	Runway 02L/20R	Runway 02C/20C
March 2016	28 and 31.	26, 27, 29 and 30.
April 2016	4, 7, 11, 14, 18, 21, 25 and 28.	1, 2, 3, 5, 6, 8, 9, 10, 12, 13, 15, 16, 17, 19, 20, 22, 23, 24, 26, 27, 29 and 30.
May 2016	2, 5, 9, 12, 16, 19, 23, 26 and 30.	1, 3, 4, 6, 7, 8, 10, 11, 13, 14, 15, 17, 18, 20, 21, 22, 24, 25, 27, 28, 29 and 31.
June 2016	2, 6, 9, 13, 16, 20, 23, 27 and 30.	1, 3, 4, 5, 7, 8, 10, 11, 12, 14, 15, 17, 18, 19, 21, 22, 24, 25, 26, 28 and 29.
July 2016	4, 7, 11, 14, 18, 21, 25 and 28.	1, 2, 3, 5, 6, 8, 9, 10, 12, 13, 15, 16, 17, 19, 20, 22, 23, 24, 26, 27, 29, 30 and 31.
August 2016	1, 4, 8, 11, 15, 18, 22, 25 and 29.	2, 3, 5, 6, 7, 9, 10, 12, 13, 14, 16, 17, 19, 20, 21, 23, 24, 26, 27, 28, 30 and 31.
September 2016	1, 5, 8, 12, 15, 19, 22, 26 and 29.	2, 3, 4, 6, 7, 9, 10, 11, 13, 14, 16, 17, 18, 20, 21, 23, 24, 25, 27, 28 and 30.
October 2016	3, 6, 10, 13, 17, 20, 24 and 27.	1, 2, 4, 5, 7, 8, 9, 11, 12, 14, 15, 16, 18, 19, 21, 22, 23, 25, 26, 28 and 29.

5.2 For Runway 02C/20C closure from 1630UTC to 2200UTC, Taxiway EP between Taxiway L9 and Taxiway E11 will also be closed due to work in progress.

6. SHORT CLOSURES OF RUNWAY 02L/20R and RUNWAY 02C/20C

- 6.1 Reference to AIP Singapore section WSSS AD 2.12 item 12, paragraphs 1b) and 2b), short maintenance closure of 5 minutes which are scheduled to be conducted daily between 2300-2305 and 2320-2325 on Runway 02L/20R and Runway 02C/20C respectively, will be replaced by a 15 minutes maintenance closure, depending on which runway is closed. The table below shows the details and the maintenance closure timing for each runway.

Closure of RWY on dates specified in paragraph 5.1	Cancellation of 5 minutes RWY maintenance closure	Addition of 15 minutes RWY maintenance closure
RWY 02L/20R 1630-2200	RWY 02C/20C 2320-2325	RWY 02C/20C 2315-2330
RWY 02C/20C 1630-2200	RWY 02L/20R 2300-2305	RWY 02L/20R 2300-2315

7. MARKING AND LIGHTING

- 7.1 All unserviceable areas on taxiways or aprons will be demarcated by marker boards. The marker boards will be painted in alternate bands of red and white, and will be lighted at night and during limited visibility conditions by omni-directional fixed red lights.
- 7.2 All unserviceable areas 105m from Runway 02C/20C centreline will be demarcated by marker boards placed parallel to Runway 02C/20C (refer to Appendix A). The marker boards will be painted in alternate bands of red and white.

8. PRECAUTIONS

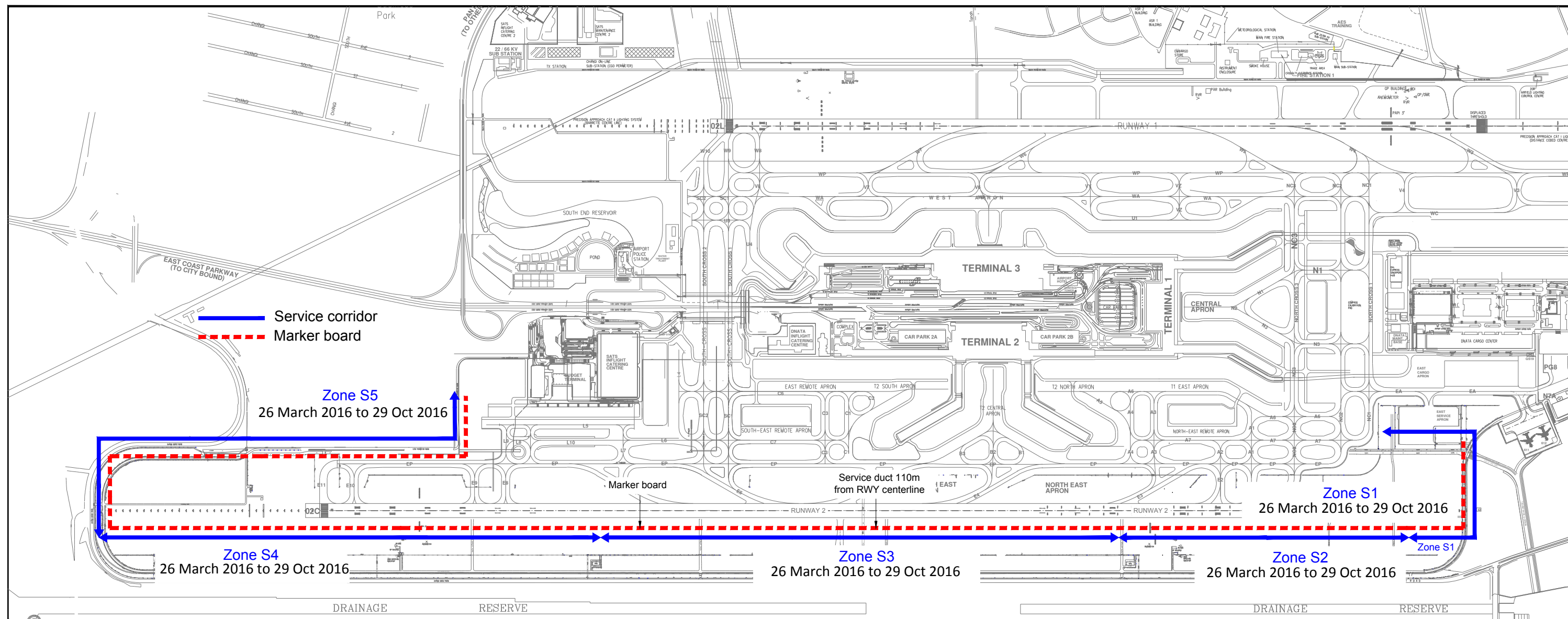
- a. During the construction period, pilots are to take note of the following at the work areas as shown in **Appendices A and B**:
- a) Presence of construction equipment beyond 105m from Runway 02C/20C centreline and on the northern and southern ends of Runway 02C/20C threshold.
 - b) All construction equipment will be kept clear of the obstacle free zone when Runway 02C/20C is operational.
 - c) Emergency response and evacuation plan (for removal of machinery and manpower) will be in place in case of any airport emergency.

- d) Runway 02C/20C will be closed between 1630UTC and 2200UTC on the dates specified in paragraph 5.1. All aircraft operators operating during these periods are to plan to carry sufficient contingency fuel as only one runway will be available.

9. CHANGES

- a. Any changes to the contents of this AIP Supplement will be notified through NOTAM.

Airside Services Diversion Construction Works Zones



Soil Improvement Work Construction Phases and Locations

