

**Contact**

Post:

REPUBLIC OF SINGAPORE  
AERONAUTICAL  
INFORMATION SERVICES  
CIVIL AVIATION AUTHORITY  
OF SINGAPORE  
SINGAPORE CHANGI  
AIRPORT  
P.O. BOX 1, SINGAPORE  
918141

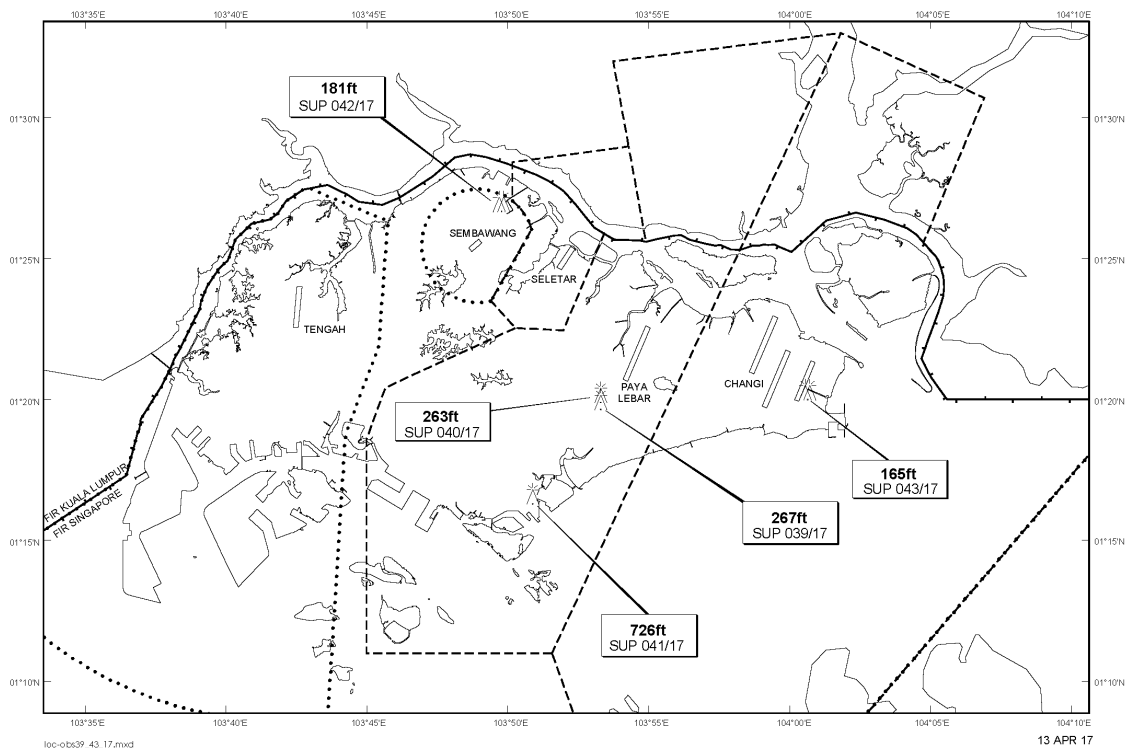
Tel: (65) 6595 6051

AFS: WSSSYNYX

Fax: (65) 64410221

Email: [caas\\_singaporeais@caas.gov.sg](mailto:caas_singaporeais@caas.gov.sg)URL: [www.caas.gov.sg](http://www.caas.gov.sg)URL: <https://fpl-1.caasaim.gov.sg>**AIP Supplement for  
Singapore****AIP SUP  
039/2017****Effective from 13 APR 2017****/ 30 MAY 2017****Published on 13 APR 2017****PAYA LEBAR AIRPORT – MOBILE CRANE**

WIE/1705301559 one mobile crane, height 267ft AMSL, erected at 012000N 1035318E (bearing 218.1 degrees, distance 1.4nm from Paya Lebar ARP - within Paya Lebar CTR). Mobile crane marked and lighted at night. (NOTAM A0812/17 dated 24/03/17 is hereby superseded.)

**LOCATION OF OBSTACLES**

*PAGE INTENTIONALLY LEFT BLANK*