

Contact

Post:

REPUBLIC OF SINGAPORE
AERONAUTICAL
INFORMATION SERVICES
CIVIL AVIATION AUTHORITY
OF SINGAPORE
SINGAPORE CHANGI
AIRPORT
P.O. BOX 1, SINGAPORE
918141

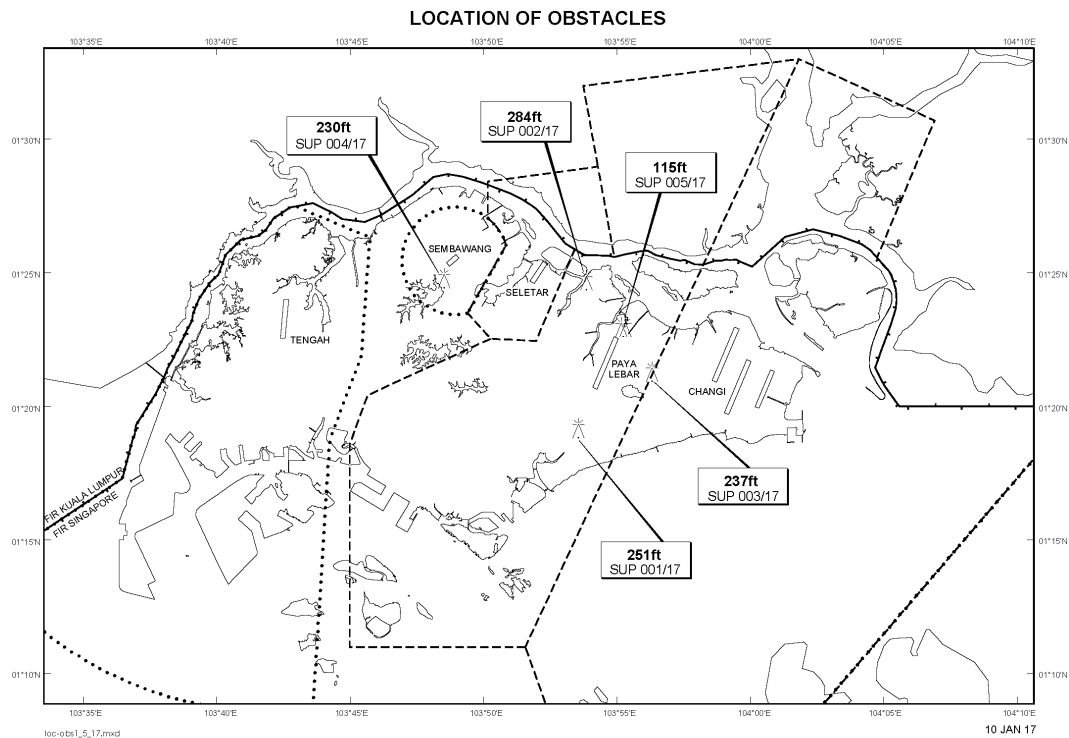
Tel: (65) 6595 6051

AFS: WSSSYNYX

Fax: (65) 64410221

Email: caas_singaporeais@caas.gov.sgURL: www.caas.gov.sgURL: <https://fpl-1.caasaim.gov.sg>**AIP Supplement for
Singapore****AIP SUP
004/2017****Effective from 10 JAN 2017****/ 31 MAR 2017****Published on 10 JAN 2017****SEMBAWANG AERODROME – CRAWLER CRANE**

WIE/1703311559 one crawler crane, height 230ft AMSL, erected at 012448N 1034831E (bearing 210 degrees, distance 0.9nm from Sembawang ARP - within Sembawang ATZ). Crawler crane marked and lighted at night. (NOTAM A2241/16 dated 16/09/16 is hereby superseded.)



PAGE INTENTIONALLY LEFT BLANK