

Telephone: (65) 6595 6051
AFS: WSSSYNYX
Facsimile: (65) 6441 0221
caas_singaporeais@caas.gov.sg
www.caas.gov.sg

REPUBLIC OF SINGAPORE
AERONAUTICAL INFORMATION SERVICES
CIVIL AVIATION AUTHORITY OF SINGAPORE
SINGAPORE CHANGI AIRPORT
P.O. BOX 1, SINGAPORE 918141

AIP SUPPLEMENT

40 / 16
23RD MARCH

**AIRSPACE CLOSURE KUALA LUMPUR AND SINGAPORE FIRs
EXERCISE BERSAMA SHIELD 16
210001UTC to 281100UTC APRIL 2016**

1. INTRODUCTION

- 1.1 Exercise BERSAMA SHIELD 16 (BS 16) will take place within the Kuala Lumpur and Singapore FIRs from 210001UTC to 281100UTC April 2016. The Exercise Airspace is split into four main Areas A to D, a Low Flying Area, specific Air Corridors, two permanent Restricted Areas, and a Naval Firing / Air-to-Air Engagement Area. These areas will be active according to planned periods of intense aerial activities but released back to civil ATC when not required by military exercise traffic. Civil and non-exercise military aircraft can continue to operate unrestricted within the non-exercise airspace as set out in paragraph 7 **except** during periods of Special Activity set out in paragraph 3.
- 1.2 All exercise airspace will be active during the Air Defence Exercise (ADEX) intense aerial activity which is limited to two 3-hour windows from 0100UTC to 0400UTC and 0530UTC to 0830UTC daily for the period of 21 to 28 April 2016. All Exercise Airspace will be active during the ADEX. Thereafter, all exercise airspace is released back to civil ATC **except** Area B, the Naval Firing / Air-to-Air Engagement Area and the permanent Restricted Areas. Area B and the Naval Firing / Air-to-Air Engagement Area will be released separately according to planned exercise activity.
- 1.3 Special Activity will take place between 270315UTC and 270345UTC April 2016. This activity will impose additional restrictions on air activity in the vicinity of Singapore Changi Airport. Further details on both ADEX and Special Activity restrictions are provided at paragraph 3.

2. EXERCISE AIRSPACE

- 2.1 Headquarters Integrated Area Defence System (HQIADS) under the Five Power Defence Arrangements (FPDA) shall be the coordinating authority for the exercise airspace. Outside the ADEX windows, HQIADS will release Area B to the relevant civil aviation authorities when not required for exercise purposes.

2.2 The exercise areas encompass portions of both the Kuala Lumpur and Singapore FIRs, as described below and depicted at Charts 1 through 7 to this AIP Supplement.

	Area (Boundary)	Vertical Limit
2.2.1	<p>Area A 024656N 1024117E, 035620N 1013940E, 035116N 1012643E, thence to 040920N 1011623E, then anti-clockwise along the Ipoh CTR boundary to 050020N 1005800E, 050000N 1005200E, 050700N 1000600E, then including the Butterworth CTR centred on BTR (052818N 1002342E) to 054300N 1002900E, 052606N 1010424E, 054600N 1014630E, then along the Kuala Lumpur / Bangkok FIR boundary to 063000N 1023000E, 063000N 1024000E, 053320N 1025400E, then clockwise along the east coast of Peninsular Malaysia, excluding all controlled airspace (Kota Bharu TMA, Kuala Terengganu CTR, Kerteh CTR) to 031240N 1032641E, then to 024656N 1024117E.</p>	5,000FT to 12,000FT
2.2.2	<p>Area B 063000N 1024000E, 063000N 1050000E, 060700N 1054900E, 054000N 1054700E, 050500N 1052900E, 040300N 1045200E, 035000N 1044700E, 025500N 1045200E, 022300N 1050100E, 015400N 1050500E, 013800N 1045300E, 013000N 1043600E, 013000N 1042000E, 020000N 1042000E, 020000N 1041700E, 022203N 1041700E, thence along the 59 DME VTK arc to 022221N 1034642E, 022703N 1034603E, 031240N 1032641E, thence clockwise along the east coast of Peninsular Malaysia, excluding all controlled airspace (Kota Bharu TMA, Kuala Terengganu CTR, Kerteh CTR) to 053320N 1025400E, then to 063000N 1024000E.</p>	See below
	<p>Area B (Sector 1) Between 59 DME VTK and 90 DME PU (lower section) *Note: Refer to paragraph 3 for variation in vertical limit during Special Activity period.</p>	SFC to FL140*
	<p>Area B (Sector 2) Between 59 DME VTK and 90 DME PU (upper section)</p>	FL330 to FL460
	<p>Area B (Sector 3) Between 90 DME PU and 150 DME PU *Note: Refer to paragraph 3 for variation in vertical limit during Special Activity period.</p>	SFC to FL230*
	<p>Area B (Sector 4) North of 150 DME PU *Note: Refer to paragraph 3 for variation in vertical limit during Special Activity period.</p>	SFC to FL250*
2.2.3	<p>Area C 011300N 1040500E, 011300N 1035300E, SINJON, 011000N 1033000E, 012000N 1030900E, 013900N 1021000E, 022927N 1025643E, 024656N 1024117E, 031240N 1032641E, 022703N 1034603E, 013303N 1035204E, then to 011300N 1040500E. Note: Refer to paragraph 7 for airspace within Area C that is designated as civil controlled airspace.</p>	5,000FT to FL290

	Area (Boundary)	Vertical Limit
2.2.4	Area D 022203N 1041700E, 020000N 1041700E, 020000N 1042000E, 013000N 1042000E, 013000N 1043600E, 011700N 1043700E, 011530N 1042424E, 011310N 1040615E, 011300N 1040500E, 013303N 1035204E, 022221N 1034642E thence clockwise along the 59 DME VTK arc to 022203N 1041700E.	SFC to FL190
2.2.5	Low Flying Area (LFA). 015200N 1024900E, 020000N 1025800E, 021100N 1030000E, 021600N 1030300E, 022300N 1031300E, 022200N 1032330E, 021900N 1033000E, 023130N 1035000E, thence north along the east coast of Peninsular Malaysia to 053320N 1025400E, 052450N 1015000E, 040000N 1015000E, 032512N 1020735E, 022927N 1025643E, 020453N 1023402E, 015900N 1023700E to 015200N 1024900E, excluding all controlled airspace (Kota Bharu TMA, Kuala Terengganu CTR, Kerteh CTR). Note: Permanent Danger Area WMD221, SFC to 10,000FT, is located adjacent to the Military Low Flying Area (LFA). Pilots are to exercise caution when operating in the vicinity of Danger Area WMD221.	250FT to 5,000FT
2.2.6	Naval Firing Area (NFA) / Air-to-Air Engagement Area (AAEA) 023000N 1041700E, 023000N 1051445E, 020000N 1052600E, 020000N 1053000E, 014500N 1053000E, 013000N 1043600E, 013000N 1043500E, 015224N 1042000E, 020000N 1042000E, 020000N 1041700E, 023000N 1041700E. Note: Area can be activated for either naval firing activities or air-to-air engagements.	SFC to FL550
2.2.7	Permanent Restricted Area WMR109 Note: Permanent Restricted Area WMR109 as promulgated in AIP Malaysia page ENR 5.1-5 will be activated for air-to-air activities.	8,000FT to FL500
2.2.8	Permanent Restricted Area WMR102B Note: Permanent Restricted Area WMR102B as promulgated in AIP Malaysia page ENR 5.1-3 will be activated for air-to-air activities.	SFC to FL370
2.2.9	Coastal Corridor West (CCW) 012306N 1034218E, 015900N 1023700E, 014000N 1023100E, 011600N 1033100E, 011518N 1034006E to 012306N 1034218E.	250FT to 5,000FT
2.2.10	Tengah Scramble Corridor (TSC) 012857N 1033422E, 013212N 1033808E, 012622N 1034515E, 012058N 1034452E, 012136N 1033954E, 012403N 1034013E and 012857N 1033422E. Note: All departing aircraft must be at or above 3,000FT by 3 DME and above 5,000FT by 10 DME from Tengah TACAN.	SFC to 5,000FT
2.2.11	Coastal Corridor East (CCE) 014224N 1042524E, 013324N 1040230E, 012530N 1035930E, 012124N 1040018E, 013300N 1043018E to 014224N 1042524E. Note: Activated only from 270315UTC to 270345UTC April 2016 during the Special Activity period.	250FT to 5,000FT

- 2.3 Where the boundaries of the exercise areas coincide with the boundaries of Bangkok FIR and Jakarta FIR, exercise military traffic is to observe a 10NM lateral buffer.
- 2.4 Civil and non-exercise aircraft may operate up to the limits of the non-exercise airspace. Exercise aircraft will maintain a vertical buffer of 1,000FT and a lateral buffer of 5NM from the airspace released for civil use except when operating within the corridors described in paragraphs 2.2.9, 2.2.10 and 2.2.11 (CCW, TSC and CCE).

3 ADEX WINDOW AND SPECIAL ACTIVITY PERIOD

- 3.1 ADEX Window 1 active daily between 0100UTC to 0400UTC:
 - i. Airway Y339 suspended. (Refer to paragraph 4.1 for alternate route.)
 - ii. Vertical limit of Area B for civil use, between 59 DME VTK and 90 DME PU, will be from FL180 to FL320.
 - iii. Vertical limit of ATS Route A464 between SJ and 70 DME SJ for civil use will be from FL140 to FL260.
- 3.2 ADEX Window 2 active daily between 0530UTC and 0830UTC:
 - i. Airway Y339 suspended. (Refer to paragraph 4.1 for alternate route.)
 - ii. Vertical limit of ATS Route A464 between SJ and 70 DME SJ for civil use will be from FL140 to FL260.
- 3.3 Special Activity will take place from 270315UTC to 270345UTC April 2016. The following airport / airspace will be closed to non-exercise aircraft:
 - i. Singapore Changi Airport;
 - ii. Seletar / Paya Lebar CTRs;
 - iii. Sembawang ATZ; and
 - iv. Singapore Light Aircraft Training Areas A, B and C.

4 SUSPENSION OF OPERATIONS ON SEGMENTS OF ATS ROUTES

- 4.1 All aircraft movements within the following ATS route segments will be temporarily suspended throughout the exercise period. Flights which would normally flight plan to operate along these route segments will plan via the alternate routes instead:

	ATS Route	Affected Segment	Alternate Route	Period Affected
4.1.1	A224	VJB to VMR	VJB AKOMA B469 VMR	Daily from 0100UTC to 0400UTC and 0530UTC to 0830UTC
4.1.2	B466	VJB to VBA	A457	Daily from 0100UTC to 0400UTC and 0530UTC to 0830UTC

	ATS Route	Affected Segment	Alternate Route	Period Affected
4.1.3	G334	SAROX to BUNTO	G584 VPK M761	Entire duration of exercise period
4.1.4	W651	VJB to KK	G579 JB KK	Entire duration of exercise period
4.1.5	Y339	AROSO to GEMAS	A457	Daily from 0100UTC to 0400UTC and 0530UTC to 0830UTC

5 REQUEST FOR CLEARANCES INTO EXERCISE AIRSPACE

- 5.1 Civil and non-exercise aircraft operating into and out of airports in Peninsular Malaysia and Singapore via established ATS routes which intend to operate in the active exercise areas, shall be permitted to operate subject to prior coordination. Pilots of such flights shall conform strictly to the ATC clearances issued before entering the active exercise areas. Any clearance into the exercise area will automatically expire if the aircraft cannot remain within 10 minutes of the flight planned ETDs and ETAs.
- 5.2 Civil and non-exercise aircraft requiring clearance into the exercise airspace should submit a flight plan and inform BS 16 Airspace Cell at HQIADS and SATCC at least six hours prior to departure. Submission of flight plan, either by email or fax, will be via the relevant AIS office / operator. The Airspace Cell will process these request(s) and endeavour to approve the flight plan or provide a de-conflicted slot time. BS 16 Airspace Cell will then pass this information to the operator and SATCC for approval / rejection dissemination. **Any queries should be directed to the BS 16 Airspace Cell at HQIADS.**
- 5.3 In the event that the request for clearance into the exercise airspace has been approved by BS 16 Airspace Cell, operator shall enter this information under item 18 OTHER INFORMATION "RMK/BS16A" when submitting actual flight plan.

6 INTERCEPTION AND IDENTIFICATION OF NON-EXERCISE AIRCRAFT

- 6.1 All non-exercise SSR transponder-equipped aircraft when operating in the Kuala Lumpur and Singapore FIRs during the exercise period shall have their transponders set to their allocated SSR codes, or if a code has not been allocated, they should set Mode 3/A Code 2000.
- 6.2 Civil and non-exercise military aircraft entering or transiting the active exercise areas may be intercepted for the purpose of identification. An aircraft which is intercepted by another aircraft shall act in accordance to the instructions published in the AIPs (Malaysia page ENR 1.12 / Singapore page ENR 1.12).
- 6.3 Civil and non-exercise military aircraft experiencing an emergency that necessitates them entering an active exercise area should immediately advise the appropriate ATC agency so that necessary action can be taken to co-ordinate a safe entry into the area.

7 CIVIL CONTROLLED AIRSPACE WITHIN EXERCISE AREAS

7.1 Unless otherwise specified, the following ATS routes and controlled airspace within the Exercise Areas are available as civil controlled airspace throughout the entire period of the exercise:

	ATS Route	Segment	Vertical Limit
7.1.1	A457	VJB to 25 DME VJB (Lower Sector)	11,000FT to FL260
		VJB to 25 DME VJB (Upper Sector)	FL300 to FL460
		25 DME VJB to Kuala Lumpur TMA boundary	FL140 to FL460
7.1.2	A464	SJ to 70 DME SJ	FL140 to FL260
		70 DME SJ to Kuala Lumpur TMA boundary	FL140 to FL460
7.1.3	G466	Kota Bahru TMA boundary to Kuala Lumpur TMA boundary	FL130 to FL460
7.1.4	G580	East of HOSBA within Area D	7,000FT to FL260
7.1.5	G582	Kuala Lumpur TMA boundary to VPK	FL130 to FL460
7.1.6	G584	Kuala Lumpur TMA boundary to western boundary WMR104	FL130 to FL460
		Western boundary WMR104 to VPK	FL180 to FL460
7.1.7	M751 / W540	VKB to a line joining 050300N 1023400E and 050830N 1025400E	7,000FT to FL460
		Between a line joining 050300N 1023400E and 050830N 1025400E, and a line joining 042000N 1025200E and 043000N 1031000E	FL130 to FL460
		From a line joining 043000N 1031000E and 042000N 1025200E to Kuantan CTR North	7,000FT to FL460
		Above Kuantan CTR	FL250 to FL460
7.1.8	M763	VPK to TAXUL	FL240 to FL460
		TAXUL to ENREP	FL260 to FL460
7.1.9	M765	Kota Bahru TMA boundary to 062324N 1024110E (Area A)	FL130 to FL460
		062324N 1024110E to 063000N 1025152E (Area B)	FL200 to FL460
7.1.10	R208	IGARI to VKR	FL260 to FL460
		VKR to Kuala Lumpur TMA boundary	FL130 to FL460
7.1.11	W533	Kuala Lumpur TMA boundary to Kuantan CTR boundary South West	FL130 to FL460
		Kuantan CTR boundary North East to VKP	5,000FT to 10,000FT
7.1.12	Y331	Kuala Lumpur TMA boundary to Kuantan CTR boundary West	FL150 to FL460
		Kuantan CTR boundary East to TAXUL	FL250 to FL460
7.1.13	Y336	Kuala Lumpur TMA boundary to western boundary of WMR104	FL130 to FL460
		Western boundary of WMR104 to PADLI	FL180 to FL460
		PADLI to KETOD	FL240 to FL460

	ATS Route	Segment	Vertical Limit
7.1.14	Y343	Kuala Lumpur TMA boundary to western boundary WMR104	FL130 to FL460
		Western boundary WMR104 to PADLI	FL180 to FL460
7.1.15	Y344	Kuala Lumpur TMA boundary to western boundary WMR104	FL130 to FL460
		Western boundary WMR104 to VPK	FL180 to FL460
7.1.16	Y345	Kuala Lumpur TMA boundary to GUGIT	FL130 to FL460
7.1.17	Y346	Kuala Lumpur TMA boundary to VKR	FL130 to FL460
7.1.18	Y349	Kuala Lumpur TMA boundary to Kuantan CTR boundary West	FL130 to FL460
		Kuantan CTR boundary East to TAXUL	FL250 to FL460

7.2 Unless otherwise specified, the following civil controlled airspace within the Exercise Areas is available as civil control airspace throughout the entire exercise period:

	Airspace	Vertical Limit
7.2.1	Kuala Lumpur TMA The area bounded by 013900N 1021000E, 020948N 1023830E (GUPTA), 022927N 1025643E, 024802N 1024019E (SAROX), 030055N 1022853E (ISTAN), 030944N 1022102E (KIMAT), 034024N 1015348E (PULIP), 035620N 1013940E, 034814N 1011903E (DAKUS), 032404N 1001743E thence FIR boundaries to 013900N 1021000E	SFC to FL245
7.2.2	Kuala Terengganu CTR	SFC to FL130
7.2.3	The airspace between the eastern boundary of M751 / W540 and R208 to the southern boundary of the Kuala Terengganu CTR	7,000FT to FL460
7.2.4	An area within 5NM of Pulau Redang (054555N 1030025E)	SFC to 5,000FT
7.2.5	Kerteh CTR	SFC to 9,000FT
7.2.6	A corridor on radial 239 degrees from Kerteh VOR / DME 8NM wide from the western boundary of M751 / W540 to Kerteh CTR West	4,000FT to 9,000FT
7.2.7	Kluang CTR	SFC to 3,000FT
7.2.8	Malacca CTR	SFC to 5,500FT
7.2.9	Above the lateral limits of Butterworth TMA	FL130 to FL460
7.2.10	Changi CTR and the area north of Changi CTR commencing at 013300N 1040154E to 013800N 1040154E, 013800N 1042000E, 013000N 1042000E, 012400N 1041500E, 012000N 1041224E, then along the Kuala Lumpur / Singapore FIR boundary to 012542N 1040454E, 013042N 1040700E and 013300N 1040154E Note: During the Special Activity period (270315UTC to 270345UTC April 2016), specified in paragraph 3.3, the vertical limit is FL140 to FL260.	SFC to FL260

	Airspace	Vertical Limit
7.2.11	The area bounded by 011310N 1040615E, 012000N 1041224E, 013000N 1042000E, 013000N 1042426E, 011530N 1042424E and 011310N 1040615E. Note: During the Special Activity period (270315UTC to 270345UTC April 2016), specified in paragraph 3.3, the vertical limit is FL140 to FL260.	2,000FT to FL260
7.2.12	Helicopter Transit Corridor east of Kota Bahru TMA bounded by 062424N 1022228E, 064500N 1024000E, 063900N 1030000E and 061054N 1023410E	2,000FT to 4,000FT
7.2.13	Helicopter Operating Area bounded by 044154N 1032500E, 060000N 1031500E, 063900N 1030000E, 064500N 1024000E, 070000N 1030000E, 070000N 1042848E, 054000N 1060000E, 050000N 1060000E, 042000N 1043000E, 042900N 1033500E, then along the eastern boundary of Kerteh CTR to 044154N 1032500E	SFC to 4,000FT
7.2.14	Singapore Light Aircraft Training Areas A, B and C together with Seletar CTR (Zone 'A' and Zone 'B'), Paya Lebar CTR and Sembawang ATZ	Refer to paragraph 3.3 for Special Activity period
7.2.15	An area of 13NM radius centred at 031048N 1030054E (Bukit Ibam)	SFC to 60,000FT
7.2.16	An area of 10NM radius centred at 054632N 1023016E (Bukit Petri)	SFC to 6,000FT
7.2.17	An area of 5NM radius centred at 015100N 1025600E (Batu Pahat)	SFC to 5,000FT
7.2.18	Johor Bahru Temporary CTR 012730N 1034400E, 013530N 1033600E, then clockwise around the arc of a circle radius 5.3NM centred on 013742N 1034100E to 014000N 1034555E, 012830N 1034800E, then along the national boundary to 012730N 1034400E (excluding WMP228)	SFC to 8,000FT
7.2.19	The area bounded by 013530N 1033600E, 014900N 1033130E, then clockwise around the arc of a circle radius 8NM centred on 014400N 1033730E to 015110N 1034100E, 014000N 1034555E, then anti-clockwise around the arc of a circle radius 5.3NM centred on 013742N 1034100E to 013530N 1033600E	SFC to 8,000FT
7.2.20	The area bounded by 014928N 1035014E, 015758N 1034921E thence clockwise along the 35 DME VTK arc to 015439N 1042000E, 013800N 1042000E, 013800N 1040154E, 013300N 1040154E, 012519N 1035813E and 014928N 1035014E (within Area D south of 35 DME VTK). Note: During the Special Activity period (270315UTC to 270345UTC April 2016), specified in paragraph 3.3, the vertical limit is FL140 to FL260.	3,000FT to FL260 <u>Special Activity Period</u> * FL140 to FL260

	Airspace	Vertical Limit
7.2.21	<p>The area bounded by 015758N 1034921E, 022221N 1034642E thence clockwise along the 59 DME VTK arc to 022203N 1041700E, 020000N 1041700E, 020000N 1042000E, 015439N 1042000E thence along the 35 DME VTK arc to 015758N 1034921E (within Area D, from 35 DME VTK to 59 DME VTK)</p> <p>Note: During the Special Activity period (270315UTC to 270345UTC April 2016), specified in paragraph 3.3, the vertical limit is FL140 to FL260.</p>	<p>6,000FT to FL260</p> <p><u>Special Activity</u> <u>Period</u></p> <p>* FL140 to FL260</p>

8 RESTRICTIONS AND PROCEDURES

8.1 SINGAPORE CHANGI AIRPORT

8.1.1 During the intense aerial activity, ADEX Windows as described in paragraphs 3.1 and 3.2, ATS route Y339 is not available for flight planning. Aircraft departing from Singapore Changi Airport, routing via Peninsular Malaysia, to file MASBO SID for ATS route A457 to VKL. Overflights are to flight plan via A457.

8.1.2 Aircraft arriving via ATS route A464, to file ARAMA STAR, can expect to maintain FL140 until BOBAG. (En-route descent may be available, but it should not be anticipated.)

8.1.3 Singapore Changi Airport will be closed during the Special Activity period from **270315UTC to 270345UTC April 2016**.

8.1.4 To ensure that departures from Singapore Changi Airport are able to pass through FL140 prior to the commencement of the Special Activity, ATC will only allow departures up to 10 minutes before airport closure time.

8.1.5 For the first 15 minutes following Singapore Changi Airport's re-opening at 0345UTC, Changi arrivals will be allowed to land on both runways while departures will depart on Runway 02C/20C only. Segregated mode of operations will resume after 0400UTC.

8.2 BUTTERWORTH CTR AND KUANTAN CTR

8.2.1 Butterworth CTR: SFC to 12,000FT
Kuantan CTR : SFC to FL240
(Note: During the exercise period, Kuantan TMA is inoperative.)

8.2.2 Butterworth and Kuantan ATC will provide separation and co-ordination between exercise traffic and prior notified non-exercise traffic throughout the period of activation.

- 8.2.3 Regular scheduled civil traffic will be coordinated with exercise traffic to permit normal operation where possible within both the Butterworth and Kuantan CTRs. However, some routing restrictions can be expected during the period of the exercise.
- 8.2.4 Non-scheduled civil and non-exercise military traffic will be able to operate within Butterworth and Kuantan CTRs provided that prior permission is obtained in accordance with paragraph 5. Continuation and / or circuit training flights will not be permitted within the CTR.
- 8.2.5 Scheduled civil flights that are unable to adhere to their published timings are to notify the BS 16 Airspace Cell at HQIADS through the appropriate ATC Supervisor as soon as delays are identified prior to departure. During periods of intense aerial activity, some delays may be expected.
- 8.2.6 Butterworth TACAN VBT CH80X / 133.3MHZ may be turned off for unspecified periods during the exercise.

8.3 JOHOR BAHRU / SENAI INTERNATIONAL AIRPORT

- 8.3.1 The Johor Bahru CTR will be deactivated for the period of the exercise. However, to allow for scheduled civil aircraft operations in and out of Johor Bahru / Senai International Airport, including the completion of standard instrument approaches and departures, a temporary CTR as described at paragraphs 7.2.18 and 7.2.19 will be released to civil ATC. Aircraft arriving via ATS route A464 can expect to maintain FL140 and descend overhead VJB. In case of aircraft operational requirement / limitation where entering an active exercise area is necessary, separation will be provided real time by ATC.
- 8.3.2 Non-scheduled civil and non-exercise military traffic will be able to operate in and out of Johor Bahru / Senai International Airport provided that prior permission is obtained in accordance with paragraph 5. In such circumstances, some delays may be expected.

8.4 PULAU TIOMAN AIRPORT

- 8.4.1 An area within Pulau Tioman and adjoining corridors to VPK DVOR and VMR DVOR as described below is released to civil control according to the timings prescribed below throughout the duration of the exercise. Regular scheduled traffic will be able to operate within the area and adjoining corridors with prior coordination made through the appropriate ATC Supervisor to the BS 16 Airspace Cell at HQIADS. The corridor coordinates are as follows:

Lateral Limit	Vertical Limit	Available Timing
Pekan (VPK) to Tioman Island (Tioman Corridor North)		
An area within 5NM radius of Pulau Tioman (024906N 1040950E)	SFC – 9,000FT	Will be coordinated by BS 16 Airspace Cell.
A corridor 5NM wide from VPK VOR direct to Pulau Tioman with the following heights:		
VPK to 15NM Tioman	7,000FT – FL130	
15NM Tioman to Tioman	3,000FT – 9,000FT	
Mersing (VMR) to Tioman Island (Tioman Corridor South)		
An area within 5NM radius of Pulau Tioman (024906N 1040950E)	SFC – 9,000FT	Will be coordinated by BS 16 Airspace Cell.
A corridor 5NM wide from VMR VOR direct to Pulau Tioman with the following heights:		
VMR to 10NM Tioman	7,000FT – 9,000FT	
10NM Tioman to Tioman	3,000FT – 9,000FT	

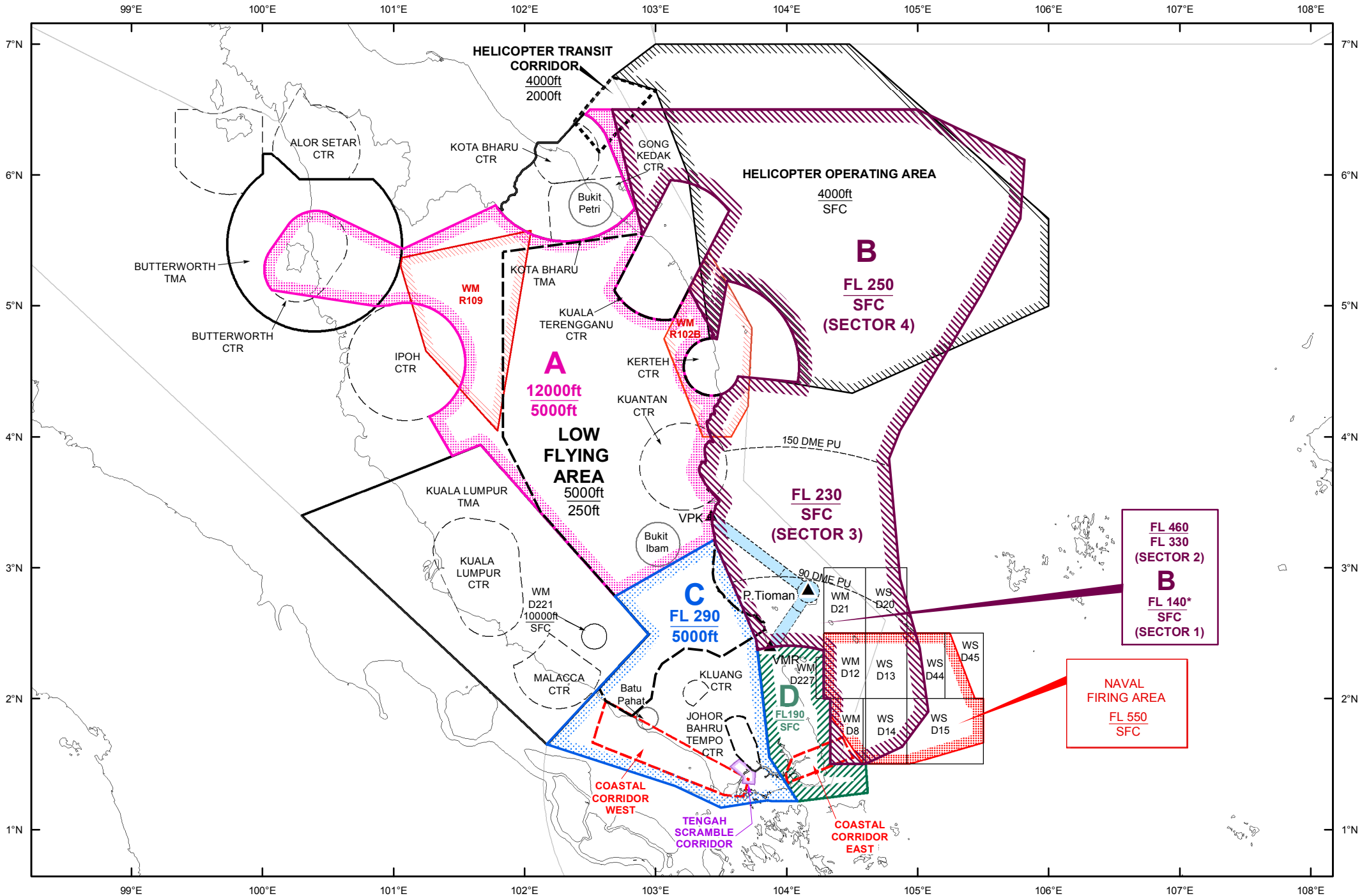
- 8.4.2 Non-scheduled civil aircraft and non-exercise military traffic will be able to operate into Pulau Tioman Airport provided that prior permission is obtained. Requests for clearance for non-scheduled civil movements and non-exercise military traffic are to be made in accordance with paragraph 5. During periods of intense aerial activity, some delays may be expected.

9 COORDINATION TELEPHONE / FACSIMILE NUMBERS AND EMAIL

Unit	Contact Details
BS 16 Airspace Cell at HQAIDS	Phone: +60 43143099 +60 43143399 +6016 4198391 Fax : +60 43239926 +60 43325159 e-mail : plansa1@hqiads.mil.my
Exercise Coordinator (JATCC Subang)	Phone: +60 3-78462123 Fax : +60 3-78465605
Singapore Area Coordinator (SATCC)	Phone: +65 65105333 Fax : +65 65105314
Kuantan Area Coordinator	Phone: +60 9-5385232
Butterworth Area Coordinator	Phone: +60 4-3319740
Kuala Lumpur ACC	Phone: +60 3-78465458 +60 3-78473573 Fax +60 3-78473572

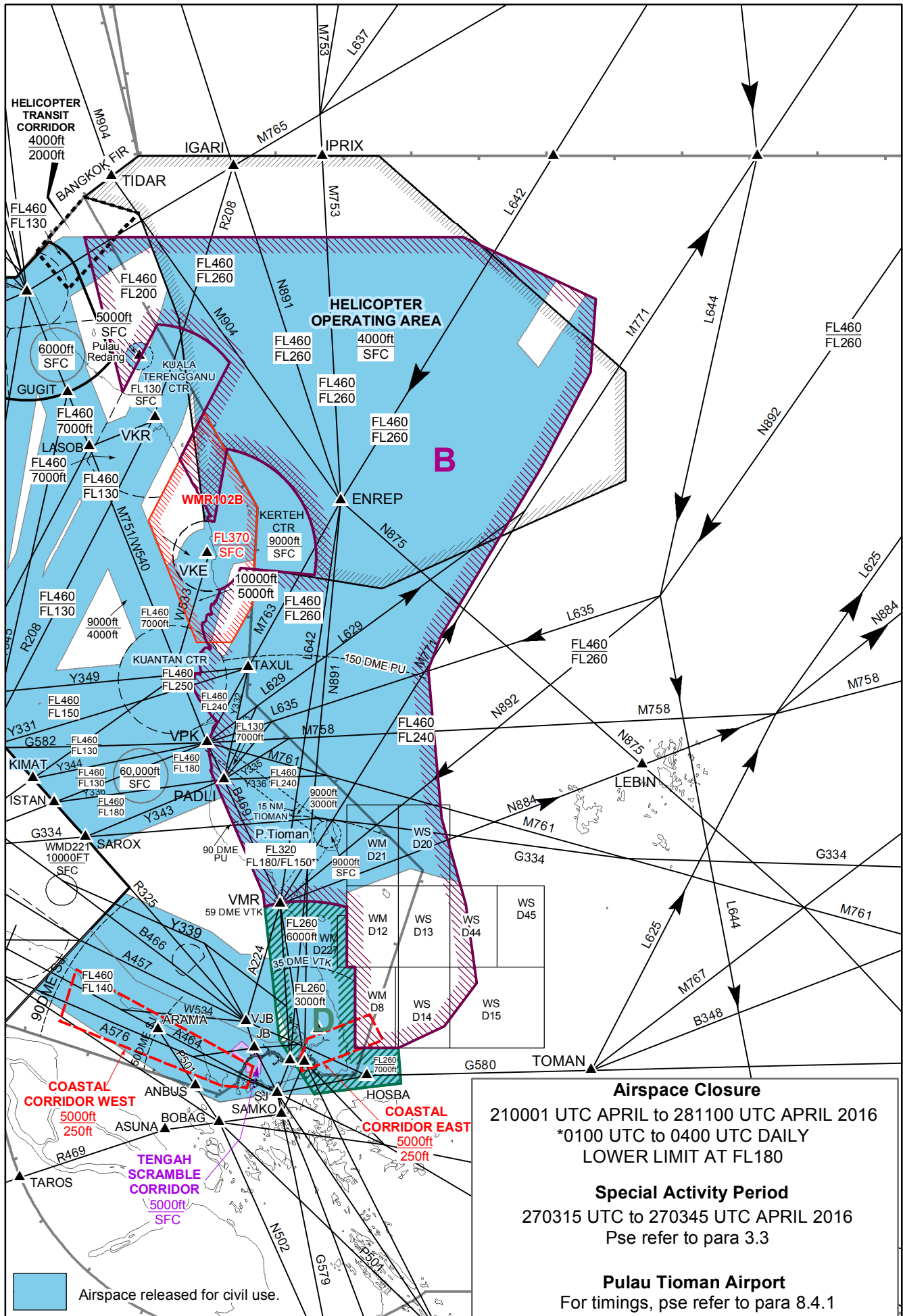
EXERCISE BERSAMA SHIELD 16 - EXERCISE AIRSPACE

CHART 1



**EXERCISE BERSAMA SHIELD 16
SINGAPORE & KUALA LUMPUR FIRs
210001 UTC APRIL TO 281100 UTC APRIL 2016**

CHART 3



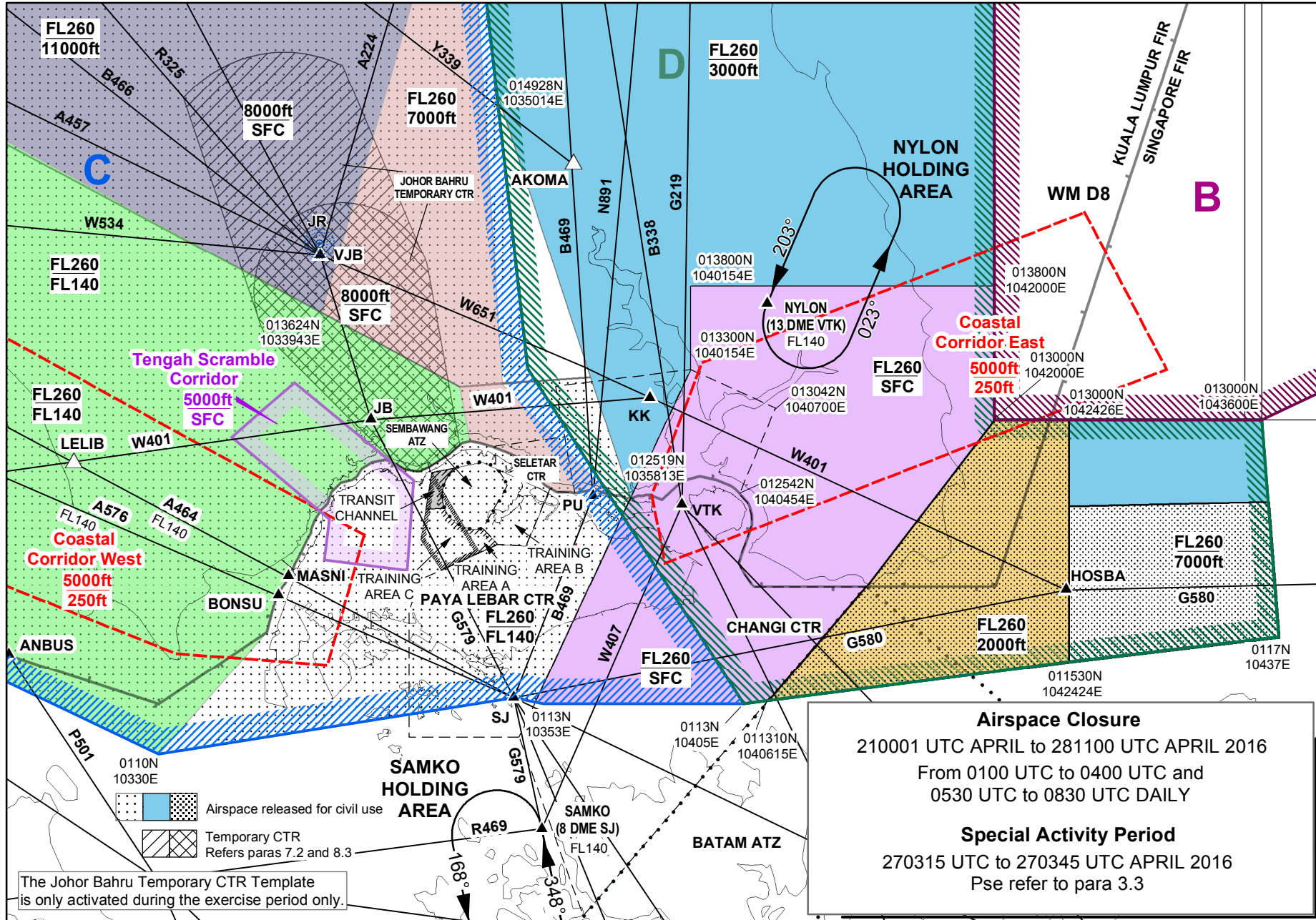
Airspace Closure
 210001 UTC APRIL to 281100 UTC APRIL 2016
 *0100 UTC to 0400 UTC DAILY
 LOWER LIMIT AT FL180

Special Activity Period
 270315 UTC to 270345 UTC APRIL 2016
 Pse refer to para 3.3

Pulau Tioman Airport
 For timings, pse refer to para 8.4.1

**EXERCISE BERSAMA SHIELD 16
SINGAPORE & KUALA LUMPUR FIRs
210001 UTC APRIL TO 281100 UTC APRIL 2016**

CHART 4

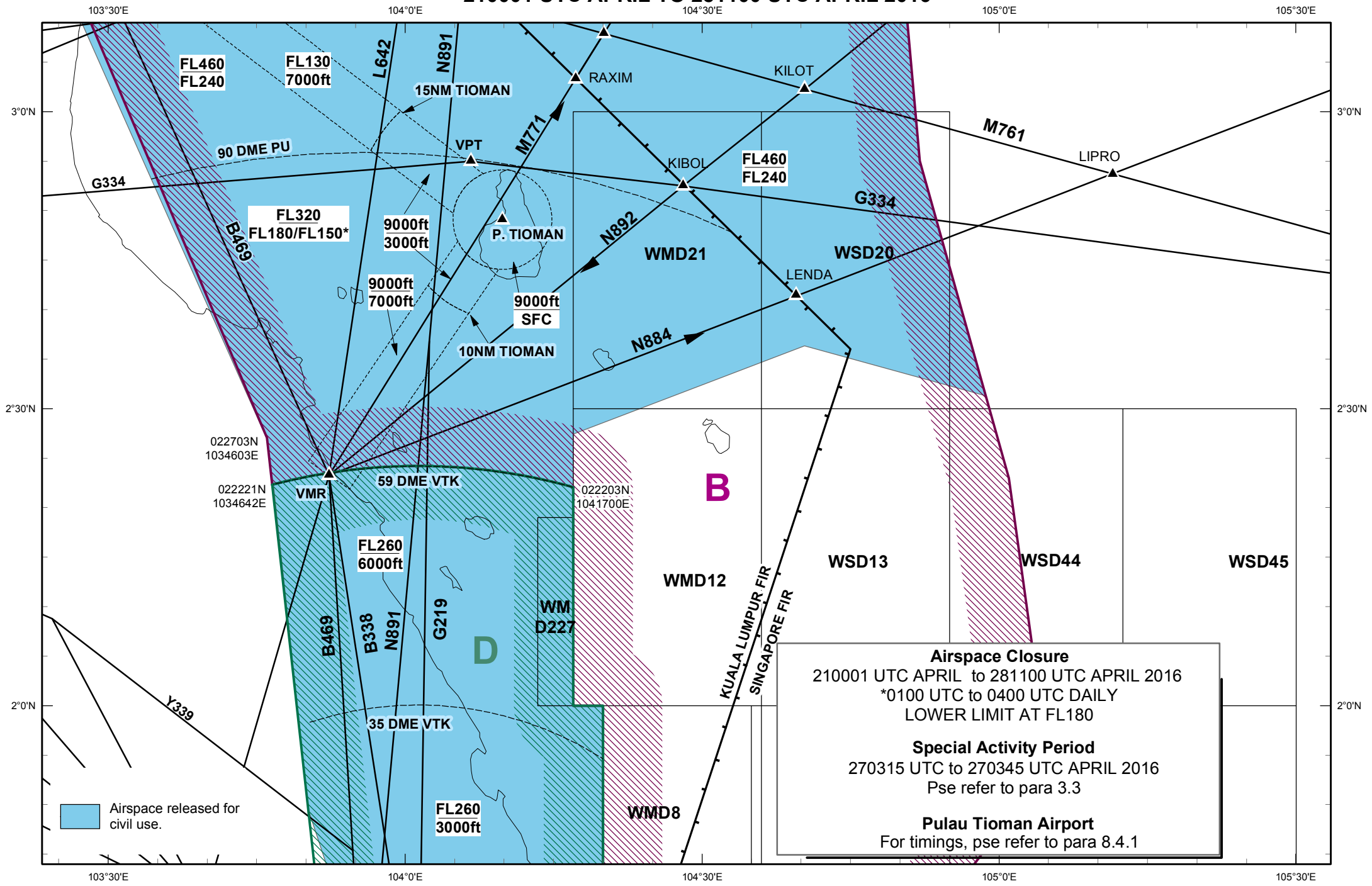


EXERCISE BERSAMA SHIELD 16

SINGAPORE & KUALA LUMPUR FIRs

210001 UTC APRIL TO 281100 UTC APRIL 2016

CHART 5



Airspace Closure
 210001 UTC APRIL to 281100 UTC APRIL 2016
 *0100 UTC to 0400 UTC DAILY
 LOWER LIMIT AT FL180

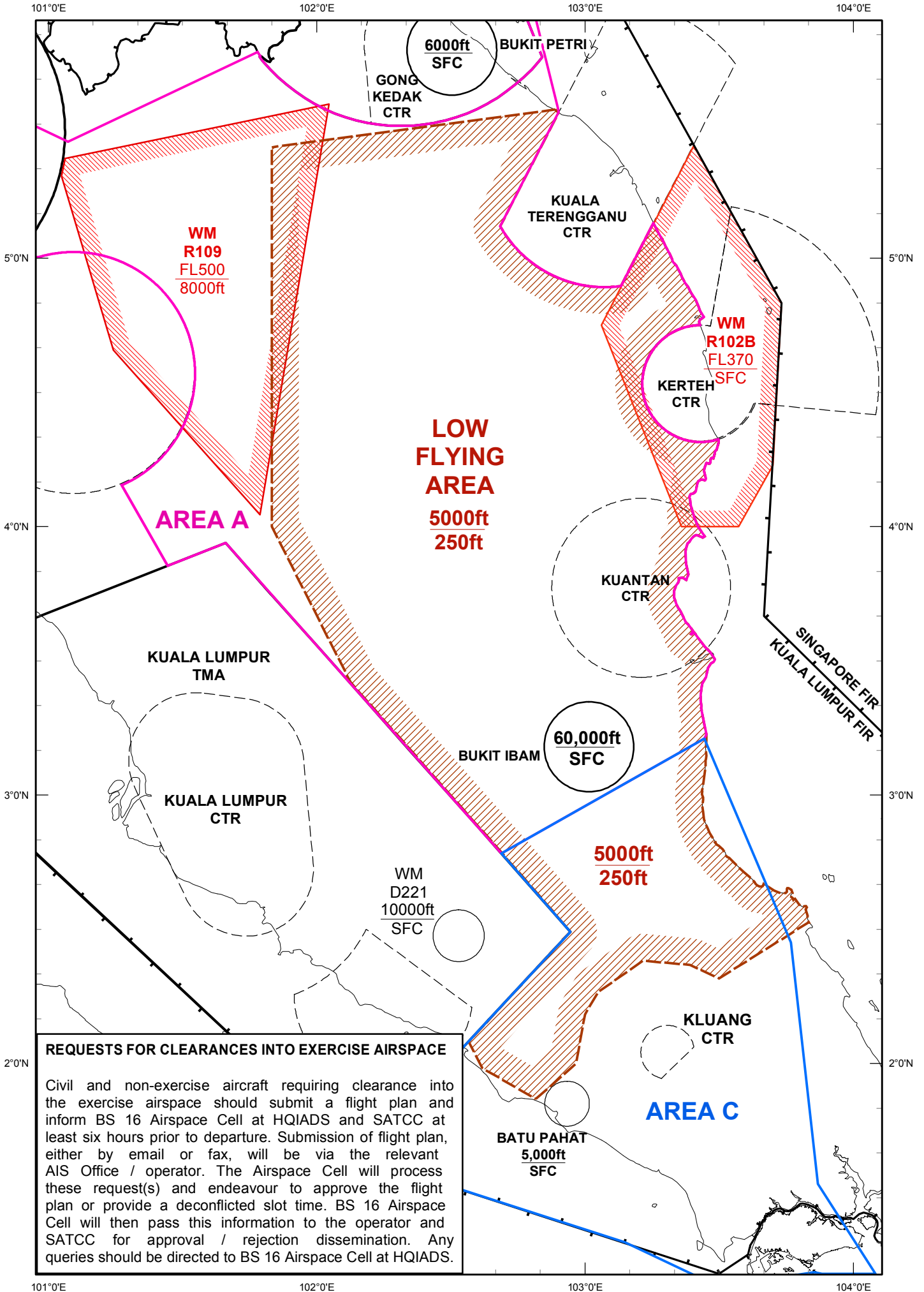
Special Activity Period
 270315 UTC to 270345 UTC APRIL 2016
 Pse refer to para 3.3

Pulau Tioman Airport
 For timings, pse refer to para 8.4.1

Airspace released for civil use.

EXERCISE BERSAMA SHIELD 16 - LOW FLYING AREA

CHART 6

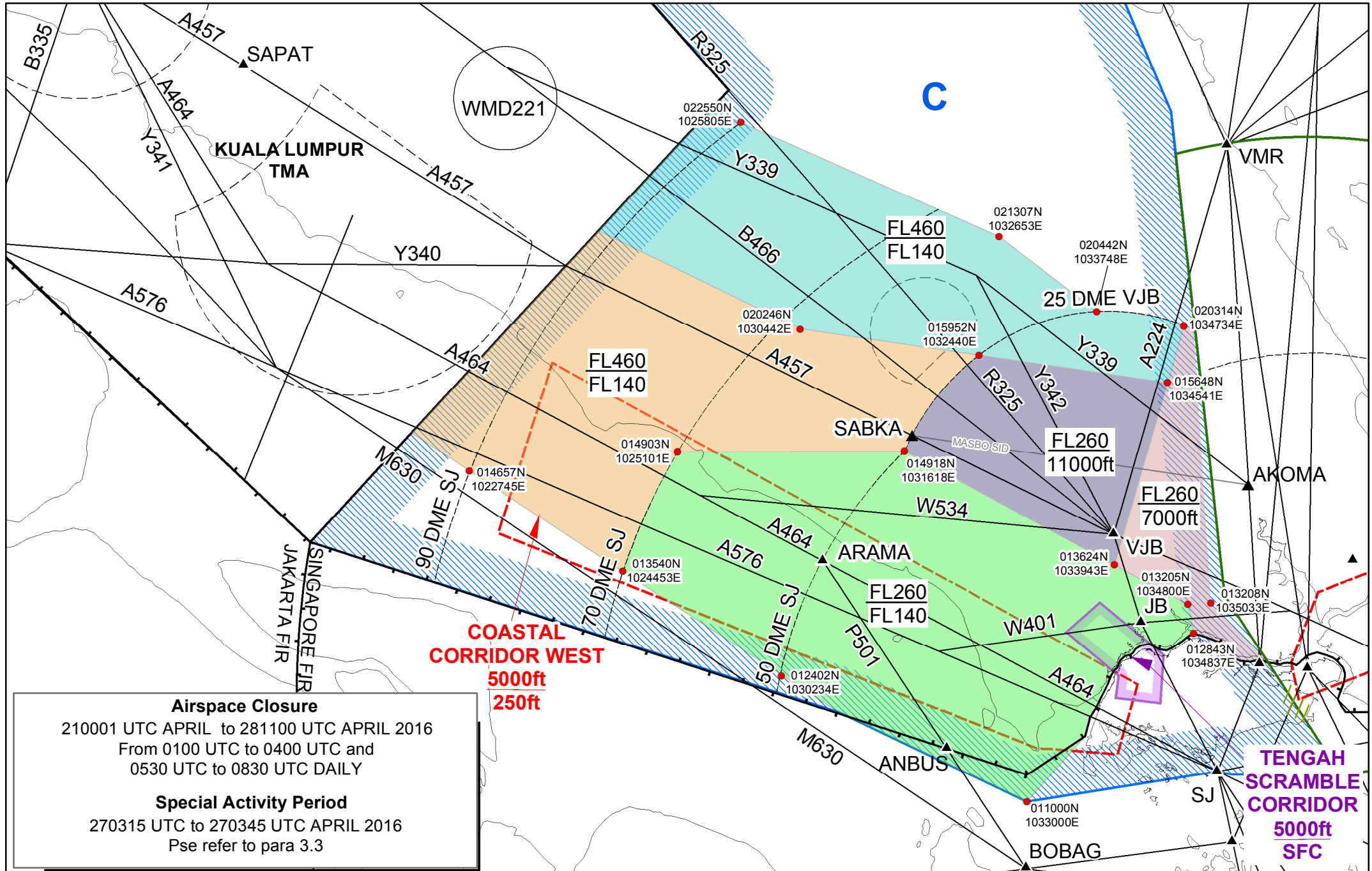


REQUESTS FOR CLEARANCES INTO EXERCISE AIRSPACE

Civil and non-exercise aircraft requiring clearance into the exercise airspace should submit a flight plan and inform BS 16 Airspace Cell at HQIADS and SATCC at least six hours prior to departure. Submission of flight plan, either by email or fax, will be via the relevant AIS Office / operator. The Airspace Cell will process these request(s) and endeavour to approve the flight plan or provide a deconflicted slot time. BS 16 Airspace Cell will then pass this information to the operator and SATCC for approval / rejection dissemination. Any queries should be directed to BS 16 Airspace Cell at HQIADS.

**EXERCISE BERSAMA SHIELD 16
SINGAPORE & KUALA LUMPUR FIRs
210001 UTC APRIL TO 281100 UTC APRIL 2016**

CHART 7



Airspace Closure
210001 UTC APRIL to 281100 UTC APRIL 2016
From 0100 UTC to 0400 UTC and
0530 UTC to 0830 UTC DAILY

Special Activity Period
270315 UTC to 270345 UTC APRIL 2016
Pse refer to para 3.3