

Contact

Post:

REPUBLIC OF SINGAPORE
AERONAUTICAL
INFORMATION SERVICES
CIVIL AVIATION AUTHORITY
OF SINGAPORE
SINGAPORE CHANGI
AIRPORT
P.O. BOX 1, SINGAPORE
918141

Tel: (65) 6595 6051

AFS: WSSSYNYX

Fax: (65) 64410221

Email: caas_singaporeais@caas.gov.sgURL: www.caas.gov.sgURL: <https://fpl-1.caasaim.gov.sg>

AIP Supplement for Singapore



**AIP SUP
040/2017**

Effective from 13 APR 2017

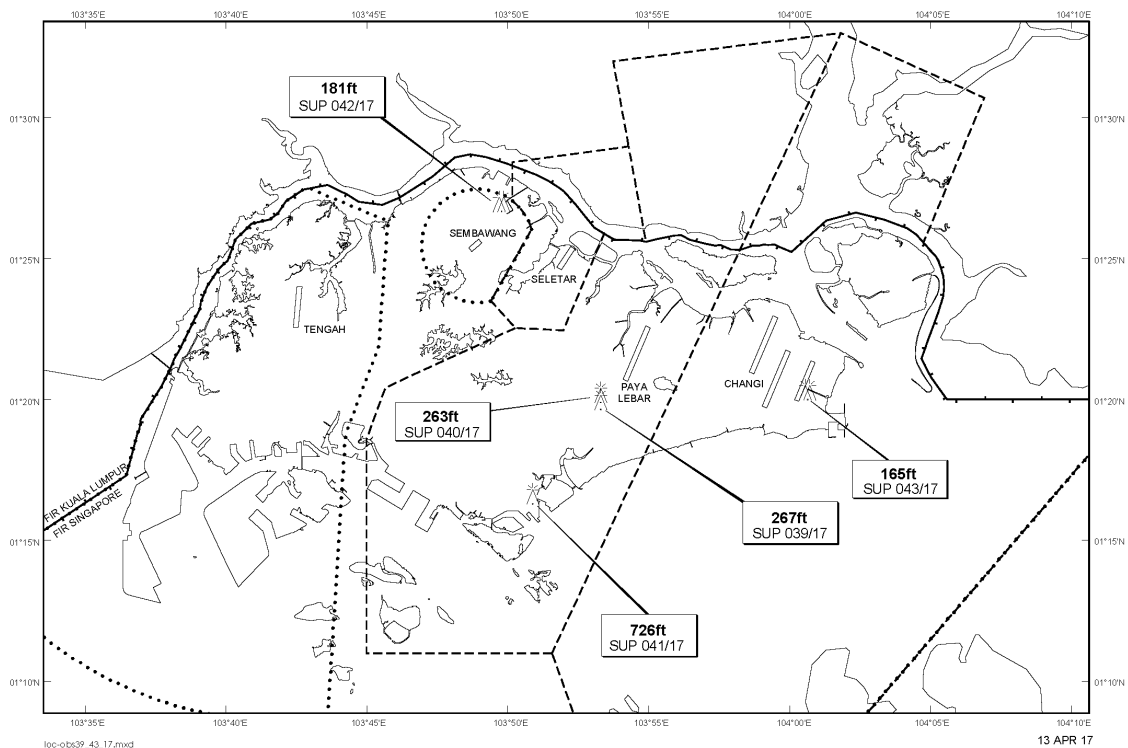
/ 31 MAY 2017

Published on 13 APR 2017

PAYA LEBAR AIRPORT – MOBILE CRANE

WIE/1705311559 one mobile crane, height 263ft AMSL, erected at 012015N 1035318E (bearing 218.1 degrees, distance 1.4nm from Paya Lebar ARP - within Paya Lebar CTR). Mobile crane marked and lighted at night. (NOTAM A0801/17 dated 24/03/17 is hereby superseded.)

LOCATION OF OBSTACLES



PAGE INTENTIONALLY LEFT BLANK