

**Contact**

Post:

REPUBLIC OF SINGAPORE  
AERONAUTICAL  
INFORMATION SERVICES  
CIVIL AVIATION AUTHORITY  
OF SINGAPORE  
SINGAPORE CHANGI  
AIRPORT  
P.O. BOX 1, SINGAPORE  
918141

Tel: (65) 6595 6051

AFS: WSSSYNYX

Fax: (65) 64410221

Email: [caas\\_singaporeais@caas.gov.sg](mailto:caas_singaporeais@caas.gov.sg)URL: [www.caas.gov.sg](http://www.caas.gov.sg)URL: <https://fpl-1.caasaim.gov.sg>

## AIP Supplement for Singapore



**AIP SUP**  
**041/2017**

Effective from 13 APR 2017

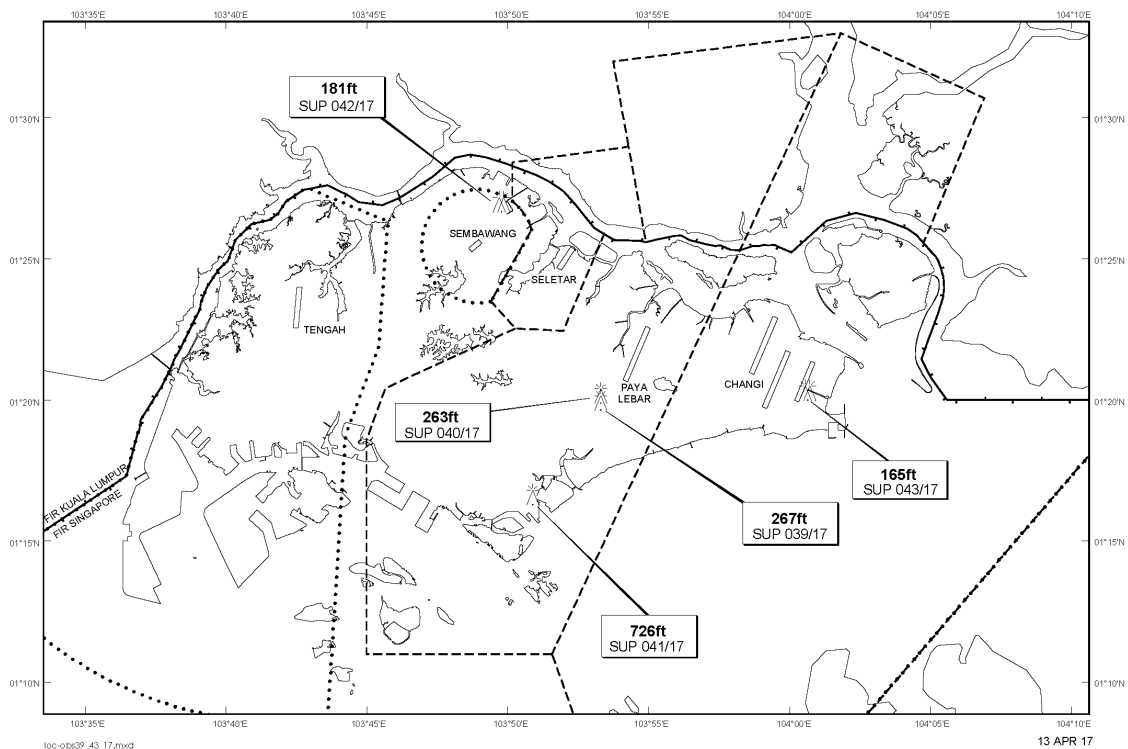
/ 31 DEC 2017

Published on 13 APR 2017

### PAYA LEBAR AIRPORT – LUFFER CRANE

WIE/1712311559 one luffer crane, height 726ft AMSL, erected at 011639N 1035053E (bearing 214.9 degrees, distance 5.7nm from Paya Lebar ARP - within Paya Lebar CTR). Luffer crane marked and lighted at night. (NOTAM A0464/17 dated 22/02/17 is hereby superseded.)

#### LOCATION OF OBSTACLES



*PAGE INTENTIONALLY LEFT BLANK*