

**Contact**

Post:

REPUBLIC OF SINGAPORE  
AERONAUTICAL  
INFORMATION SERVICES  
CIVIL AVIATION AUTHORITY  
OF SINGAPORE  
SINGAPORE CHANGI  
AIRPORT  
P.O. BOX 1, SINGAPORE  
918141

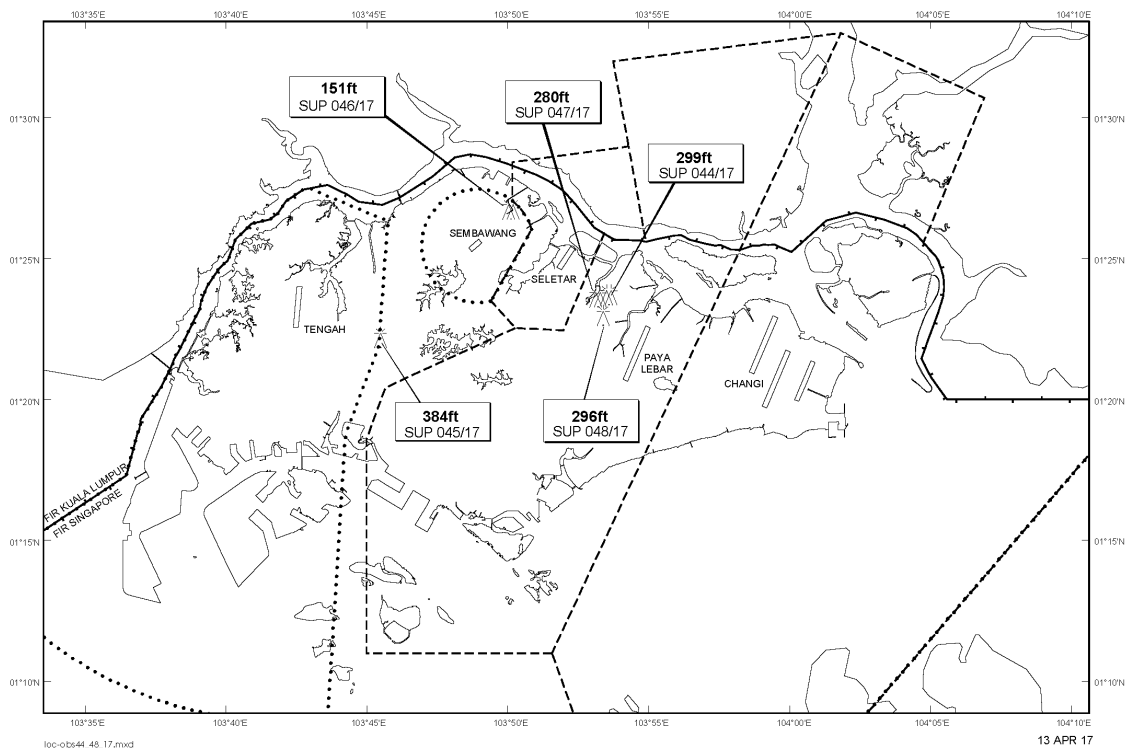
Tel: (65) 6595 6051

AFS: WSSSYNYX

Fax: (65) 64410221

Email: [caas\\_singaporeais@caas.gov.sg](mailto:caas_singaporeais@caas.gov.sg)URL: [www.caas.gov.sg](http://www.caas.gov.sg)URL: <https://fpl-1.caasaim.gov.sg>**AIP Supplement for  
Singapore****AIP SUP  
044/2017****Effective from 13 APR 2017****/ 07 JAN 2018****Published on 13 APR 2017****PAYA LEBAR AIRPORT – MOBILE CRANES AND CRAWLER CRANES**

WIE/1801071559 eight mobile cranes and four crawler cranes, height 299ft AMSL, erected at 012343N 1035335E (bearing 346.2 degrees, distance 2.5nm from Paya Lebar ARP - within Paya Lebar CTR). Mobile cranes and crawler cranes marked and lighted at night. (NOTAM A0423/17 dated 15/02/17 is hereby superseded.)

**LOCATION OF OBSTACLES**

*PAGE INTENTIONALLY LEFT BLANK*