

**Contact**

Post:

REPUBLIC OF SINGAPORE  
AERONAUTICAL  
INFORMATION SERVICES  
CIVIL AVIATION AUTHORITY  
OF SINGAPORE  
SINGAPORE CHANGI  
AIRPORT  
P.O. BOX 1, SINGAPORE  
918141

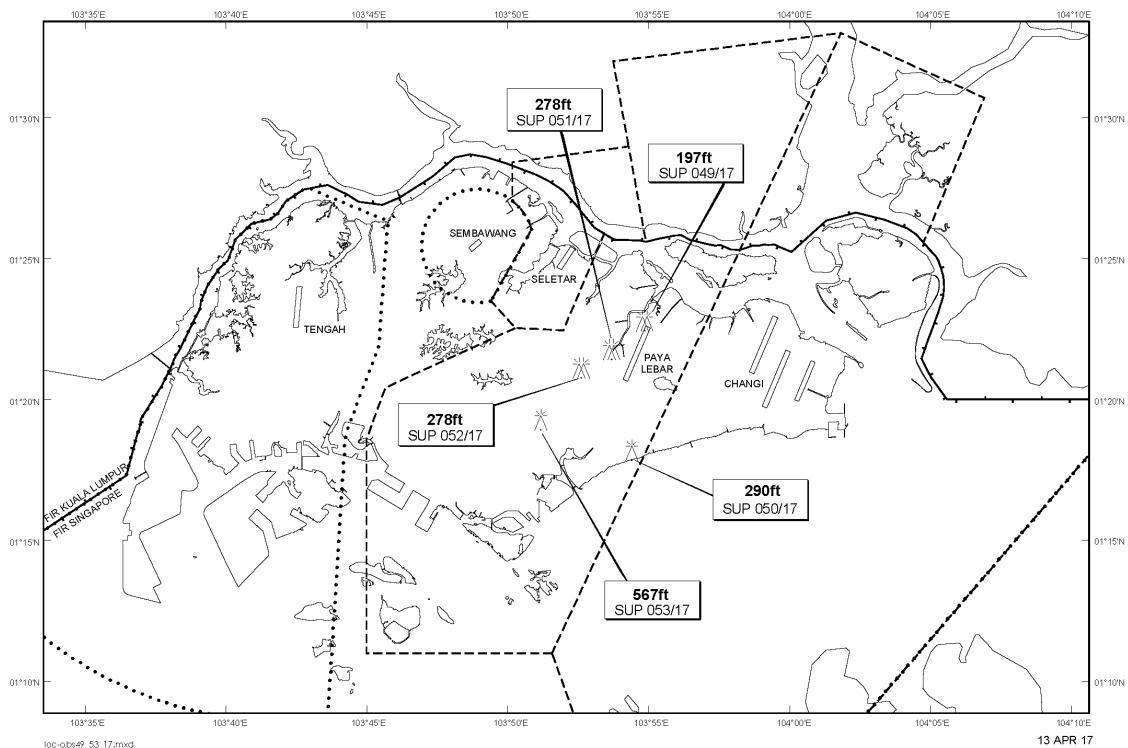
Tel: (65) 6595 6051

AFS: WSSSYNYX

Fax: (65) 64410221

Email: [caas\\_singaporeais@caas.gov.sg](mailto:caas_singaporeais@caas.gov.sg)URL: [www.caas.gov.sg](http://www.caas.gov.sg)URL: <https://fpl-1.caasaim.gov.sg>**AIP Supplement for  
Singapore****AIP SUP  
051/2017****Effective from 13 APR 2017****/ 05 MAR 2019****Published on 13 APR 2017****PAYA LEBAR AIRPORT – MOBILE CRANES**

WIE/1903051559 two mobile cranes, height 278ft AMSL, erected at 012146N 1035341E (bearing 311.3 degrees, distance 0.6nm from Paya Lebar ARP - within Paya Lebar CTR). Mobile cranes marked and lighted at night. (NOTAM A0279/17 dated 26/01/17 is hereby superseded.)

**LOCATION OF OBSTACLES**

*PAGE INTENTIONALLY LEFT BLANK*