

**Contact**

Post:

REPUBLIC OF SINGAPORE  
AERONAUTICAL  
INFORMATION SERVICES  
CIVIL AVIATION AUTHORITY  
OF SINGAPORE  
SINGAPORE CHANGI  
AIRPORT  
P.O. BOX 1, SINGAPORE  
918141

Tel: (65) 6595 6051

AFS: WSSSYNYX

Fax: (65) 64410221

Email: [caas\\_singaporeais@caas.gov.sg](mailto:caas_singaporeais@caas.gov.sg)URL: [www.caas.gov.sg](http://www.caas.gov.sg)URL: <https://fpl-1.caasaim.gov.sg>

## AIP Supplement for Singapore



**AIP SUP**  
**052/2016**

Effective from 04 AUG 2016

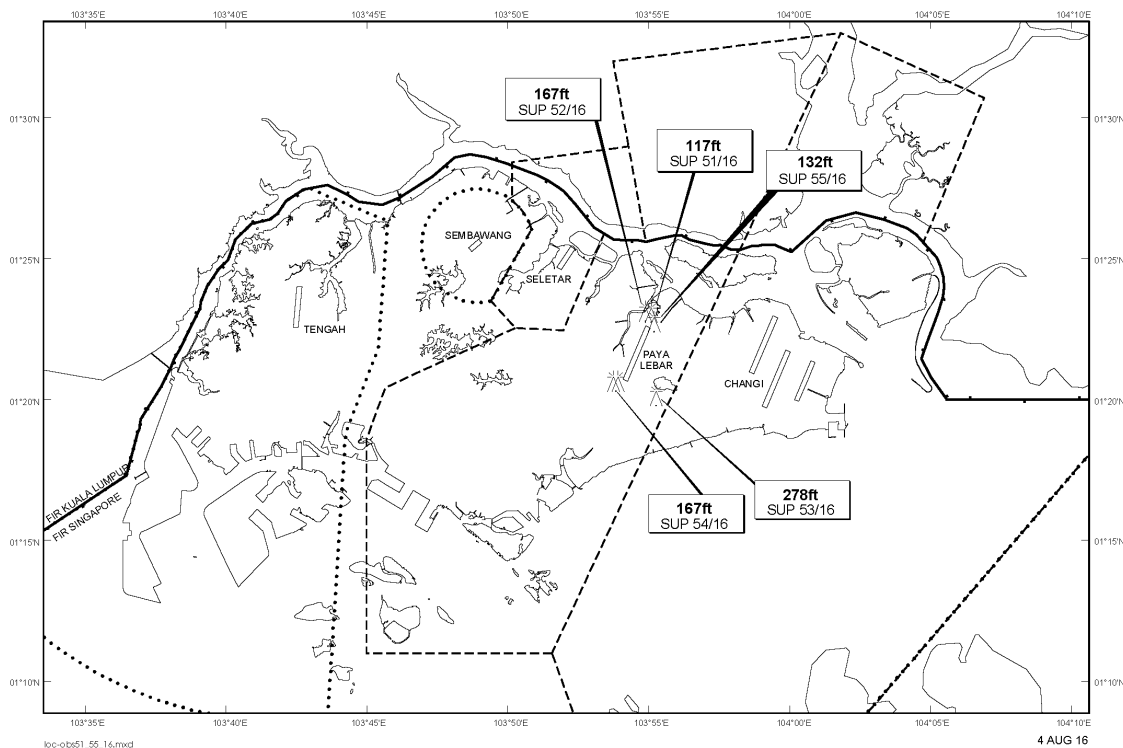
/ 31 DEC 2016

Published on 04 AUG 2016

## PAYA LEBAR AIRPORT – OBSTACLES

WIE/1612311559 one crawler crane, one piling rig and one piling machine, height 167ft AMSL, erected at 012308N 1035453E (bearing 21.8 degrees, distance 1.9nm from Paya Lebar ARP - within Paya Lebar CTR). Obstacles marked and lighted at night. (NOTAM A1134/16 dated 15/5/16 is hereby superseded.)

### LOCATION OF OBSTACLES



*PAGE INTENTIONALLY LEFT BLANK*