

**Contact**

Post:

REPUBLIC OF SINGAPORE  
AERONAUTICAL  
INFORMATION SERVICES  
CIVIL AVIATION AUTHORITY  
OF SINGAPORE  
SINGAPORE CHANGI  
AIRPORT  
P.O. BOX 1, SINGAPORE  
918141

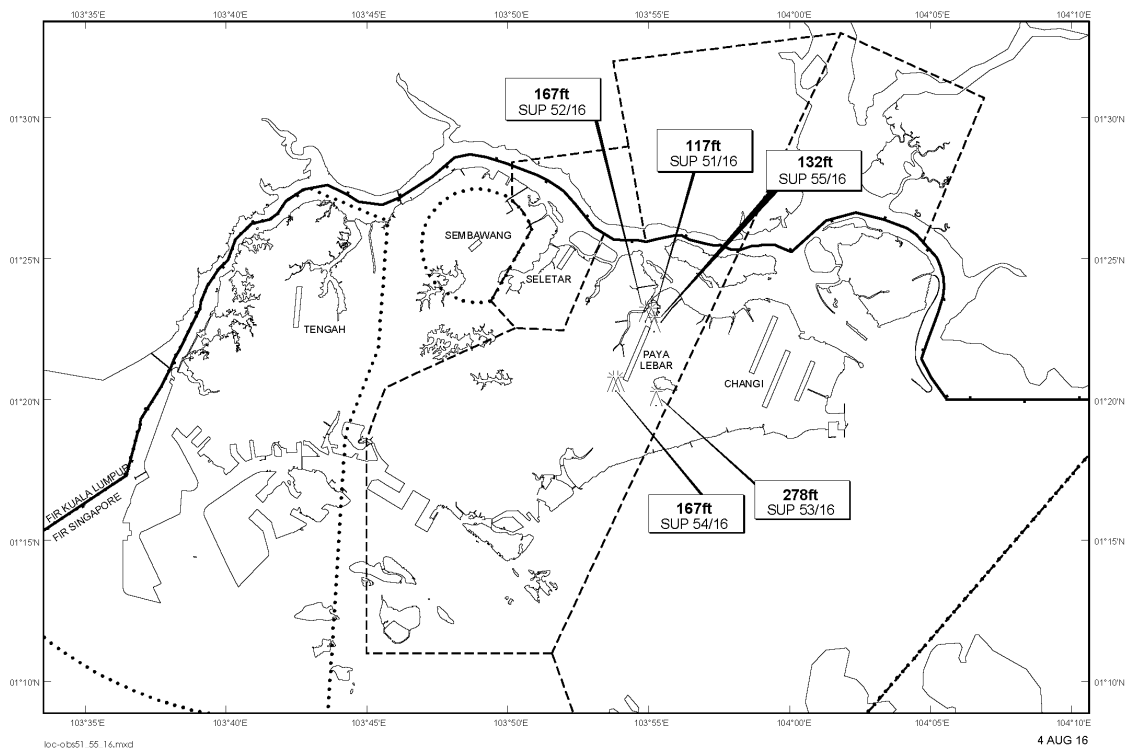
Tel: (65) 6595 6051

AFS: WSSSYNYX

Fax: (65) 64410221

Email: [caas\\_singaporeais@caas.gov.sg](mailto:caas_singaporeais@caas.gov.sg)URL: [www.caas.gov.sg](http://www.caas.gov.sg)URL: <https://fpl-1.caasaim.gov.sg>**AIP Supplement for  
Singapore****AIP SUP  
055/2016****Effective from 04 AUG 2016****/ 30 JUN 2017****Published on 04 AUG 2016****PAYA LEBAR AIRPORT – MOBILE CRANE AND CRAWLER CRANE**

WIE/1706301559 one mobile crane and one crawler crane, height 132ft AMSL, erected at 012246N 1035511E (bearing 35.9 degrees, distance 1.8nm from Paya Lebar ARP - within Paya Lebar CTR). Mobile crane and crawler crane marked and lighted at night. (NOTAM A1693/16 dated 18/7/16 is hereby superseded.)

**LOCATION OF OBSTACLES**

*PAGE INTENTIONALLY LEFT BLANK*