

Contact

Post:

REPUBLIC OF SINGAPORE
AERONAUTICAL
INFORMATION SERVICES
CIVIL AVIATION AUTHORITY
OF SINGAPORE
SINGAPORE CHANGI
AIRPORT
P.O. BOX 1, SINGAPORE
918141

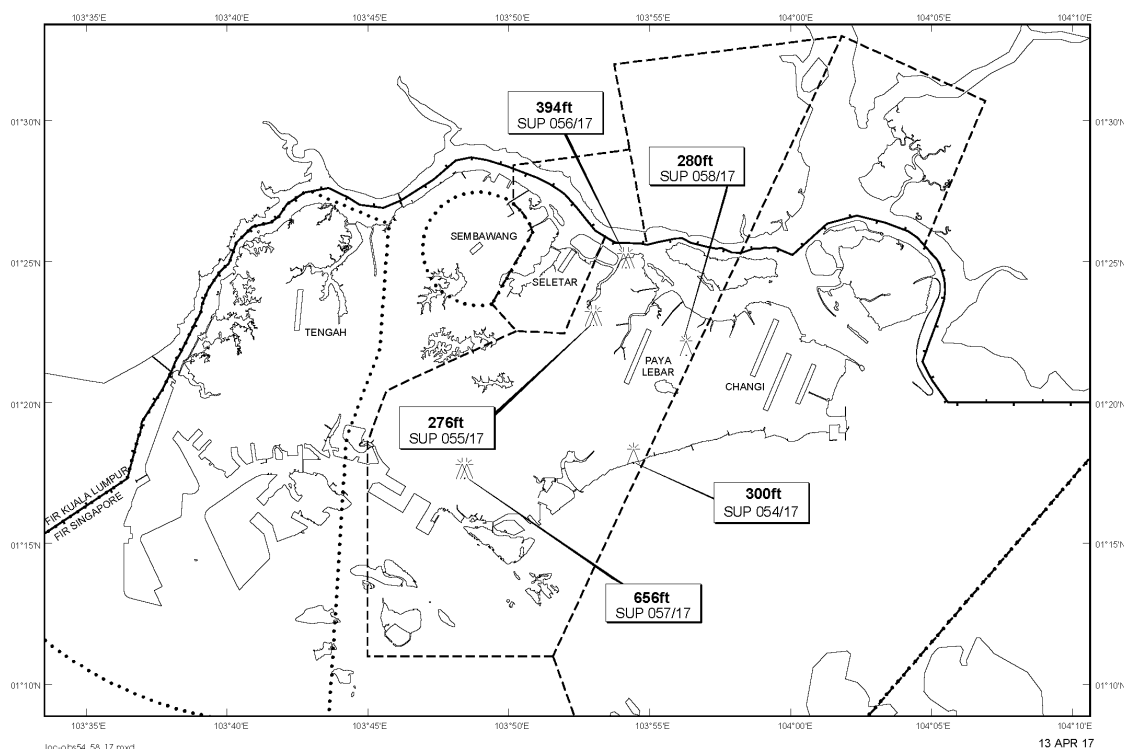
Tel: (65) 6595 6051

AFS: WSSSYNYX

Fax: (65) 64410221

Email: caas_singaporeais@caas.gov.sgURL: www.caas.gov.sgURL: <https://fpl-1.caasaim.gov.sg>**AIP Supplement for
Singapore****AIP SUP
055/2017****Effective from 13 APR 2017****/ 31 MAR 2019****Published on 13 APR 2017****PAYA LEBAR AIRPORT – TOPLESS CRANES AND LUFFER CRANE**

WIE/1903311559 five topless cranes and one luffer crane, height 276ft AMSL, erected at 012305N 1035300E (bearing 326.3 degrees, distance 2.1nm from Paya Lebar ARP - within Paya Lebar CTR). Topless cranes and luffer crane marked and lighted at night. (NOTAM A0806/17 dated 24/03/17 is hereby superseded.)

LOCATION OF OBSTACLES

PAGE INTENTIONALLY LEFT BLANK