

Contact

Post:

REPUBLIC OF SINGAPORE
AERONAUTICAL
INFORMATION SERVICES
CIVIL AVIATION AUTHORITY
OF SINGAPORE
SINGAPORE CHANGI
AIRPORT
P.O. BOX 1, SINGAPORE
918141

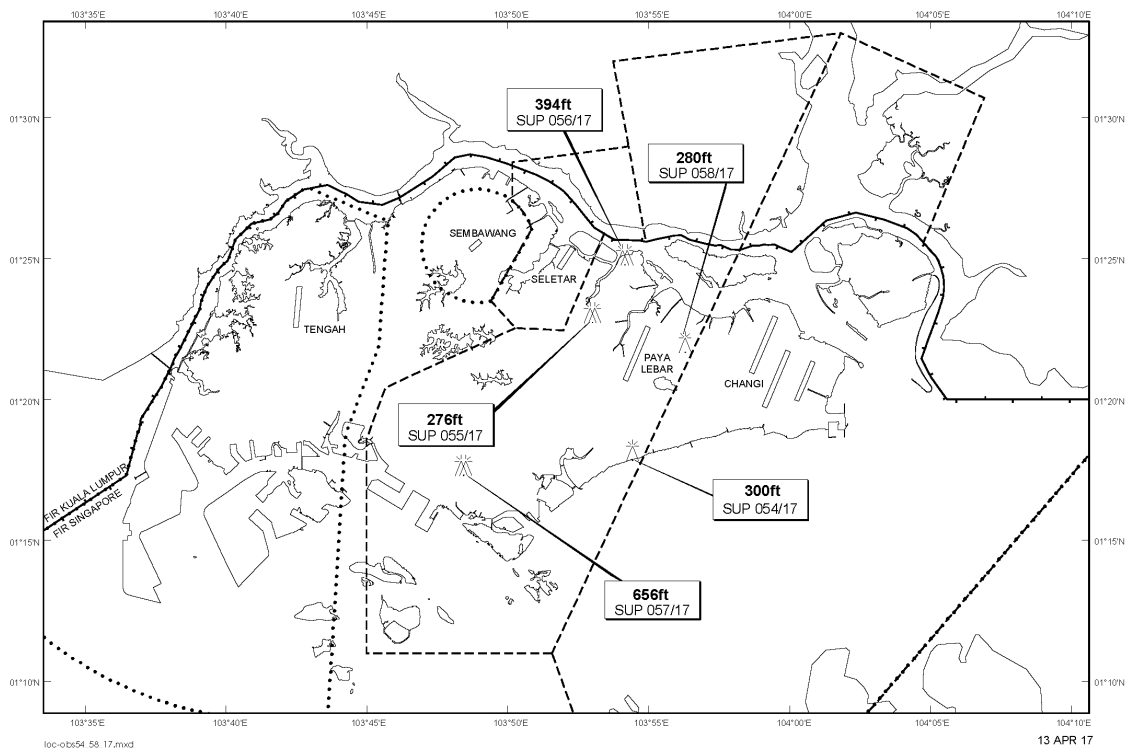
Tel: (65) 6595 6051

AFS: WSSSYNYX

Fax: (65) 64410221

Email: caas_singaporeais@caas.gov.sgURL: www.caas.gov.sgURL: <https://fpl-1.caasaim.gov.sg>**AIP Supplement for
Singapore****AIP SUP
057/2017****Effective from 13 APR 2017****/ 14 JAN 2020****Published on 13 APR 2017****PAYA LEBAR AIRPORT – LUFFER CRANES**

WIE/2001141559 four luffer cranes, height 656ft AMSL, erected at 011740N 1034825E (bearing 237.4 degrees, distance 6.8nm from Paya Lebar ARP - within Paya Lebar CTR). Luffer cranes marked and lighted at night. (NOTAM A0083/17 dated 09/01/17 is hereby superseded.)

LOCATION OF OBSTACLES

PAGE INTENTIONALLY LEFT BLANK