

Contact

Post:

REPUBLIC OF SINGAPORE
AERONAUTICAL
INFORMATION SERVICES
CIVIL AVIATION AUTHORITY
OF SINGAPORE
SINGAPORE CHANGI
AIRPORT
P.O. BOX 1, SINGAPORE
918141

Tel: (65) 6595 6051

AFS: WSSSYNYX

Fax: (65) 64410221

Email: caas_singaporeais@caas.gov.sgURL: www.caas.gov.sgURL: <https://fpl-1.caasaim.gov.sg>

AIP Supplement for Singapore



**AIP SUP
059/2017**

Effective from 13 APR 2017

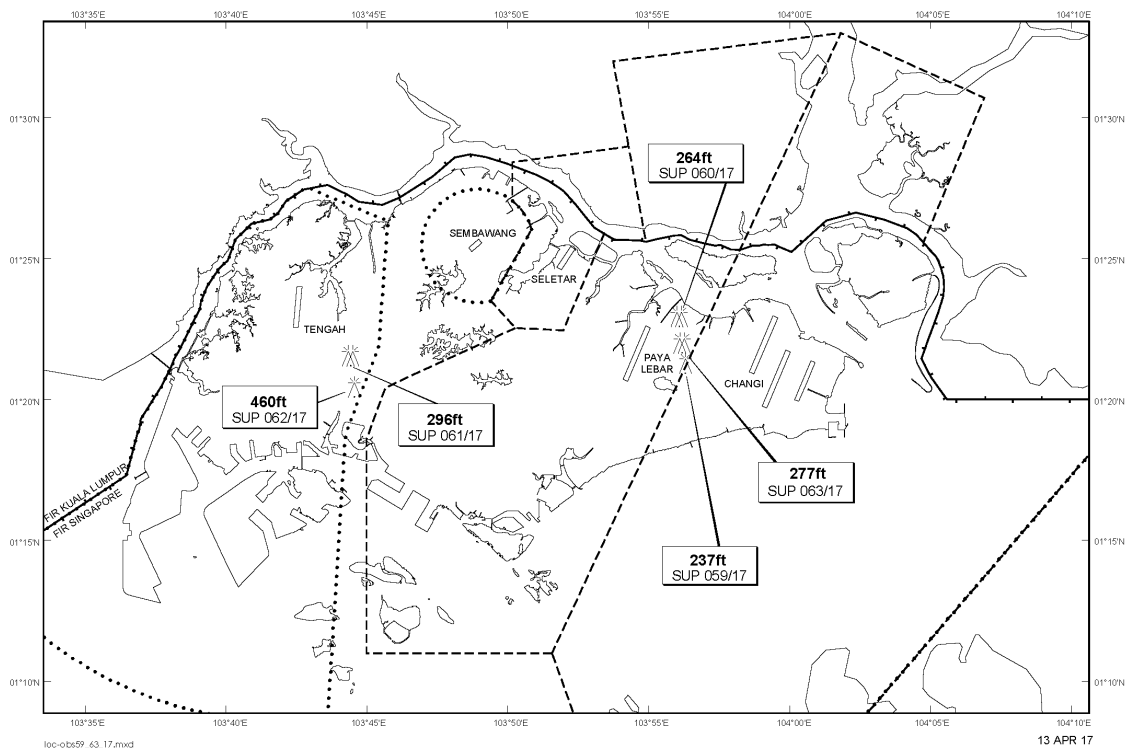
/ 30 JUN 2017

Published on 13 APR 2017

PAYA LEBAR AIRPORT – MOBILE CRANE

WIE/1706301559 one mobile crane, height 237ft AMSL, erected at 012117N 1035618E (bearing 109 degrees, distance 2.6nm from Paya Lebar ARP - within Paya Lebar CTR). Mobile crane marked and lighted at night. (NOTAM A0897/17 dated 30/03/17 is hereby superseded.)

LOCATION OF OBSTACLES



PAGE INTENTIONALLY LEFT BLANK