

Contact

Post:

REPUBLIC OF SINGAPORE
AERONAUTICAL
INFORMATION SERVICES
CIVIL AVIATION AUTHORITY
OF SINGAPORE
SINGAPORE CHANGI
AIRPORT
P.O. BOX 1, SINGAPORE
918141

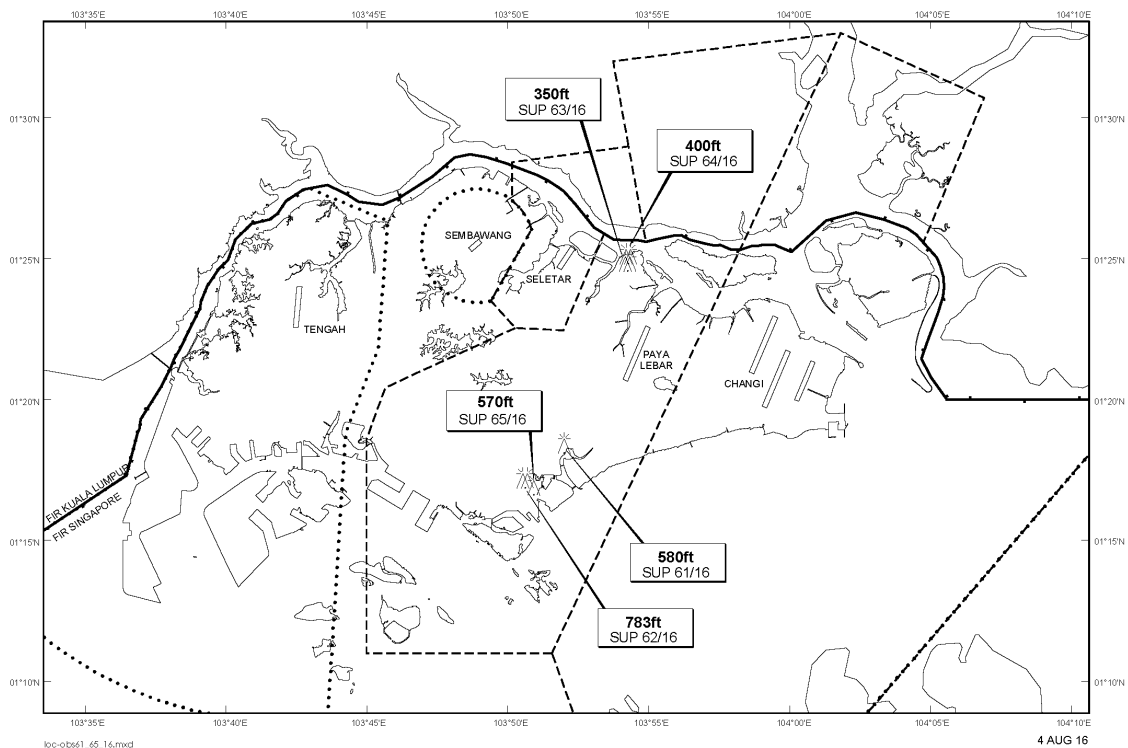
Tel: (65) 6595 6051

AFS: WSSSYNYX

Fax: (65) 64410221

Email: caas_singaporeais@caas.gov.sgURL: www.caas.gov.sgURL: <https://fpl-1.caasaim.gov.sg>**AIP Supplement for
Singapore****AIP SUP
061/2016****Effective from 04 AUG 2016****/ 29 JUN 2018****Published on 04 AUG 2016****PAYA LEBAR AIRPORT – LUFFER CRANE AND TOPLESS CRANE**

WIE/1806292200 one luffer crane and one topless crane, height 580ft AMSL, erected at 011827N 1035200E (bearing 216.8 degrees, distance 3.6nm from Paya Lebar ARP - within Paya Lebar CTR). Luffer crane and topless crane marked and lighted at night. (NOTAM A1269/16 dated 30/5/16 is hereby superseded.)

LOCATION OF OBSTACLES

PAGE INTENTIONALLY LEFT BLANK