

Contact

Post:

REPUBLIC OF SINGAPORE
AERONAUTICAL
INFORMATION SERVICES
CIVIL AVIATION AUTHORITY
OF SINGAPORE
SINGAPORE CHANGI
AIRPORT
P.O. BOX 1, SINGAPORE
918141

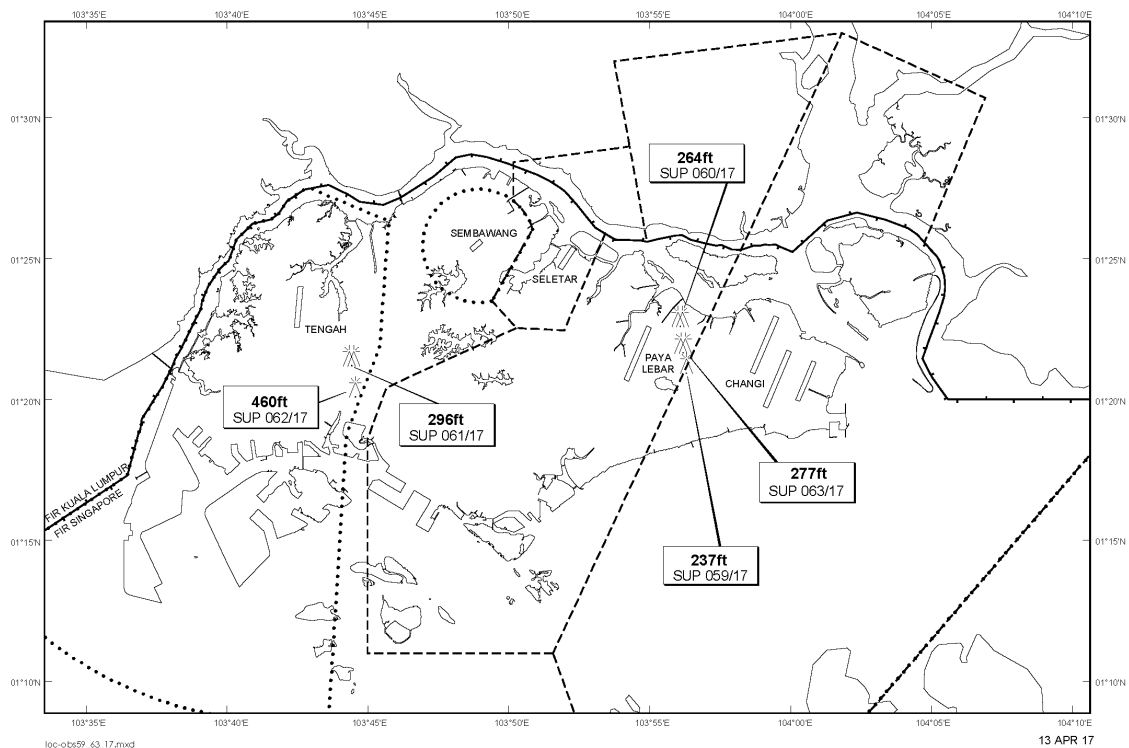
Tel: (65) 6595 6051

AFS: WSSSYNYX

Fax: (65) 64410221

Email: caas_singaporeais@caas.gov.sgURL: www.caas.gov.sgURL: <https://fpl-1.caasaim.gov.sg>**AIP Supplement for
Singapore****AIP SUP
063/2017****Effective from 13 APR 2017****/ 15 APR 2019****Published on 13 APR 2017****PAYA LEBAR AIRPORT – TOPLESS CRANES AND LUFFER CRANE**

WIE/1904151559 five topless cranes and one luffer crane, height 277ft AMSL, erected at 012200N 1035611E (bearing 71.8 degrees, distance 2.1nm from Paya Lebar ARP - within Paya Lebar CTR). Topless cranes and luffer crane marked and lighted at night. (NOTAM A1055/17 dated 07/04/17 is hereby superseded.)

LOCATION OF OBSTACLES

PAGE INTENTIONALLY LEFT BLANK