

Contact

Post:

REPUBLIC OF SINGAPORE
AERONAUTICAL
INFORMATION SERVICES
CIVIL AVIATION AUTHORITY
OF SINGAPORE
SINGAPORE CHANGI
AIRPORT
P.O. BOX 1, SINGAPORE
918141

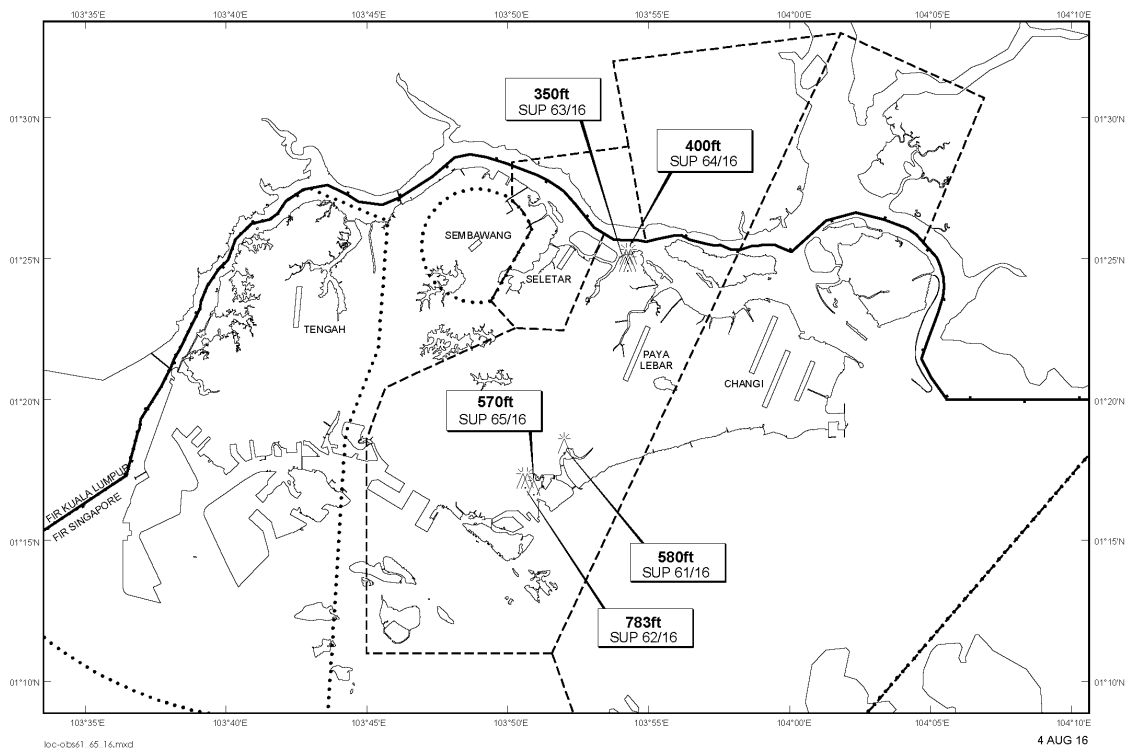
Tel: (65) 6595 6051

AFS: WSSSYNYX

Fax: (65) 64410221

Email: caas_singaporeais@caas.gov.sgURL: www.caas.gov.sgURL: <https://fpl-1.caasaim.gov.sg>**AIP Supplement for
Singapore****AIP SUP
065/2016****Effective from 04 AUG 2016****/ 31 DEC 2018****Published on 04 AUG 2016****PAYA LEBAR AIRPORT – LUFFER CRANE**

WIE/1812311559 one luffer crane, height 570ft AMSL, erected at 011658N 1035055E (bearing 216.7 degrees, distance 5.5nm from Paya Lebar ARP - within Paya Lebar CTR). Luffer crane marked and lighted at night. (NOTAM A1757/16 dated 25/7/16 is hereby superseded.)

LOCATION OF OBSTACLES

PAGE INTENTIONALLY LEFT BLANK