

Contact

Post:

REPUBLIC OF SINGAPORE
AERONAUTICAL
INFORMATION SERVICES
CIVIL AVIATION AUTHORITY
OF SINGAPORE
SINGAPORE CHANGI
AIRPORT
P.O. BOX 1, SINGAPORE
918141

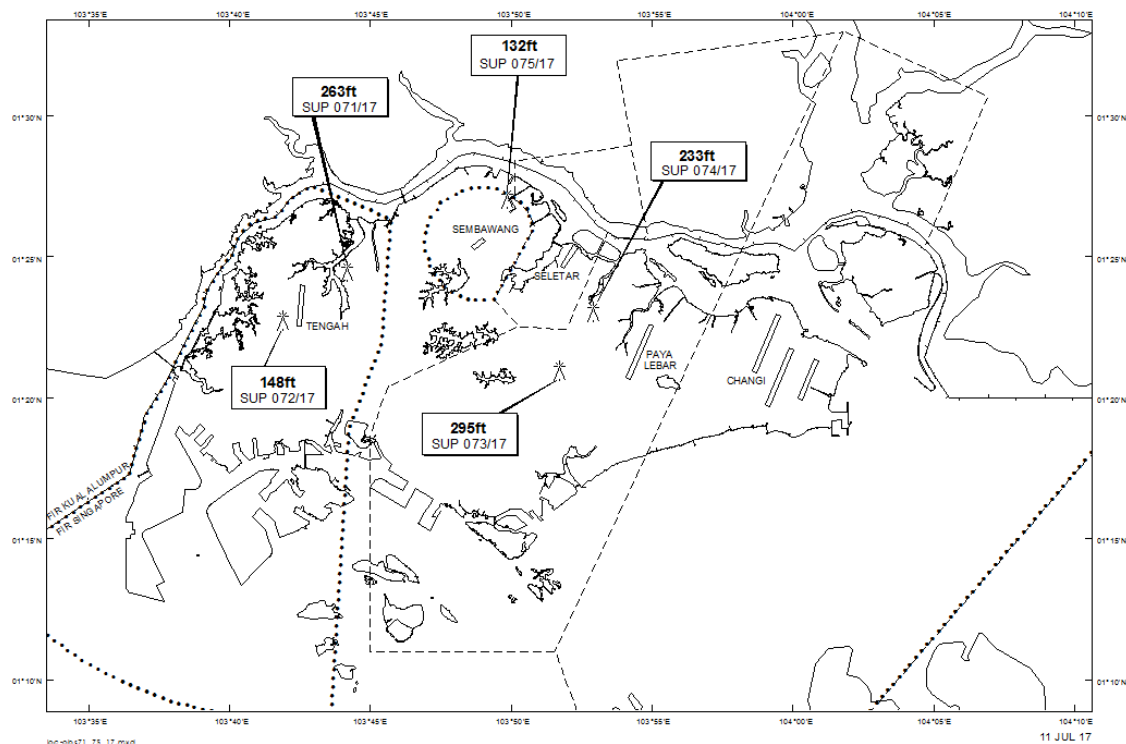
Tel: (65) 6595 6051

AFS: WSSSYNYX

Fax: (65) 64410221

Email: caas_singaporeais@caas.gov.sgURL: www.caas.gov.sgURL: <https://fpl-1.caasaim.gov.sg>**AIP Supplement for
Singapore****AIP SUP
071/2017****Effective from 11 JUL 2017****/ 02 OCT 2017****Published on 11 JUL 2017****TENGAH AERODROME – CRAWLER CRANE**

WIE/1710021559 one crawler crane, height 263ft AMSL, erected at 012430N 1034412E (bearing 56.1 degrees, distance 2.1nm from Tengah ARP - within Tengah Aerodrome Traffic Zone). Crawler crane marked and lighted at night. (NOTAM A1384/17 dated 10/05/17 is hereby superseded.)

LOCATION OF OBSTACLES

PAGE INTENTIONALLY LEFT BLANK