

Contact

Post:

REPUBLIC OF SINGAPORE
AERONAUTICAL
INFORMATION SERVICES
CIVIL AVIATION AUTHORITY
OF SINGAPORE
SINGAPORE CHANGI
AIRPORT
P.O. BOX 1, SINGAPORE
918141

Tel: (65) 6595 6051

AFS: WSSSYNYX

Fax: (65) 64410221

Email: caas_singaporeais@caas.gov.sgURL: www.caas.gov.sgURL: <https://fpl-1.caasaim.gov.sg>

AIP Supplement for Singapore



**AIP SUP
072/2016**

Effective from 04 AUG 2016

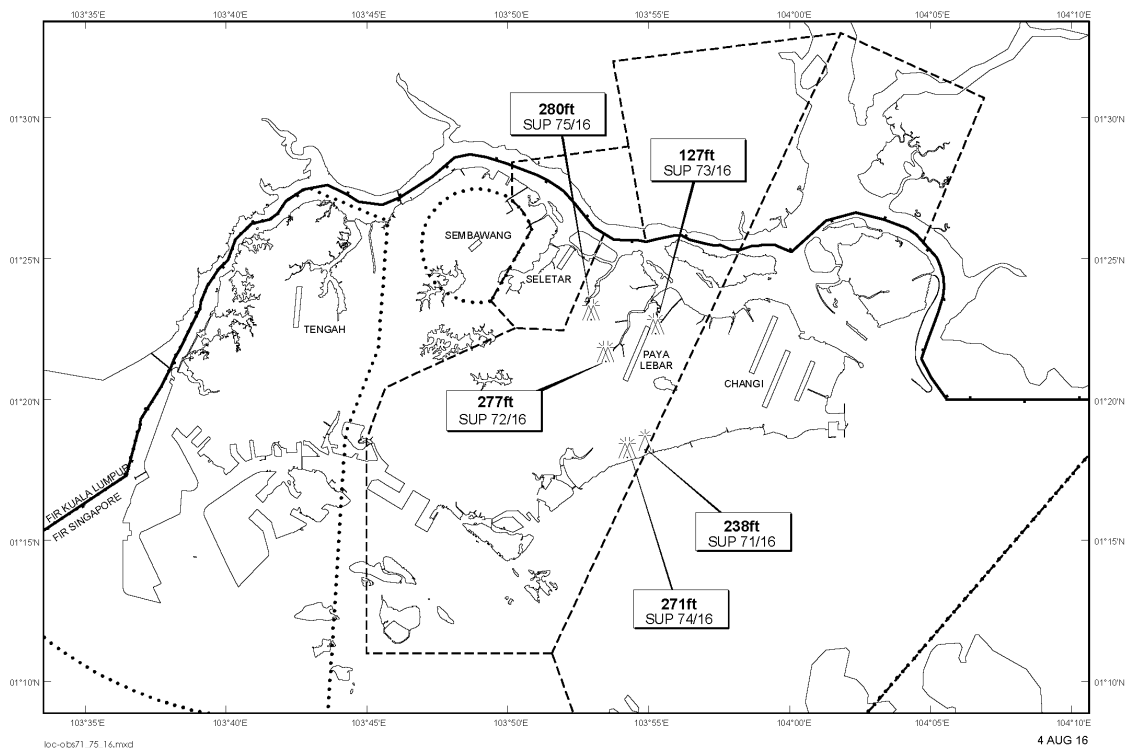
/ 10 MAR 2017

Published on 04 AUG 2016

PAYA LEBAR AIRPORT – SADDLE CRANES

WIE/1703101559 two saddle cranes, height 277ft AMSL, erected at 012142N 1035328E (bearing 298.4 degrees, distance 0.8nm from Paya Lebar ARP - within Paya Lebar CTR). Saddle cranes marked and lighted at night. (NOTAM A2256/15 dated 3/10/15 is hereby superseded.)

LOCATION OF OBSTACLES



PAGE INTENTIONALLY LEFT BLANK