

Contact

Post:

REPUBLIC OF SINGAPORE
AERONAUTICAL
INFORMATION SERVICES
CIVIL AVIATION AUTHORITY
OF SINGAPORE
SINGAPORE CHANGI
AIRPORT
P.O. BOX 1, SINGAPORE
918141

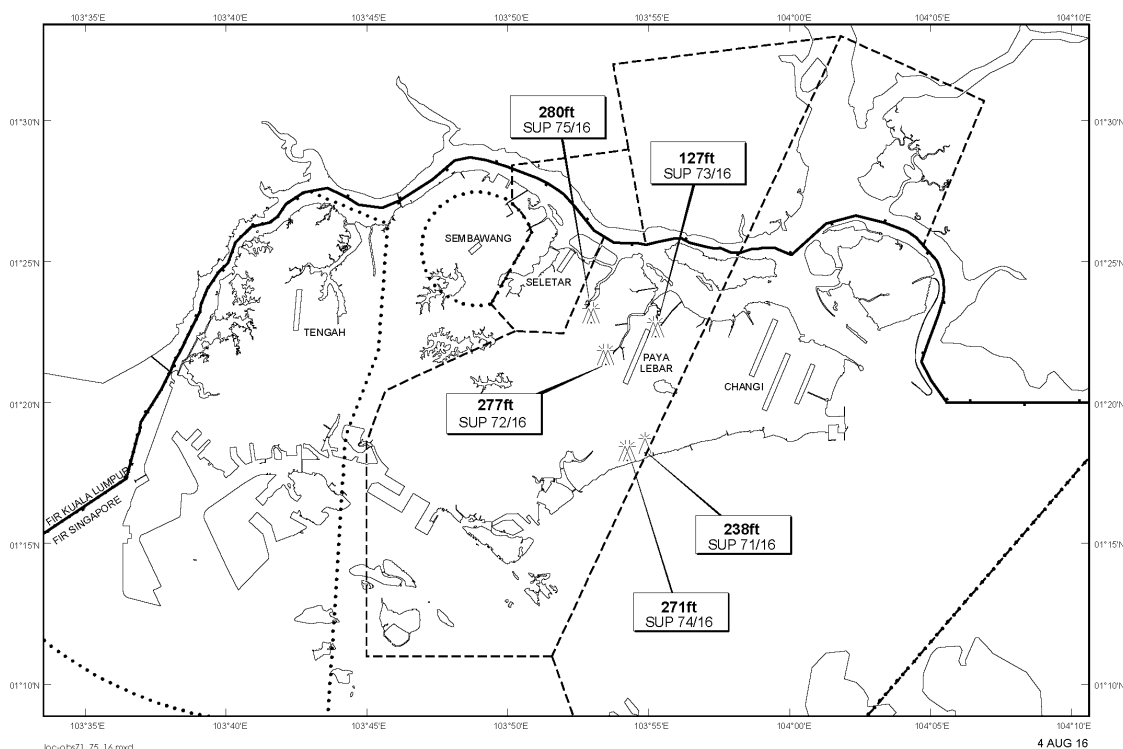
Tel: (65) 6595 6051

AFS: WSSSYNYX

Fax: (65) 64410221

Email: caas_singaporeais@caas.gov.sgURL: www.caas.gov.sgURL: <https://fpl-1.caasaim.gov.sg>**AIP Supplement for
Singapore****AIP SUP
073/2016****Effective from 04 AUG 2016****/ 22 MAY 2017****Published on 04 AUG 2016****PAYA LEBAR AIRPORT – CRAWLER CRANES**

WIE/1705221559 three crawler cranes, height 127ft AMSL, erected at 012241N 1035514E (bearing 38.6 degrees, distance 1.7nm from Paya Lebar ARP - within Paya Lebar CTR). Crawler cranes marked and lighted at night. (NOTAM A1145/16 dated 16/5/16 is hereby superseded.)

LOCATION OF OBSTACLES

PAGE INTENTIONALLY LEFT BLANK