

Contact

Post:

REPUBLIC OF SINGAPORE
AERONAUTICAL
INFORMATION SERVICES
CIVIL AVIATION AUTHORITY
OF SINGAPORE
SINGAPORE CHANGI
AIRPORT
P.O. BOX 1, SINGAPORE
918141

Tel: (65) 6595 6051

AFS: WSSSYNYX

Fax: (65) 64410221

Email: caas_singaporeais@caas.gov.sgURL: www.caas.gov.sgURL: <https://fpl-1.caasaim.gov.sg>

AIP Supplement for Singapore



**AIP SUP
073/2017**

Effective from 11 JUL 2017

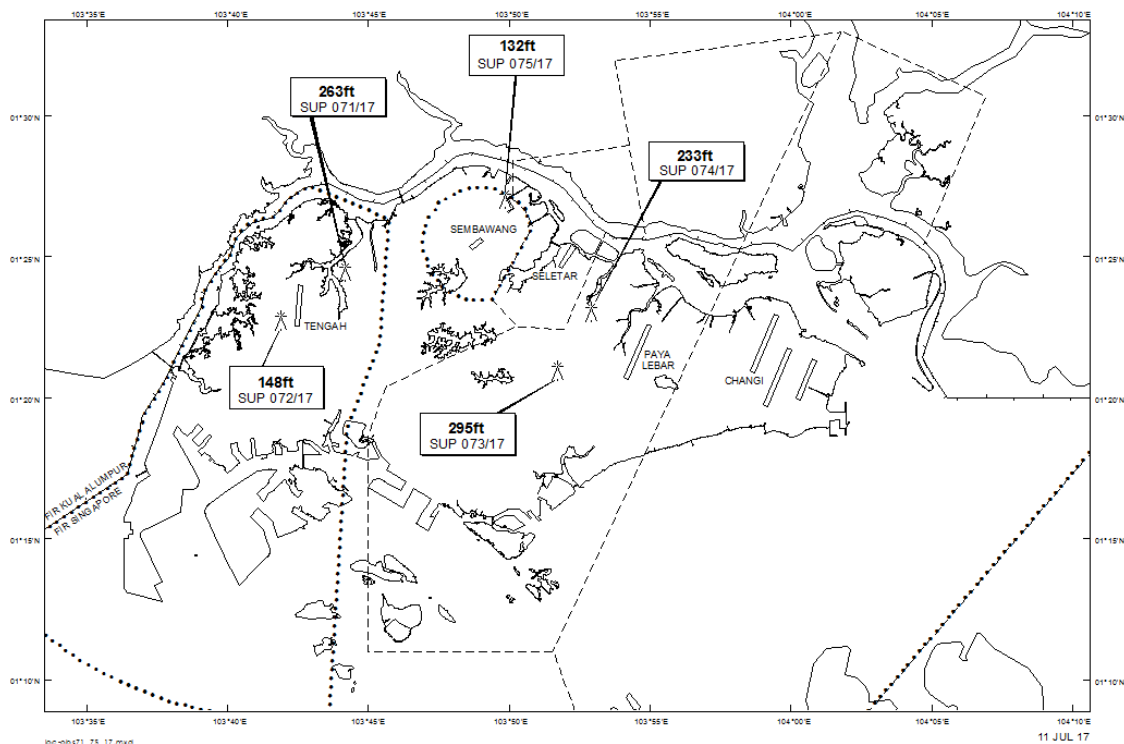
/ 01 DEC 2017

Published on 11 JUL 2017

PAYA LEBAR AIRPORT – CRAWLER CRANE

WIE/1712011559 one crawler crane, height 295ft AMSL, erected at 012058N 1035143E (bearing 261.2 degrees, distance 2.5nm from Paya Lebar ARP - within Paya Lebar Control Zone). Crawler crane marked and lighted at night. (NOTAM A1625/17 dated 31/05/17 is hereby superseded.)

LOCATION OF OBSTACLES



PAGE INTENTIONALLY LEFT BLANK