

**Contact**

Post:

REPUBLIC OF SINGAPORE  
AERONAUTICAL  
INFORMATION SERVICES  
CIVIL AVIATION AUTHORITY  
OF SINGAPORE  
SINGAPORE CHANGI  
AIRPORT  
P.O. BOX 1, SINGAPORE  
918141

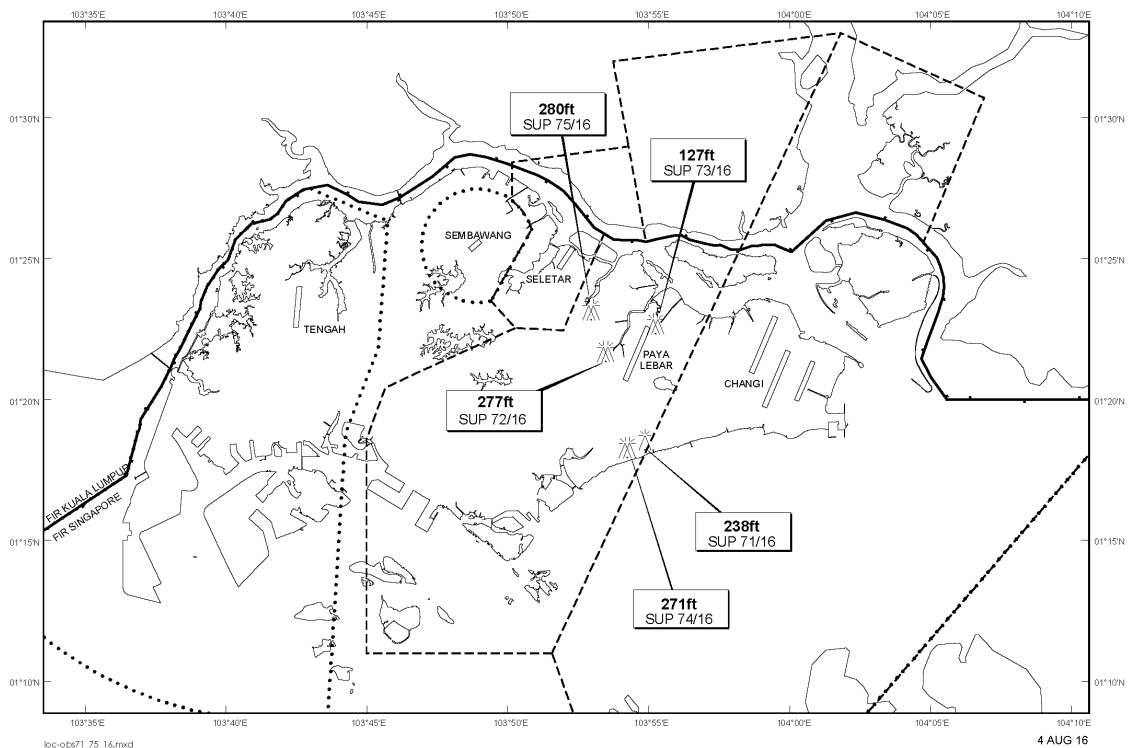
Tel: (65) 6595 6051

AFS: WSSSYNYX

Fax: (65) 64410221

Email: [caas\\_singaporeais@caas.gov.sg](mailto:caas_singaporeais@caas.gov.sg)URL: [www.caas.gov.sg](http://www.caas.gov.sg)URL: <https://fpl-1.caasaim.gov.sg>**AIP Supplement for  
Singapore****AIP SUP  
074/2016****Effective from 04 AUG 2016****/ 04 JUL 2017****Published on 04 AUG 2016****PAYA LEBAR AIRPORT – LUFFER CRANES**

WIE/1707041559 two luffer cranes, height 271ft AMSL, erected at 011818N 1035414E (bearing 178.8 degrees, distance 3nm from Paya Lebar ARP - within Paya Lebar CTR). Luffer cranes marked and lighted at night. (NOTAM A2902/15 dated 29/12/15 is hereby superseded.)

**LOCATION OF OBSTACLES**

*PAGE INTENTIONALLY LEFT BLANK*