

Contact

Post:

REPUBLIC OF SINGAPORE
AERONAUTICAL
INFORMATION SERVICES
CIVIL AVIATION AUTHORITY
OF SINGAPORE
SINGAPORE CHANGI
AIRPORT
P.O. BOX 1, SINGAPORE
918141

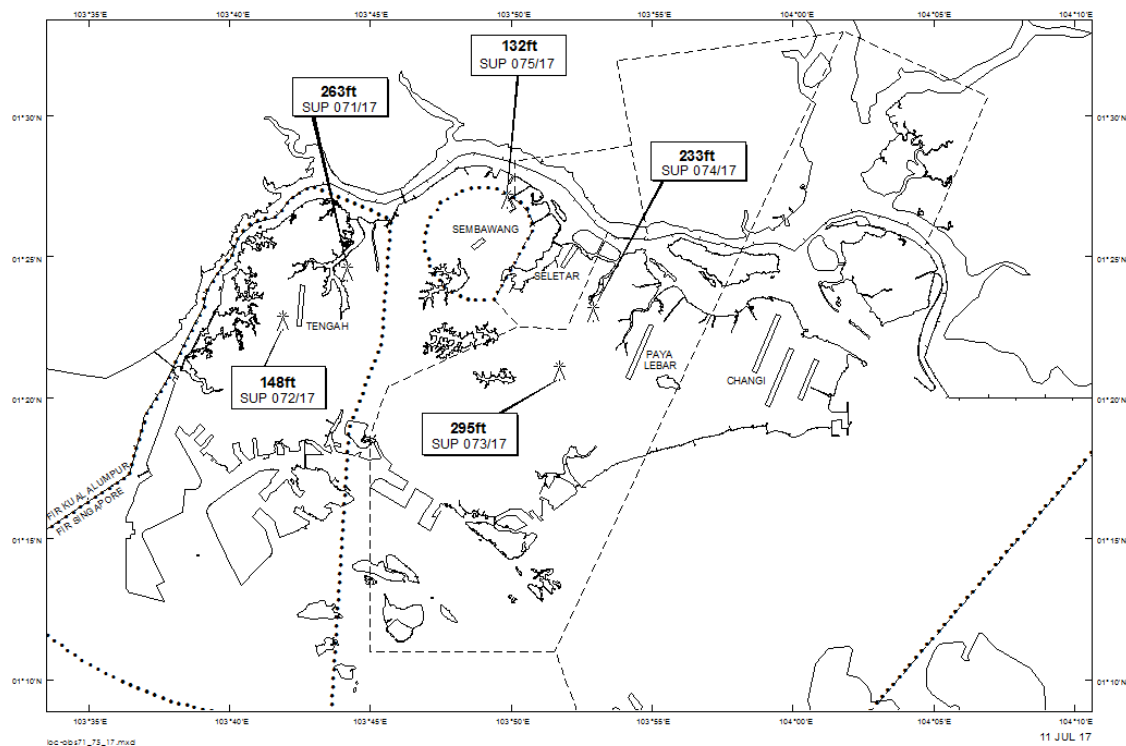
Tel: (65) 6595 6051

AFS: WSSSYNYX

Fax: (65) 64410221

Email: caas_singaporeais@caas.gov.sgURL: www.caas.gov.sgURL: <https://fpl-1.caasaim.gov.sg>**AIP Supplement for
Singapore****AIP SUP
075/2017****Effective from 11 JUL 2017****/ 17 APR 2018****Published on 11 JUL 2017****SEMBAWANG AERODROME – CRAWLER CRANE**

WIE/1804171559 one crawler crane, height 132ft AMSL, erected at 012704N 1034952E (bearing 32 degrees, distance 1.7nm from Sembawang ARP - within Sembawang Aerodrome Traffic Zone). Crawler crane marked and lighted at night. (NOTAM A1135/17 dated 17/04/17 is hereby superseded.)

LOCATION OF OBSTACLES

PAGE INTENTIONALLY LEFT BLANK