

Contact

Post:

REPUBLIC OF SINGAPORE
AERONAUTICAL
INFORMATION SERVICES
CIVIL AVIATION AUTHORITY
OF SINGAPORE
SINGAPORE CHANGI
AIRPORT
P.O. BOX 1, SINGAPORE
918141

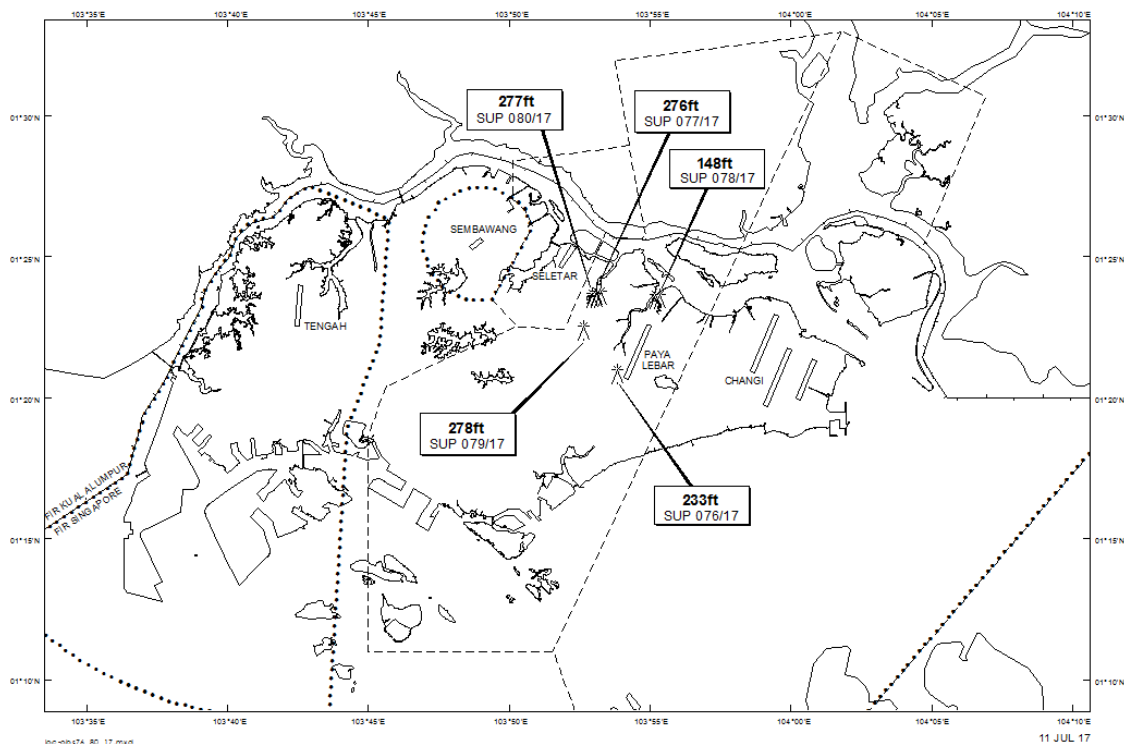
Tel: (65) 6595 6051

AFS: WSSSYNYX

Fax: (65) 64410221

Email: caas_singaporeais@caas.gov.sgURL: www.caas.gov.sgURL: <https://fpl-1.caasaim.gov.sg>**AIP Supplement for
Singapore****AIP SUP
076/2017****Effective from 11 JUL 2017****/ 30 JUN 2018****Published on 11 JUL 2017****PAYA LEBAR AIRPORT – CRAWLER CRANE**

WIE/1806301559 one crawler crane, height 233ft AMSL, erected at 012050N 1035351E (bearing 211.9 degrees, distance 0.6nm from Paya Lebar ARP - within Paya Lebar Control Zone). Crawler crane marked and lighted at night. (NOTAM A1924/17 dated 23/06/17 is hereby superseded.)

LOCATION OF OBSTACLES

PAGE INTENTIONALLY LEFT BLANK