

Contact

Post:

REPUBLIC OF SINGAPORE
AERONAUTICAL
INFORMATION SERVICES
CIVIL AVIATION AUTHORITY
OF SINGAPORE
SINGAPORE CHANGI
AIRPORT
P.O. BOX 1, SINGAPORE
918141

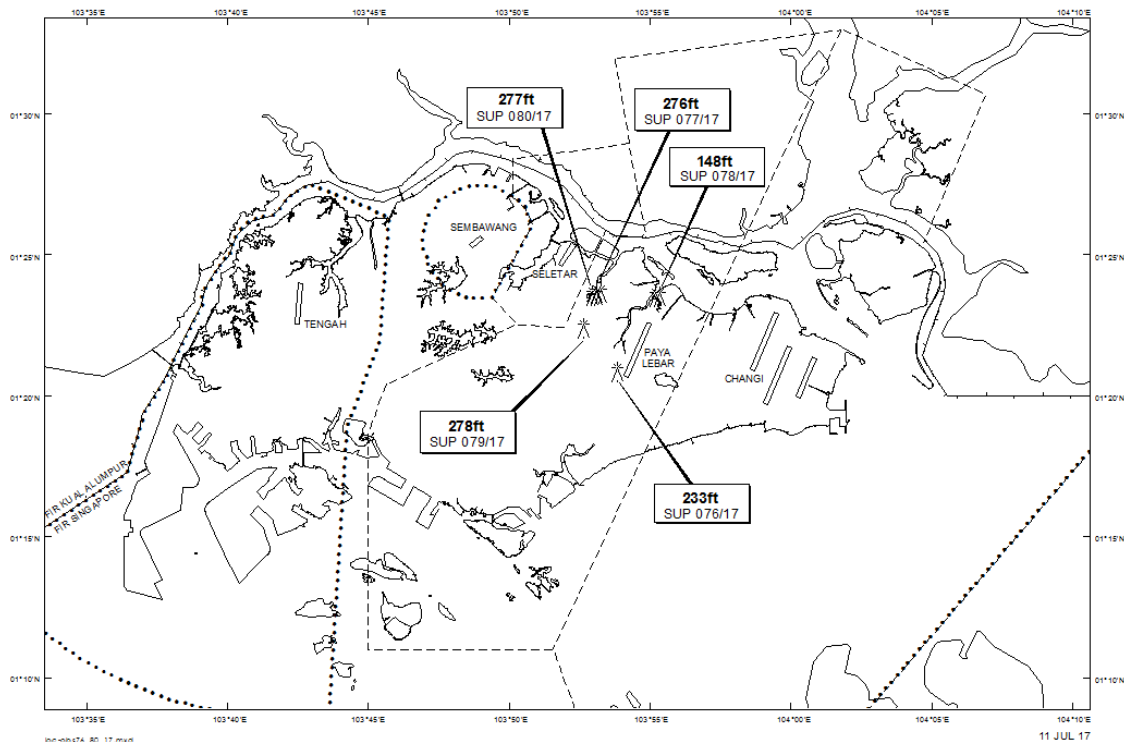
Tel: (65) 6595 6051

AFS: WSSSYNYX

Fax: (65) 64410221

Email: caas_singaporeais@caas.gov.sgURL: www.caas.gov.sgURL: <https://fpl-1.caasaim.gov.sg>**AIP Supplement for
Singapore****AIP SUP
077/2017****Effective from 11 JUL 2017****/ 31 AUG 2018****Published on 11 JUL 2017****PAYA LEBAR AIRPORT – LUFFER CRANES AND TOPLESS CRANES**

WIE/1808311559 two luffer cranes and four topless cranes, height 276ft AMSL, erected at 012338N 1035312E (bearing 337.0 degrees, distance 2.5nm from Paya Lebar ARP - within Paya Lebar Control Zone). Luffer cranes and topless cranes marked and lighted at night. (NOTAM A1624/17 dated 31/05/17 is hereby superseded.)

LOCATION OF OBSTACLES

PAGE INTENTIONALLY LEFT BLANK