

**Contact**

Post:

REPUBLIC OF SINGAPORE  
AERONAUTICAL  
INFORMATION SERVICES  
CIVIL AVIATION AUTHORITY  
OF SINGAPORE  
SINGAPORE CHANGI  
AIRPORT  
P.O. BOX 1, SINGAPORE  
918141

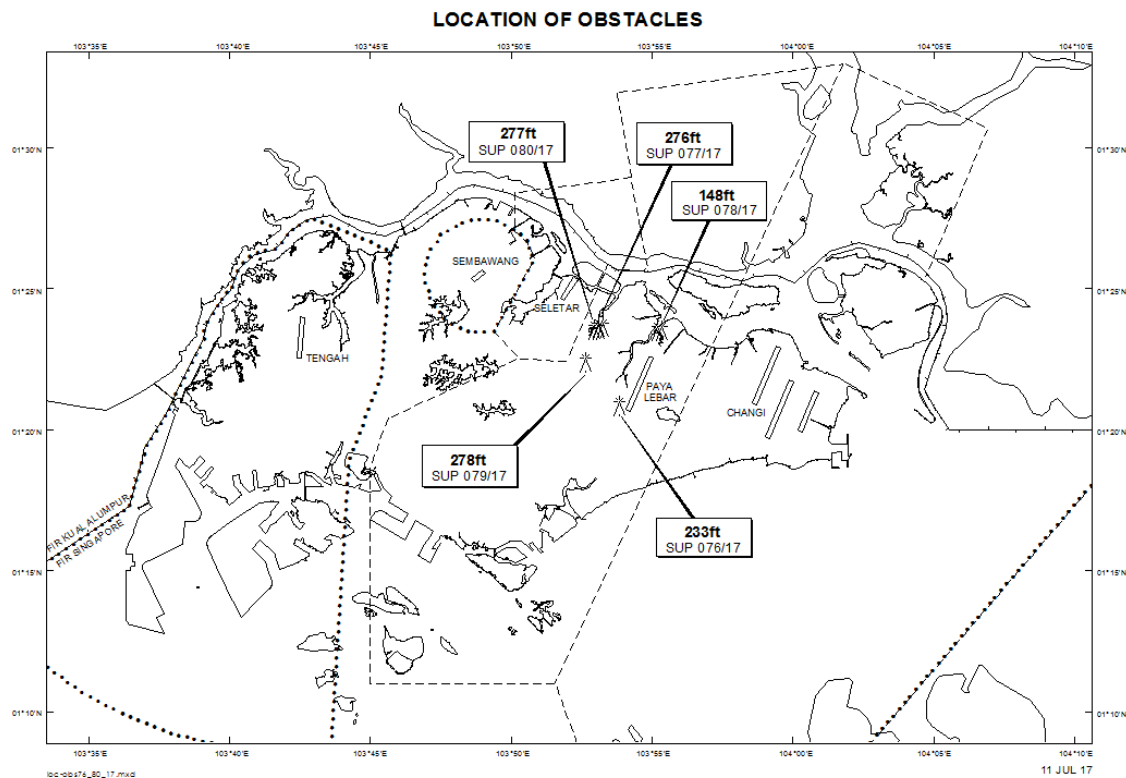
Tel: (65) 6595 6051

AFS: WSSSYNYX

Fax: (65) 64410221

Email: [caas\\_singaporeais@caas.gov.sg](mailto:caas_singaporeais@caas.gov.sg)URL: [www.caas.gov.sg](http://www.caas.gov.sg)URL: <https://fpl-1.caasaim.gov.sg>**AIP Supplement for  
Singapore****AIP SUP  
078/2017****Effective from 11 JUL 2017****/ 30 NOV 2018****Published on 11 JUL 2017****PAYA LEBAR AIRPORT – MOBILE CRANES AND CRAWLER CRANES**

WIE/1811301559 four mobile cranes and three crawler cranes, height 148ft AMSL, erected at 012331N 1035517E (bearing 27.1 degrees, distance 2.4nm from Paya Lebar ARP - within Paya Lebar Control Zone). Mobile cranes and crawler cranes marked and lighted at night. (NOTAM A1174/17 dated 19/04/17 is hereby superseded.)



*PAGE INTENTIONALLY LEFT BLANK*