

Contact

Post:

REPUBLIC OF SINGAPORE
AERONAUTICAL
INFORMATION SERVICES
CIVIL AVIATION AUTHORITY
OF SINGAPORE
SINGAPORE CHANGI
AIRPORT
P.O. BOX 1, SINGAPORE
918141

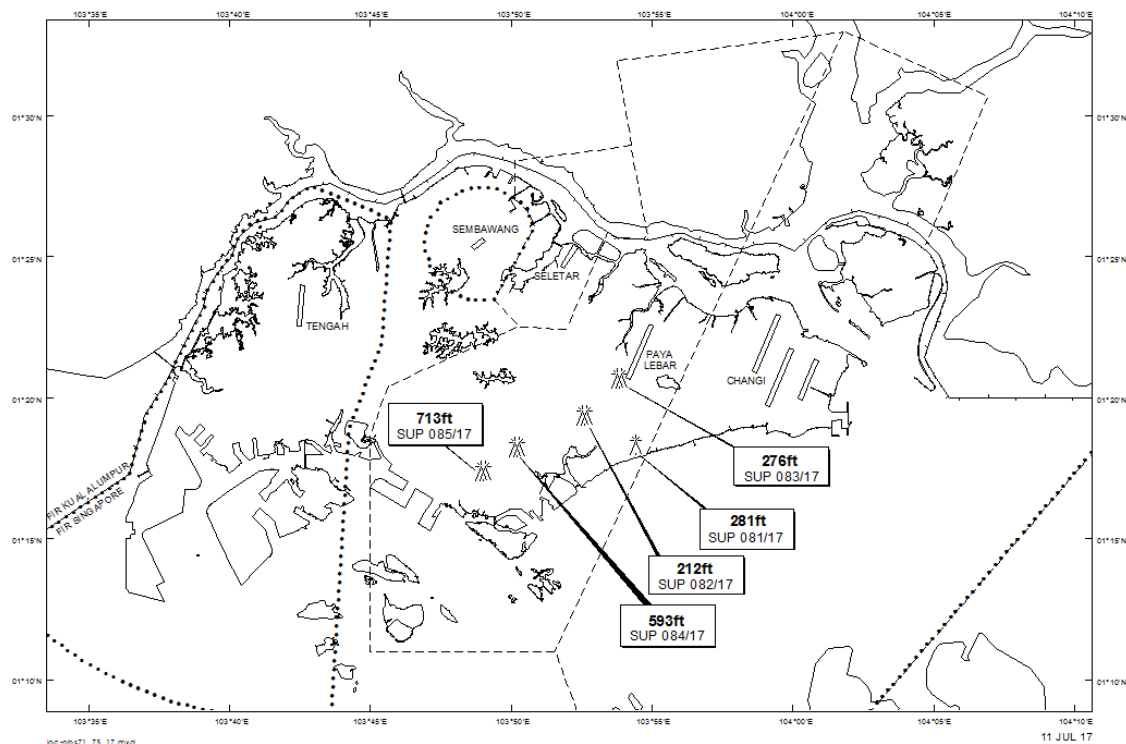
Tel: (65) 6595 6051

AFS: WSSSYNYX

Fax: (65) 64410221

Email: caas_singaporeais@caas.gov.sgURL: www.caas.gov.sgURL: <https://fpl-1.caasaim.gov.sg>**AIP Supplement for
Singapore****AIP SUP
081/2017****Effective from 11 JUL 2017****/ 01 MAY 2019****Published on 11 JUL 2017****PAYA LEBAR AIRPORT – LUFFER CRANE**

WIE/1905011559 one luffer crane, height 281ft AMSL, erected at 011820N 1035425E (bearing 175.4 degrees, distance 3nm from Paya Lebar ARP - within Paya Lebar Control Zone). Luffer crane marked and lighted at night. (NOTAM A1231/17 dated 24/04/17 is hereby superseded.)

LOCATION OF OBSTACLES

PAGE INTENTIONALLY LEFT BLANK