

**Contact**

Post:

REPUBLIC OF SINGAPORE  
AERONAUTICAL  
INFORMATION SERVICES  
CIVIL AVIATION AUTHORITY  
OF SINGAPORE  
SINGAPORE CHANGI  
AIRPORT  
P.O. BOX 1, SINGAPORE  
918141

Tel: (65) 6595 6051

AFS: WSSSYNYX

Fax: (65) 64410221

Email: [caas\\_singaporeais@caas.gov.sg](mailto:caas_singaporeais@caas.gov.sg)URL: [www.caas.gov.sg](http://www.caas.gov.sg)URL: <https://fpl-1.caasaim.gov.sg>

## AIP Supplement for Singapore



**AIP SUP**  
**084/2017**

Effective from 11 JUL 2017

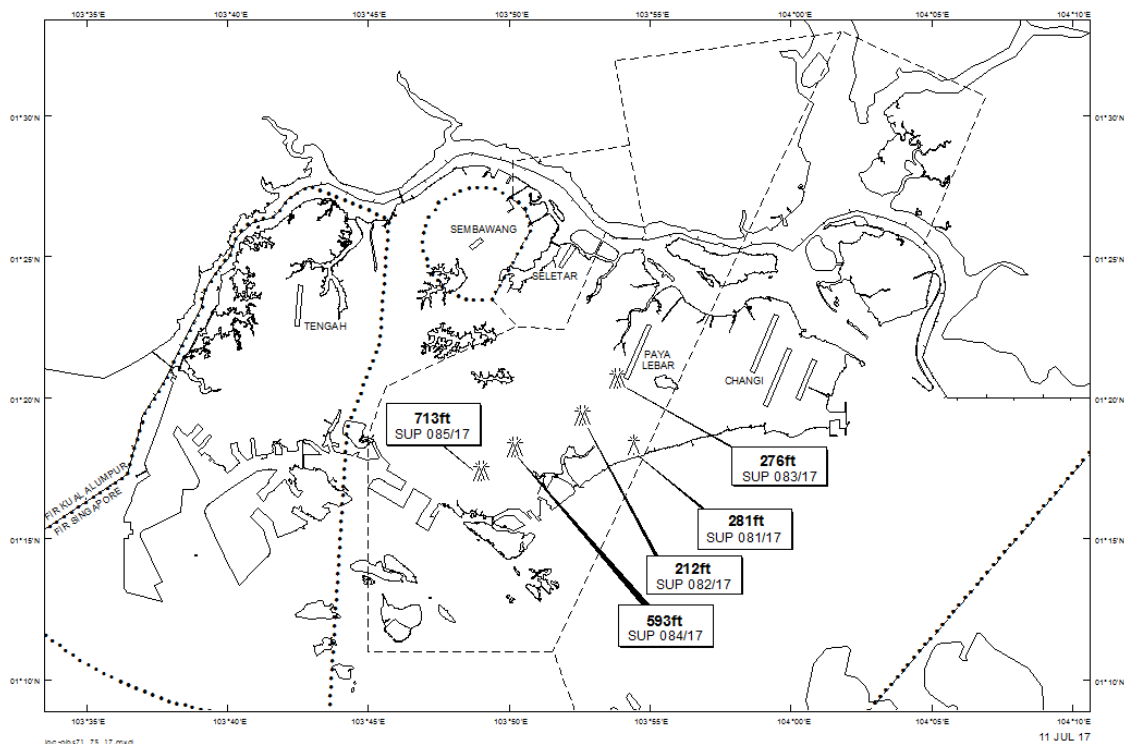
/ 31 DEC 2019

Published on 11 JUL 2017

### PAYA LEBAR AIRPORT – LUFFER CRANES

WIE/1912311559 two luffer cranes, height 593ft AMSL, erected at 011816N 1035013E (bearing 232.2 degrees, distance 5nm from Paya Lebar ARP - within Paya Lebar Control Zone). Luffer cranes marked and lighted at night. (NOTAM A1920/17 dated 23/06/17 is hereby superseded.)

#### LOCATION OF OBSTACLES



*PAGE INTENTIONALLY LEFT BLANK*