

**Contact**

Post:

REPUBLIC OF SINGAPORE  
AERONAUTICAL  
INFORMATION SERVICES  
CIVIL AVIATION AUTHORITY  
OF SINGAPORE  
SINGAPORE CHANGI  
AIRPORT  
P.O. BOX 1, SINGAPORE  
918141

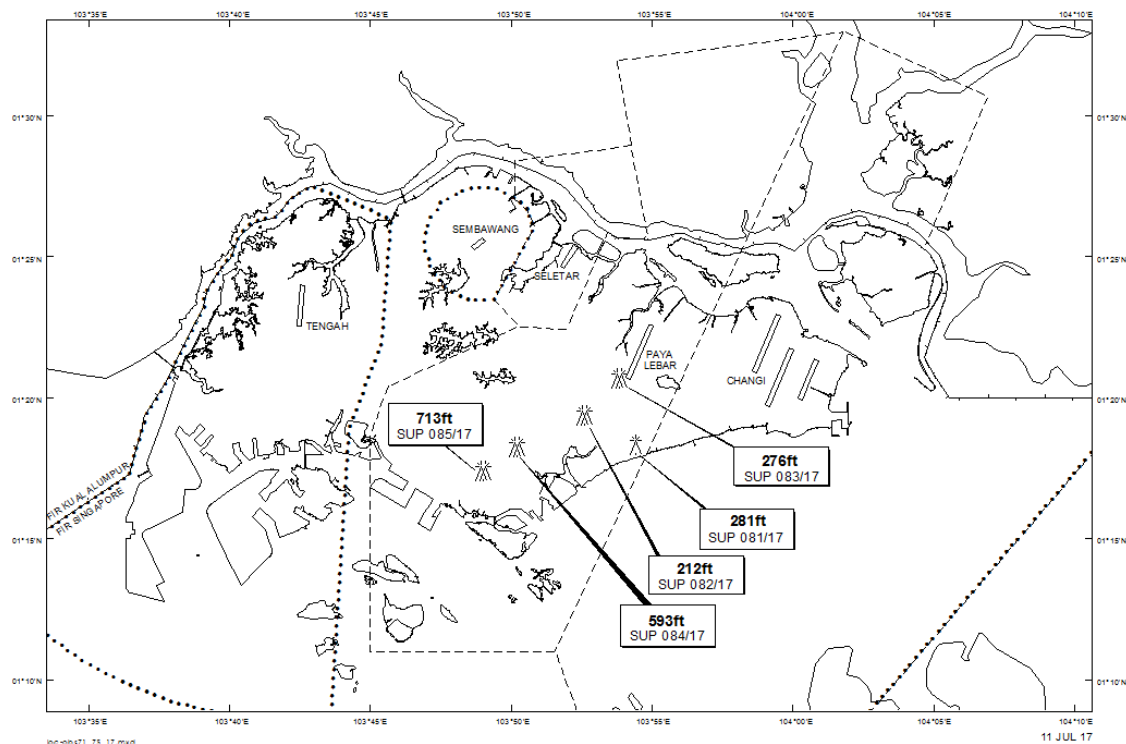
Tel: (65) 6595 6051

AFS: WSSSYNYX

Fax: (65) 64410221

Email: [caas\\_singaporeais@caas.gov.sg](mailto:caas_singaporeais@caas.gov.sg)URL: [www.caas.gov.sg](http://www.caas.gov.sg)URL: <https://fpl-1.caasaim.gov.sg>**AIP Supplement for  
Singapore****AIP SUP  
085/2017****Effective from 11 JUL 2017****/ 01 JUN 2020****Published on 11 JUL 2017****PAYA LEBAR AIRPORT – LUFFER CRANES**

WIE/2006011559 three luffer cranes, height 713ft AMSL, erected at 011724N 1034901E (bearing 232.5 degrees, distance 6.5nm from Paya Lebar ARP - within Paya Lebar Control Zone). Luffer cranes marked and lighted at night. (NOTAM A1674/17 dated 02/06/17 is hereby superseded.)

**LOCATION OF OBSTACLES**

*PAGE INTENTIONALLY LEFT BLANK*