

Contact

Post:

REPUBLIC OF SINGAPORE
AERONAUTICAL
INFORMATION SERVICES
CIVIL AVIATION AUTHORITY
OF SINGAPORE
SINGAPORE CHANGI
AIRPORT
P.O. BOX 1, SINGAPORE
918141

Tel: (65) 6595 6051

AFS: WSSSYNYX

Fax: (65) 64410221

Email: caas_singaporeais@caas.gov.sgURL: www.caas.gov.sgURL: <https://fpl-1.caasaim.gov.sg>

AIP Supplement for Singapore

**AIP SUP****088/2016****Effective from 24 OCT 2016****UFN****Published on 17 OCT 2016**

SINGAPORE CHANGI AIRPORT - REVISION TO AIRCRAFT STAND D42 AND OPENING OF NEW AIRCRAFT STANDS D42L AND D42R AT TERMINAL 1

1 INTRODUCTION

1.1 This AIP Supplement is to inform airline operators and pilots of revision to aircraft stand D42 and opening of new aircraft stands D42L and D42R to support the operations at Terminal 1 in Singapore Changi Airport with effect from 24 October 2016 0900UTC.

1.2 This AIP Supplement also describes the pushback procedures for aircraft departing from existing aircraft stand D42 and new aircraft stands D42L and D42R.

2 DETAILS OF AIRCRAFT STANDS D42, D42L AND D42R

2.1 Aircraft stands D42, D42L and D42R will be used for active / tow operations. Details are as follows:

Number	Aircraft stand		Aircraft types that can be parked at the aircraft stand
	Location (WGS-84 coordinates)	Elevation	
D42	N 01° 21' 42.77" E103° 59' 34.58"	5.15m (16.89ft)	A332, A333, A343, A359, B762, B763, B772, B773, B773ER, B788, B789 and MD83
D42L	N 01° 21' 42.00" E103° 59' 34.47"	5.12m (16.79ft)	A319, A320, A321 and B737
D42R	N 01° 21' 43.45" E103° 59' 34.33"	5.21m (17.09ft)	A319, A320, A321 and B737

2.2 Please see Appendices 1A and 1B for the location of aircraft stands D42, D42L and D42R.

3 PUSHBACK PROCEDURES FOR DEPARTING AIRCRAFT

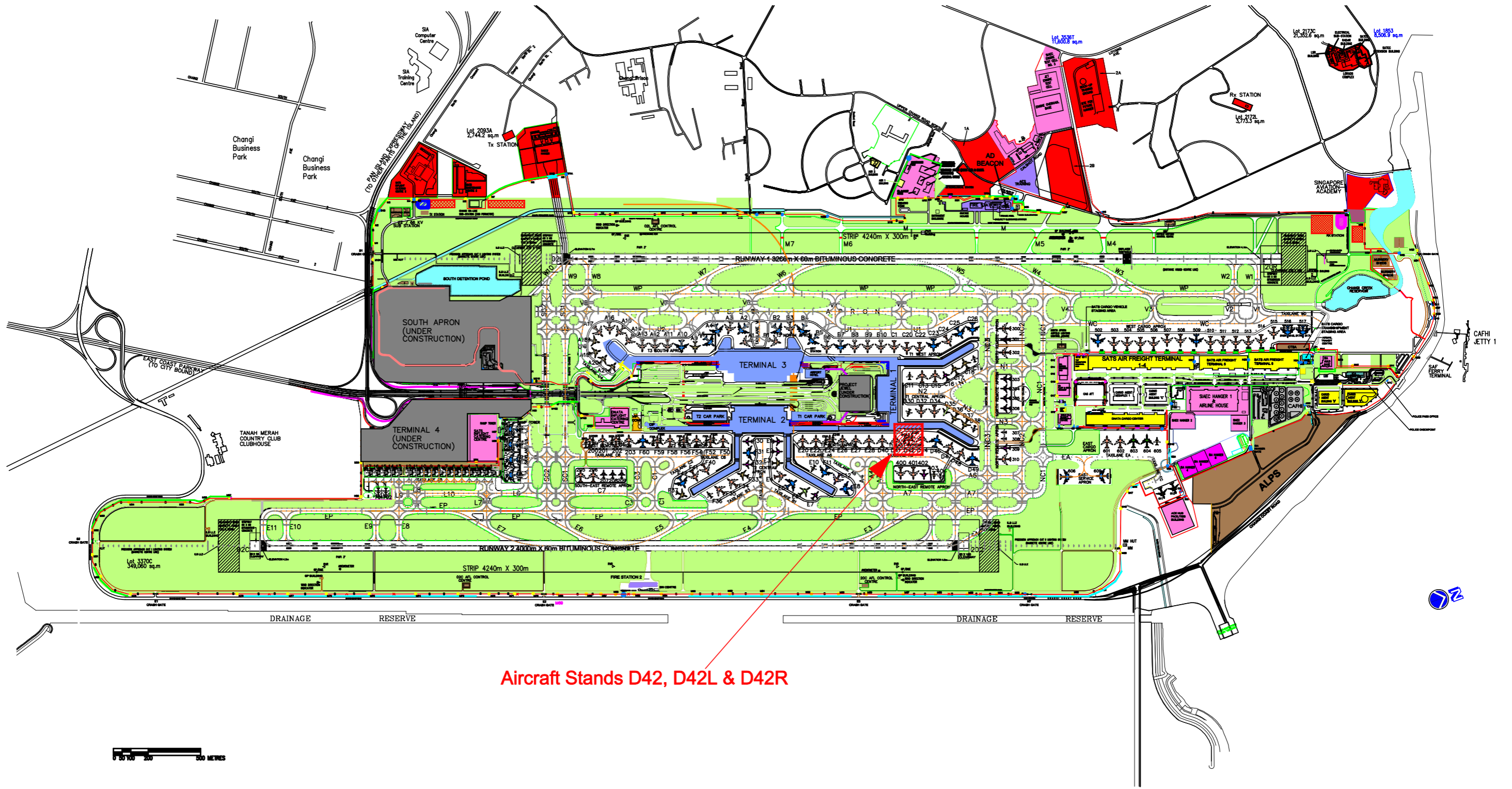
3.1 The pushback procedures for aircraft departing from aircraft stands D42, D42L and D42R are as follows:

Aircraft stand	Pushback Procedure	Phraseology used by Singapore Ground
D42	The aircraft (on idle thrust) shall be pushed back onto Taxilane A6 to face North (or South) until its nosewheel is at the intersection of the aircraft stand lead-in line and Taxilane A6 centreline. The aircraft may break away from there.	Pushback approved, to face North (or South) on Taxilane A6
D42L and D42R	The aircraft (on idle thrust) shall be pushed back following the pushback line onto Taxilane A6 to face North (or South) until its nosewheel is at the intersection of the aircraft stand pushback line and Taxilane A6 centreline. The aircraft may break away from there.	Pushback approved, to face North (or South) on Taxilane A6

4 CONCLUSION

4.1 Any change to the contents of this AIP Supplement will be notified through NOTAM.

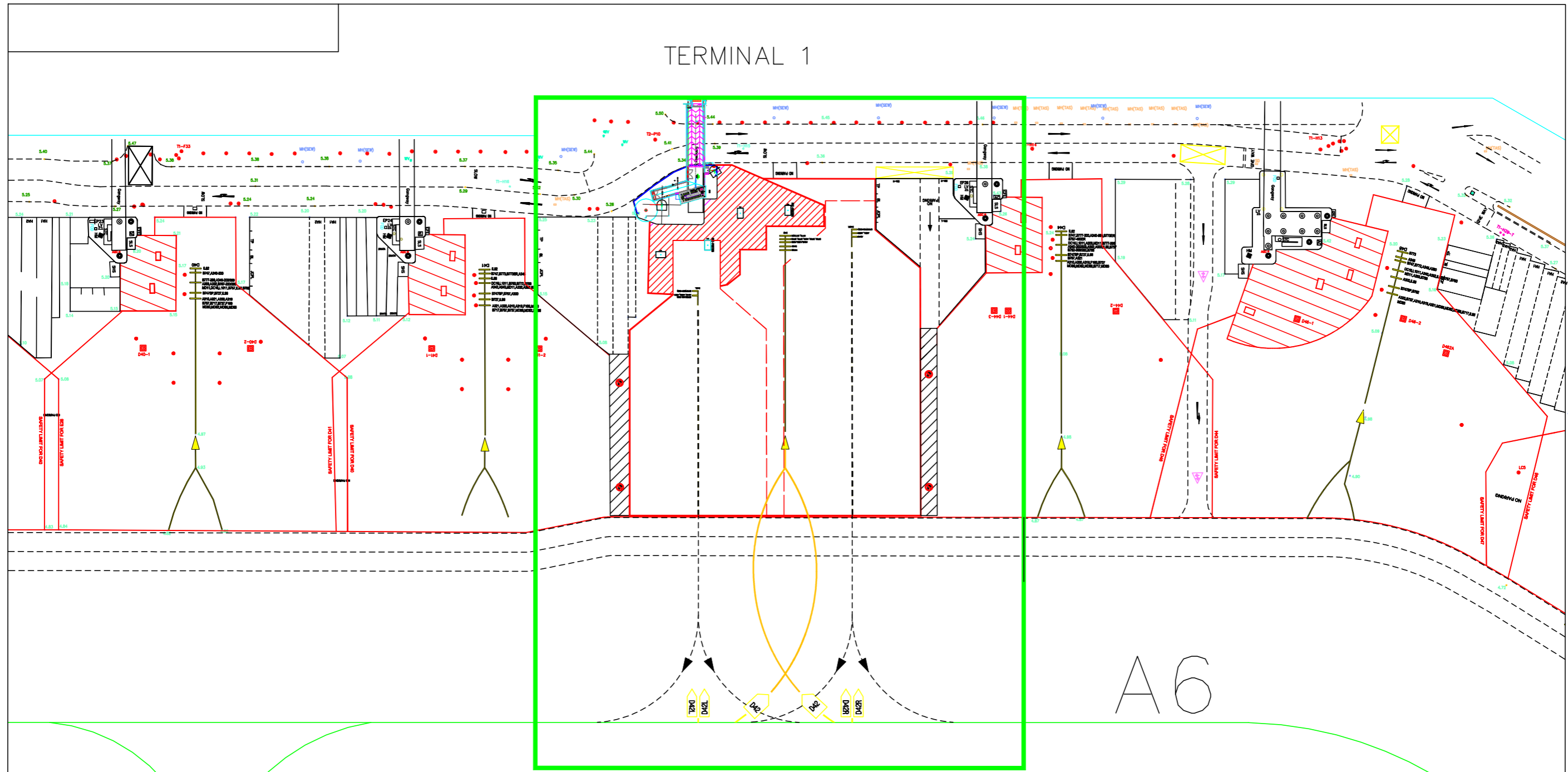
LOCATION PLAN OF AIRCRAFT STANDS D42, D42L AND D42R AT TERMINAL 1 IN SINGAPORE CHANGI AIRPORT WITH EFFECT FROM 24 OCTOBER 2016 0900 UTC



Aircraft Stands D42, D42L & D42R

PAGE INTENTIONALLY LEFT BLANK

ENLARGED LOCATION PLAN OF AIRCRAFT STANDS D42, D42L AND D42R AT TERMINAL 1 IN SINGAPORE CHANGI AIRPORT WITH EFFECT FROM 24 OCTOBER 2016 0900 UTC



D42, D42L & D42R

PAGE INTENTIONALLY LEFT BLANK