

Contact

Post:

REPUBLIC OF SINGAPORE
AERONAUTICAL
INFORMATION SERVICES
CIVIL AVIATION AUTHORITY
OF SINGAPORE
SINGAPORE CHANGI
AIRPORT
P.O. BOX 1, SINGAPORE
918141

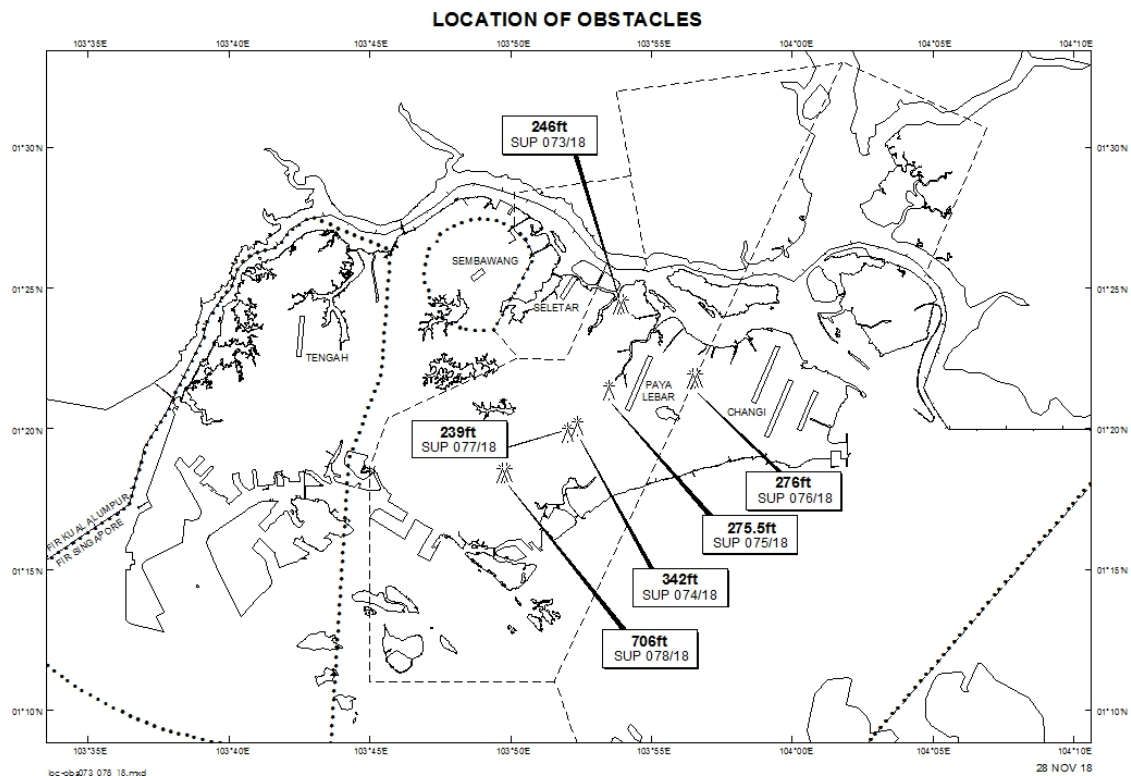
Tel: (65) 6595 6051

AFS: WSSSYNYX

Fax: (65) 64410221

Email: caas_singaporeais@caas.gov.sgURL: www.caas.gov.sgURL: <https://fpl-1.caasaim.gov.sg>**AIP Supplement for
Singapore****AIP SUP
073/2018****Effective from 28 NOV 2018****/ 30 JUN 2019****Published on 28 NOV 2018****PAYA LEBAR AIRPORT – OBSTACLES**

WIE/1906301559 twelve crawler cranes, two mobile cranes, eight boring rigs and two piling rigs, height 246ft AMSL, erected at 012425N 1035356E (bearing 355.7 degrees, distance 3.1 nm from Paya Lebar ARP - within Paya Lebar Control Zone). Obstacles marked and lighted at night. (NOTAM A4563/18 dated 19/11/18 is hereby superseded.)



PAGE INTENTIONALLY LEFT BLANK